

# CHARLES O. GEORGI COMPANY

2215 West County Road B

Saint Paul, Minnesota 55113

REGISTERED CIVIL ENGINEER AND LAND SURVEYOR

## Certificate of Survey

I Hereby Certify that this plat shows a survey made by me of the property described on this plat, and that the corners are correctly placed as shown, and that all locations have been correctly shown.

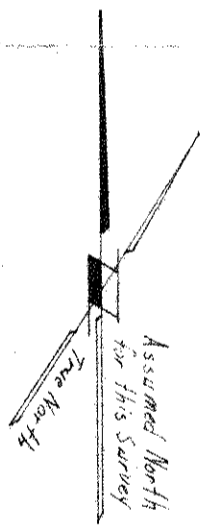
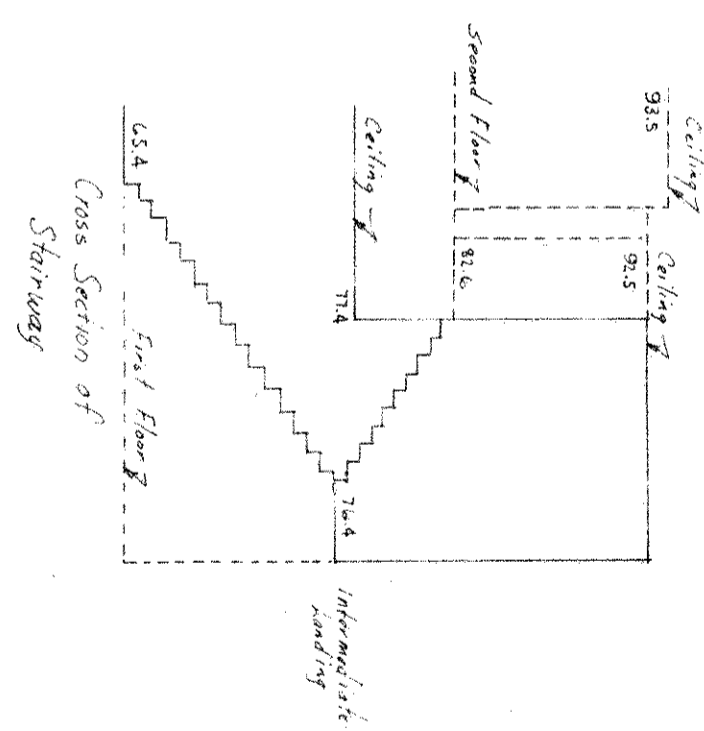
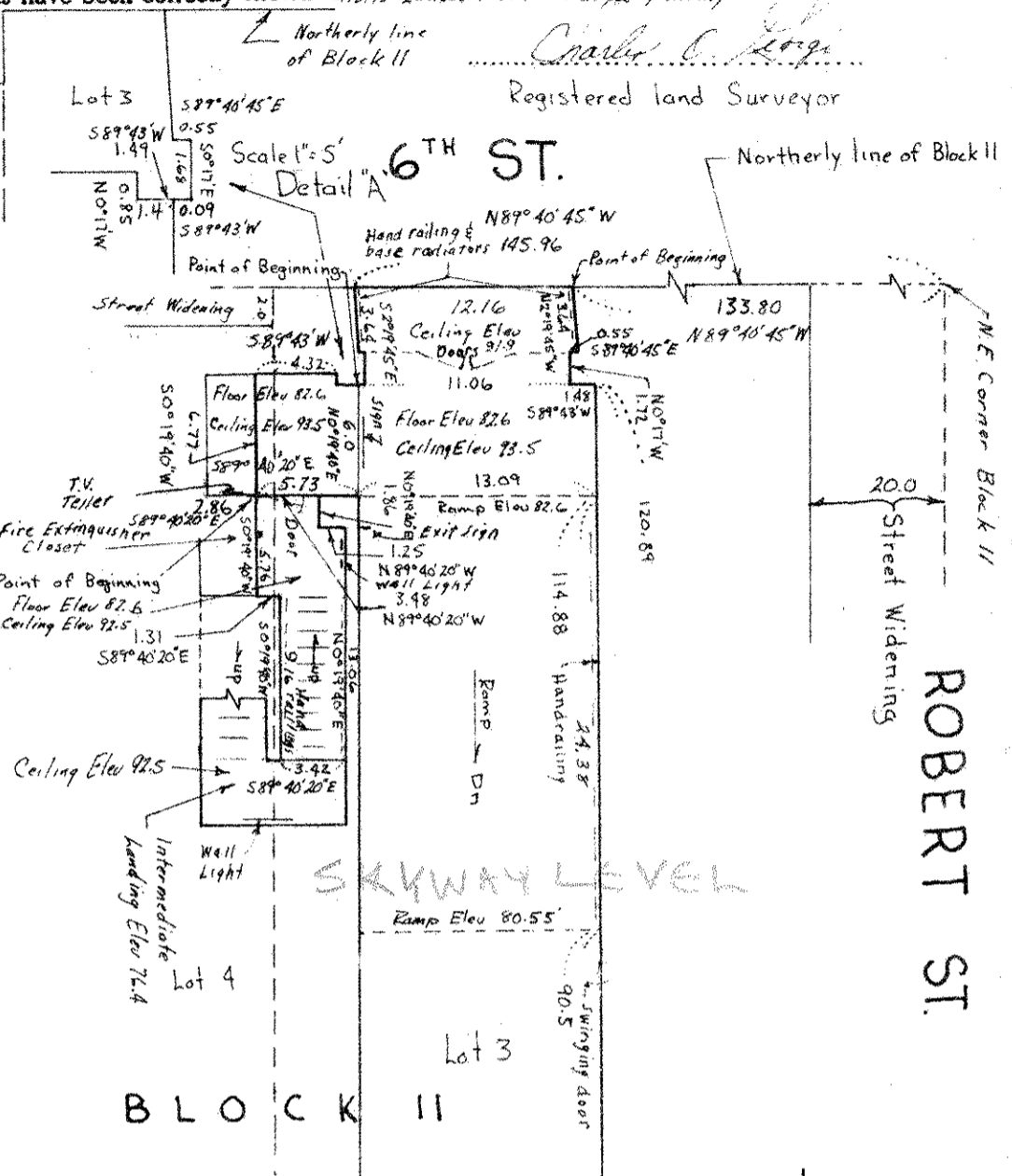
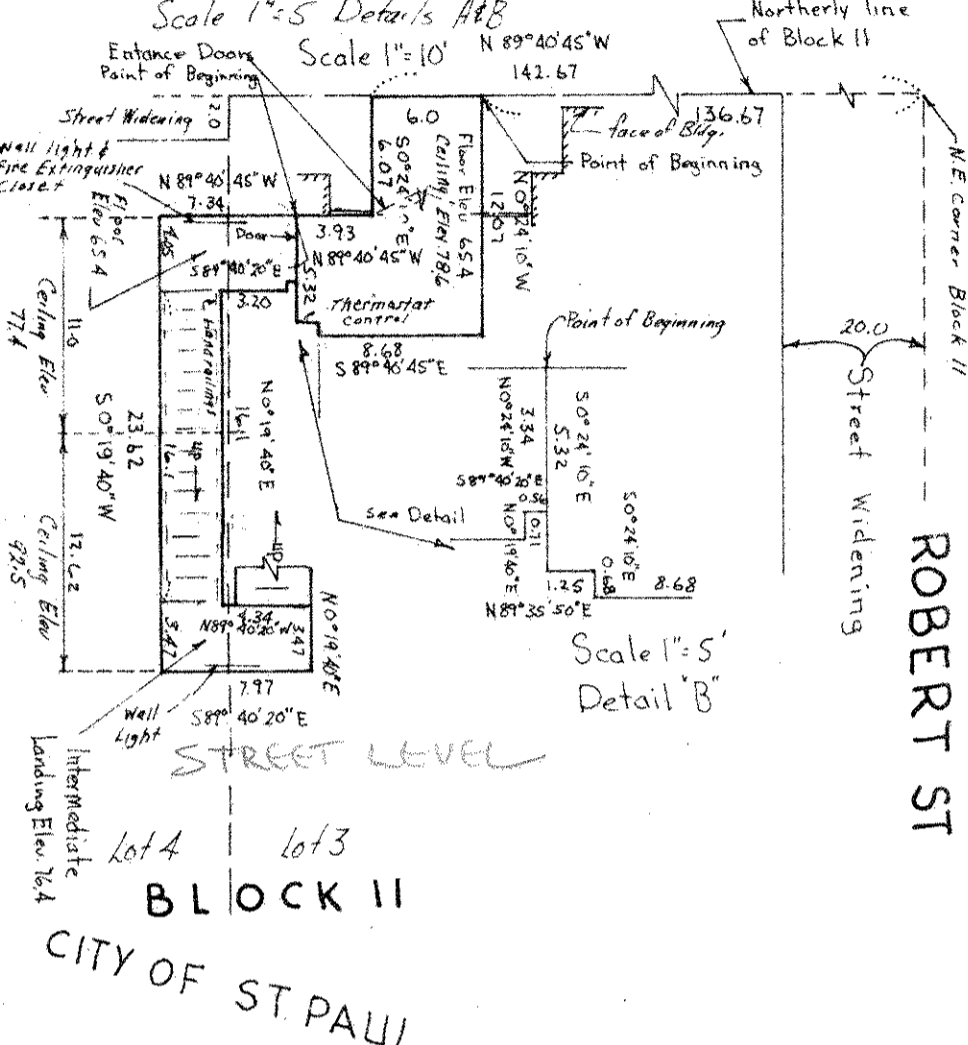
*Walkway and stairway location*

*11/17/75 Added encroachments and conditions. 3/18/75 Exclude T.V. Teller area & modify.*

*Charles O. Georgi*  
Registered Land Surveyor

Surveyed For *Housing Authority of American National Bank*  
Date *January 1975*

Scale 1"=10' **6<sup>TH</sup> ST**  
Scale 1"=5' Details A & B



BLOCK II

