

LOT 9 BLOCK 11.  
ST PAUL PROPER.

JOHN B. IRVINE, SURVEYOR.

408 GLOBE BLDG.

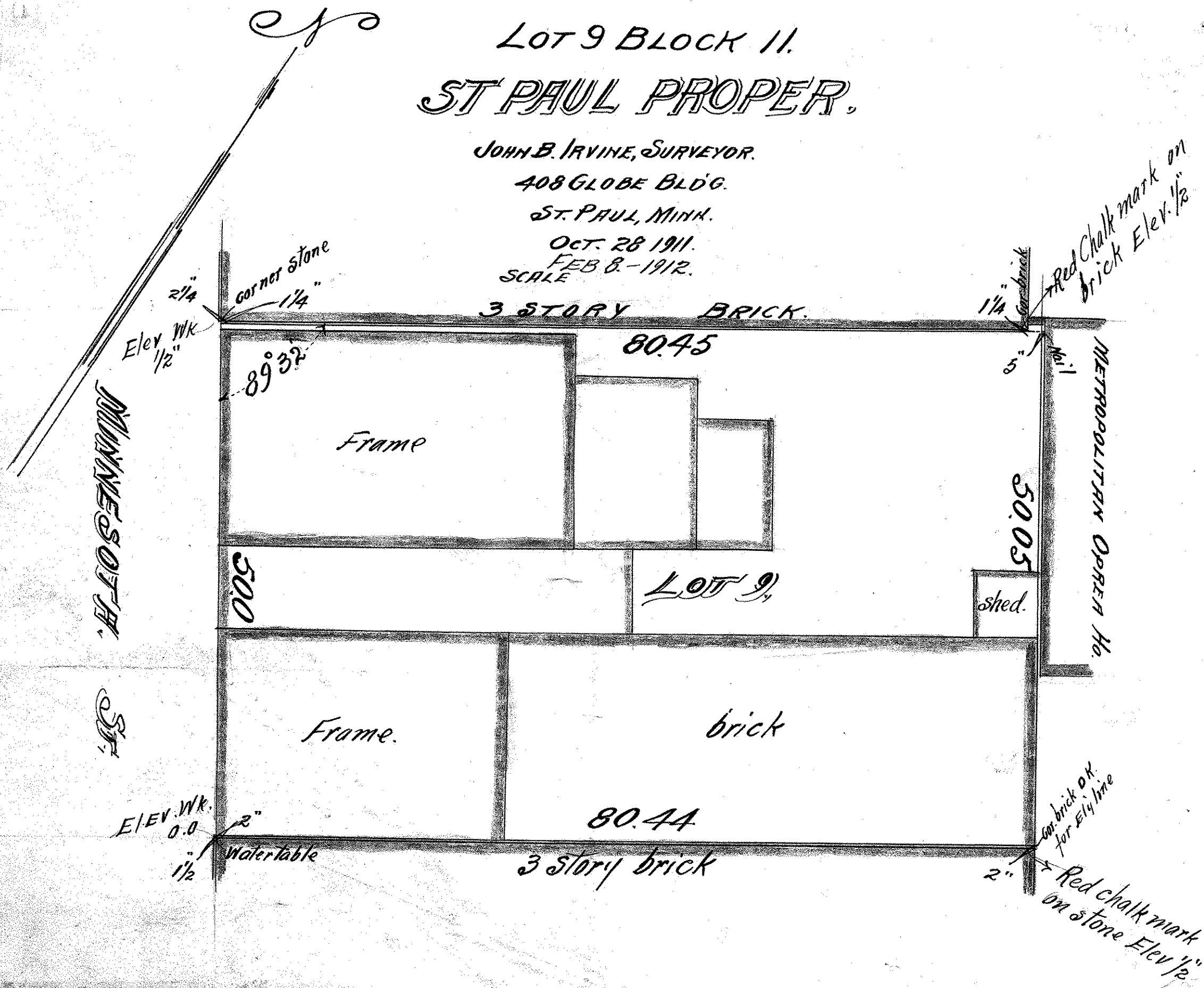
ST. PAUL, MINN.

OCT. 28 1911.

FEB 8 - 1912.

SCALE

3 STORY BRICK.



Red Chalk mark on brick Elev. 1/2"

Red chalk mark on stone Elev. 1/2"

Cor. brick OK for Ely line

1 1/4" Cor. brick

5" Nail

2 1/4"

Corner stone 1 1/4"

Elev. Wk. 1/2"

89° 32'

Frame

80.45

50.0

LOT 9

shed.

50.05

METROPOLITAN OPEN H.

Frame.

brick

80.44

3 story brick

Elev. Wk. 0.0

Water table 2"

1 1/2"

2"