

FROM THE OFFICE OF

CHARLES O. GEORGI COMPANY

2215 West County Road B

Saint Paul 8, Minnesota

MINNESOTA REGISTERED LAND SURVEYOR

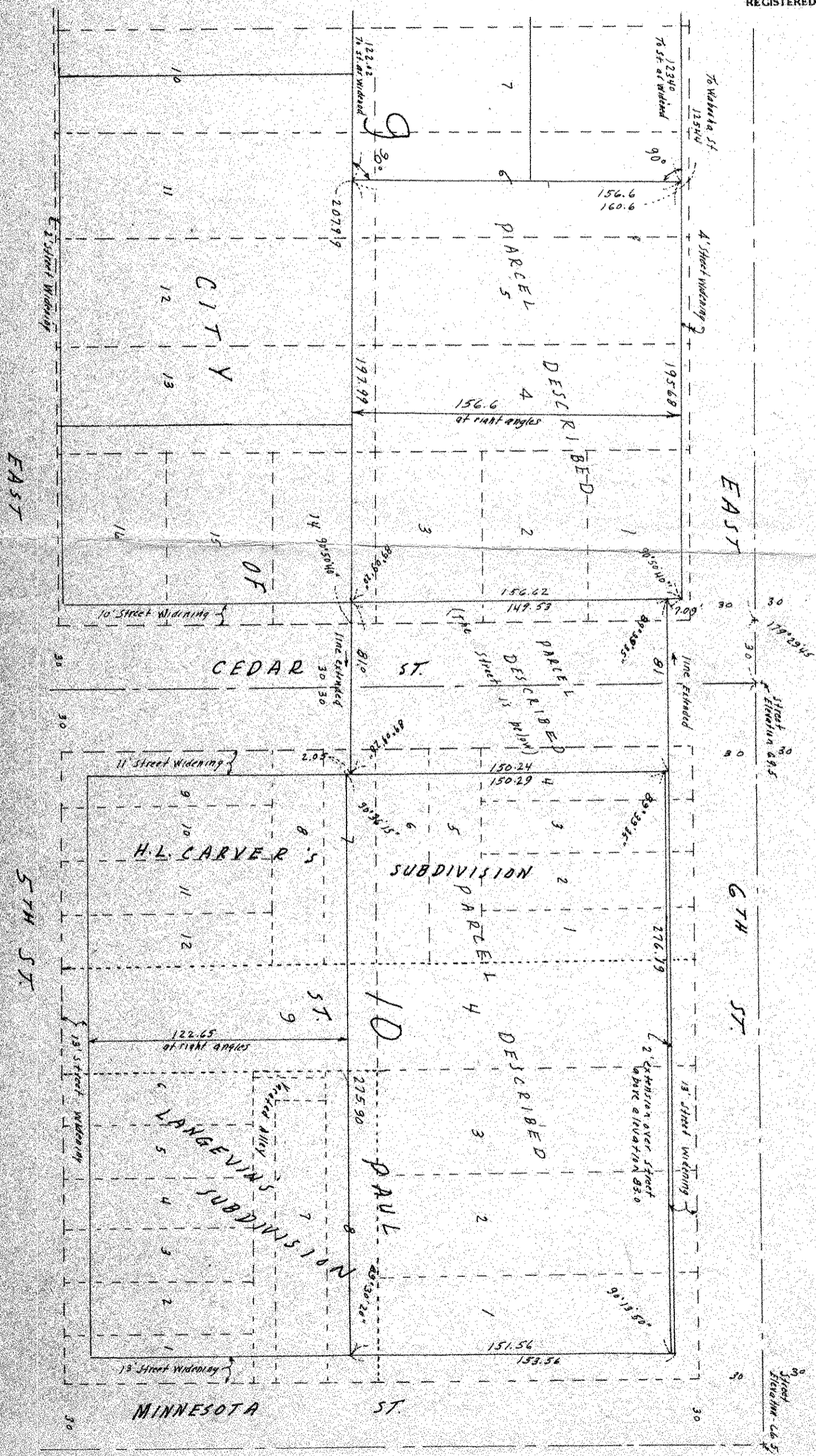


Certificate of Survey

I Herby Certify that this plat shows a survey made by me of the property described on this plat, and that the ~~corners~~ corners are correctly placed as shown, and that all locations, encroachments, etc., have been correctly shown.

Surveyed For NORTHERLY CENTRE CORPORATION
Date April, 1970
Scale 1" = 50'

By Charles O. Georgi
REGISTERED LAND SURVEYOR



Description: (as prepared and furnished to us)
See attached sheet

