

CHARLES O. GEORGI COMPANY

2215 West County Road B

Saint Paul, Minnesota 55113

REGISTERED CIVIL ENGINEER AND LAND SURVEYOR

Certificate of Survey

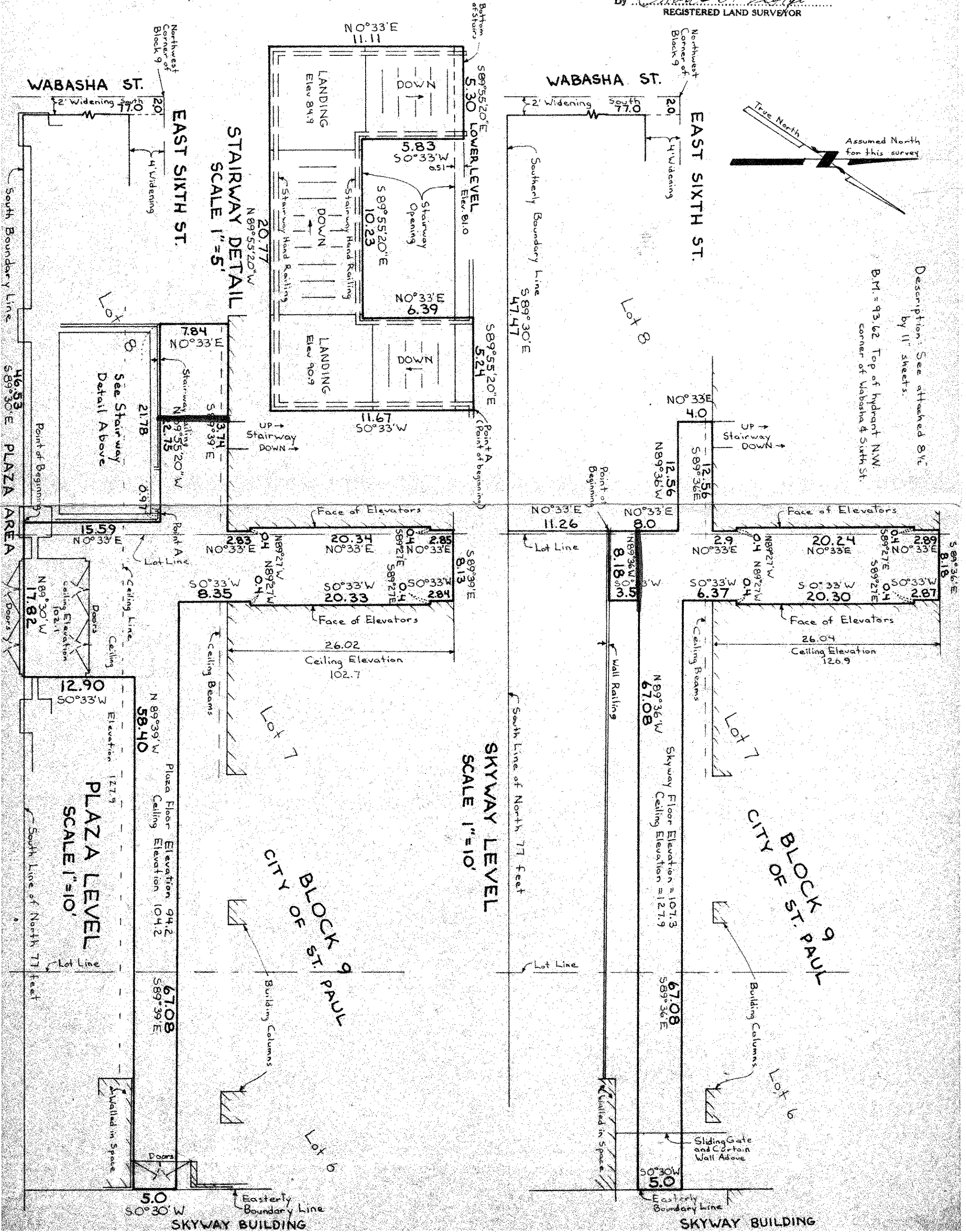
I Herby Certify that this plat shows a ^{walkway and stairway location} survey made by me of the property described on this plat, and that the corners are correctly placed as shown, and that all locations have been correctly shown.

Eugene A. Rancone

Surveyed For Northern Federal Building

Date January 1975

By *Charles O. Georgi*
REGISTERED LAND SURVEYOR



Description: See attached 8 1/2" by 11" sheets.
B.M. = 93.62 Top of hydrant N.W. corner of Wabasha & Sixth St.

SKYWAY LEVEL
SCALE 1"=10'

PLAZA LEVEL
SCALE 1"=10'

SKYWAY BUILDING

SKYWAY BUILDING