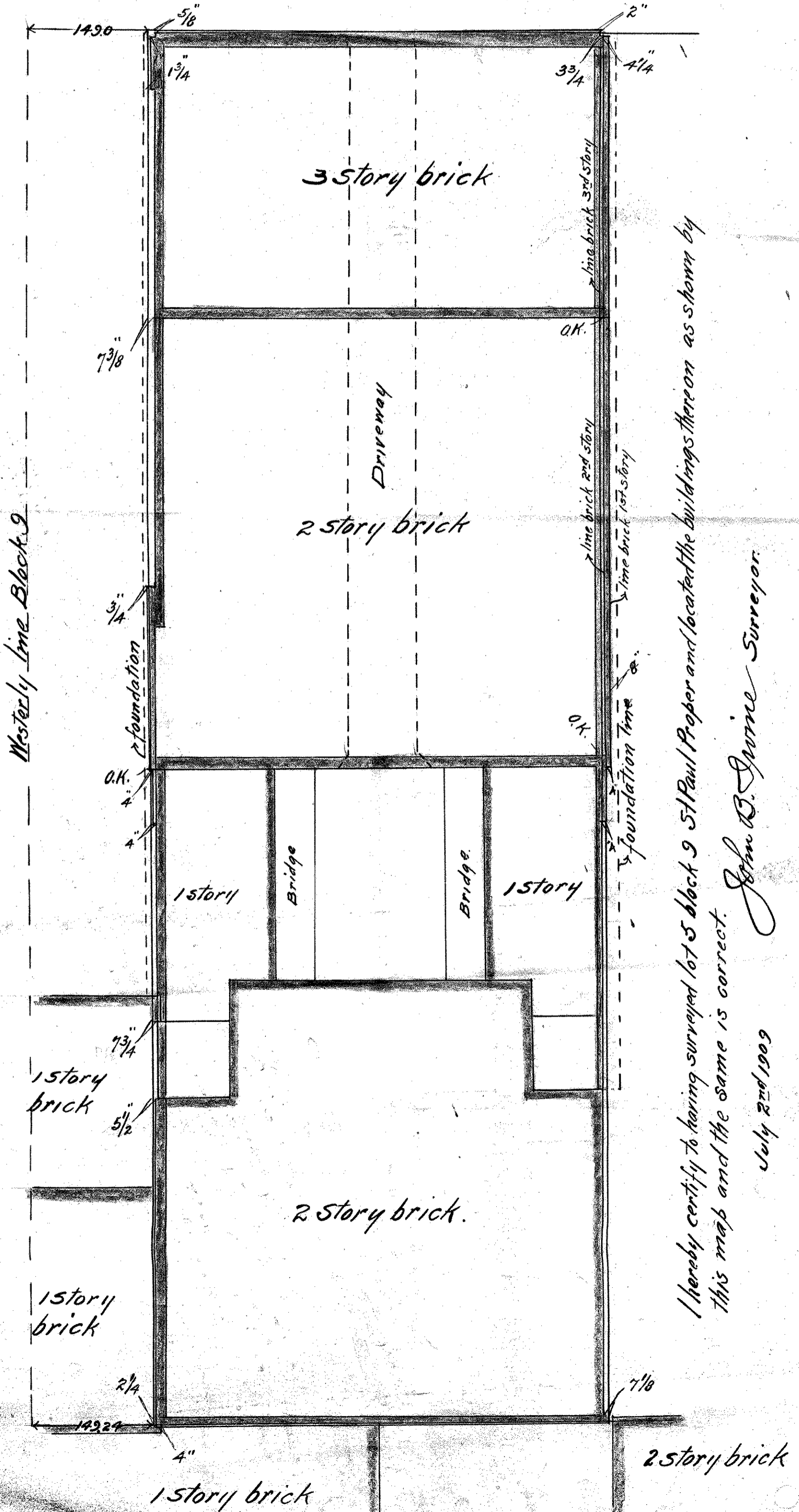


LOT 5 BLOCK 9
ST. PAUL PROPER.

JOHN B. IRVINE, SURVEYOR,
408 GLOBE BLDG.
ST. PAUL MINN.
SCALE 10ft per inch.
JULY 2-1909

E. SIXTH ST.



I hereby certify to having surveyed lot 5 block 9 St Paul Proper and located the buildings thereon as shown by
this map and the same is correct.

John B. Irvine Surveyor.

July 2nd 1909