

CHARLES O. GEORGI COMPANY

2215 West County Road B

Saint Paul 8, Minnesota

MINNESOTA REGISTERED LAND SURVEYOR

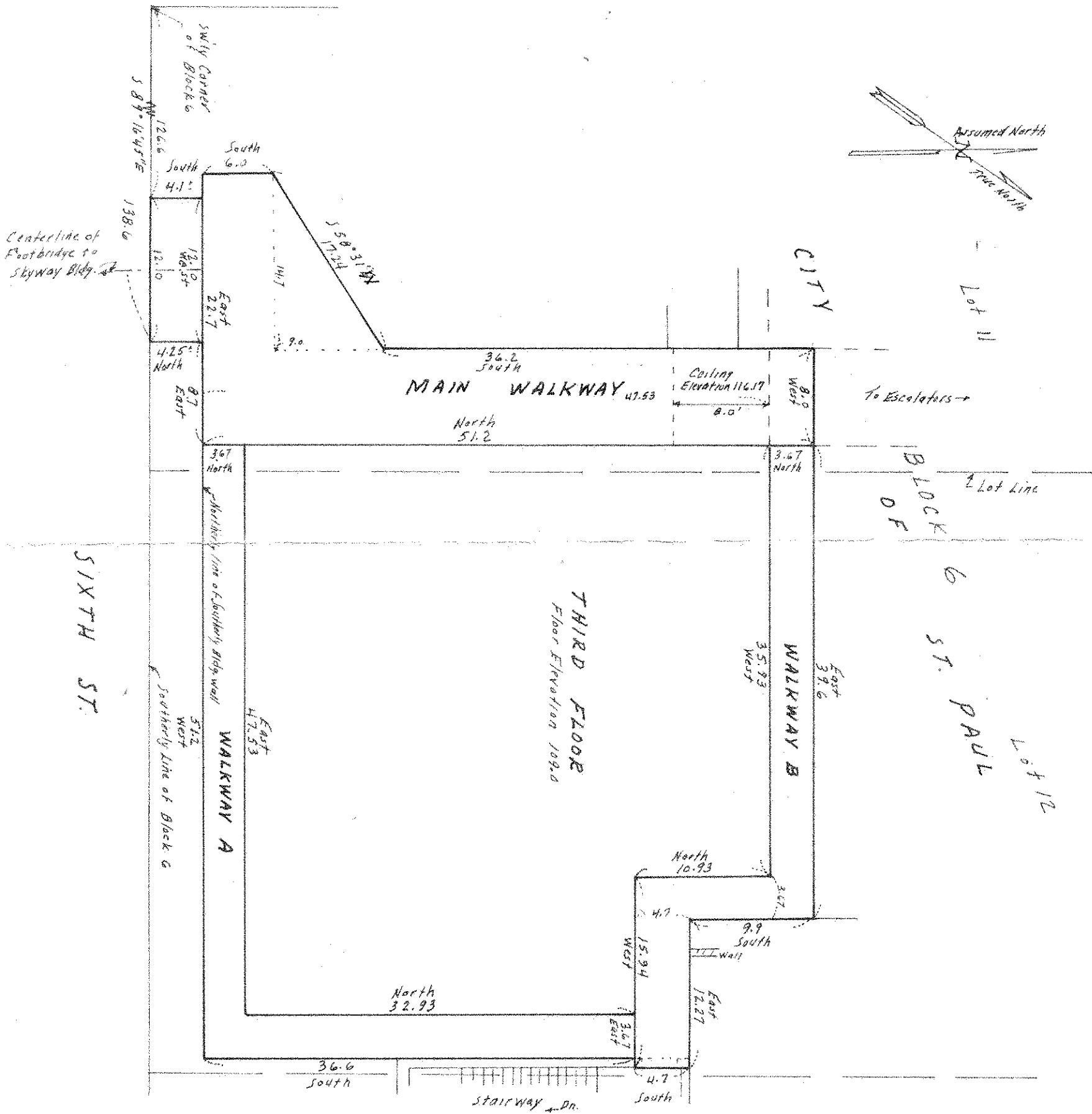


I Hereby Certify that this plat shows a survey made by me of the property described on this plat, and that the corners are correctly placed as shown, and that all locations, encroachments, etc., have been correctly shown.

Surveyed For DAYTONS
Date December 1971
Scale 1" = 10'

By Charles O. Georgi
REGISTERED LAND SURVEYOR

WABASHA ST.



SHEET A is omitted
SHEET B

Lot 13