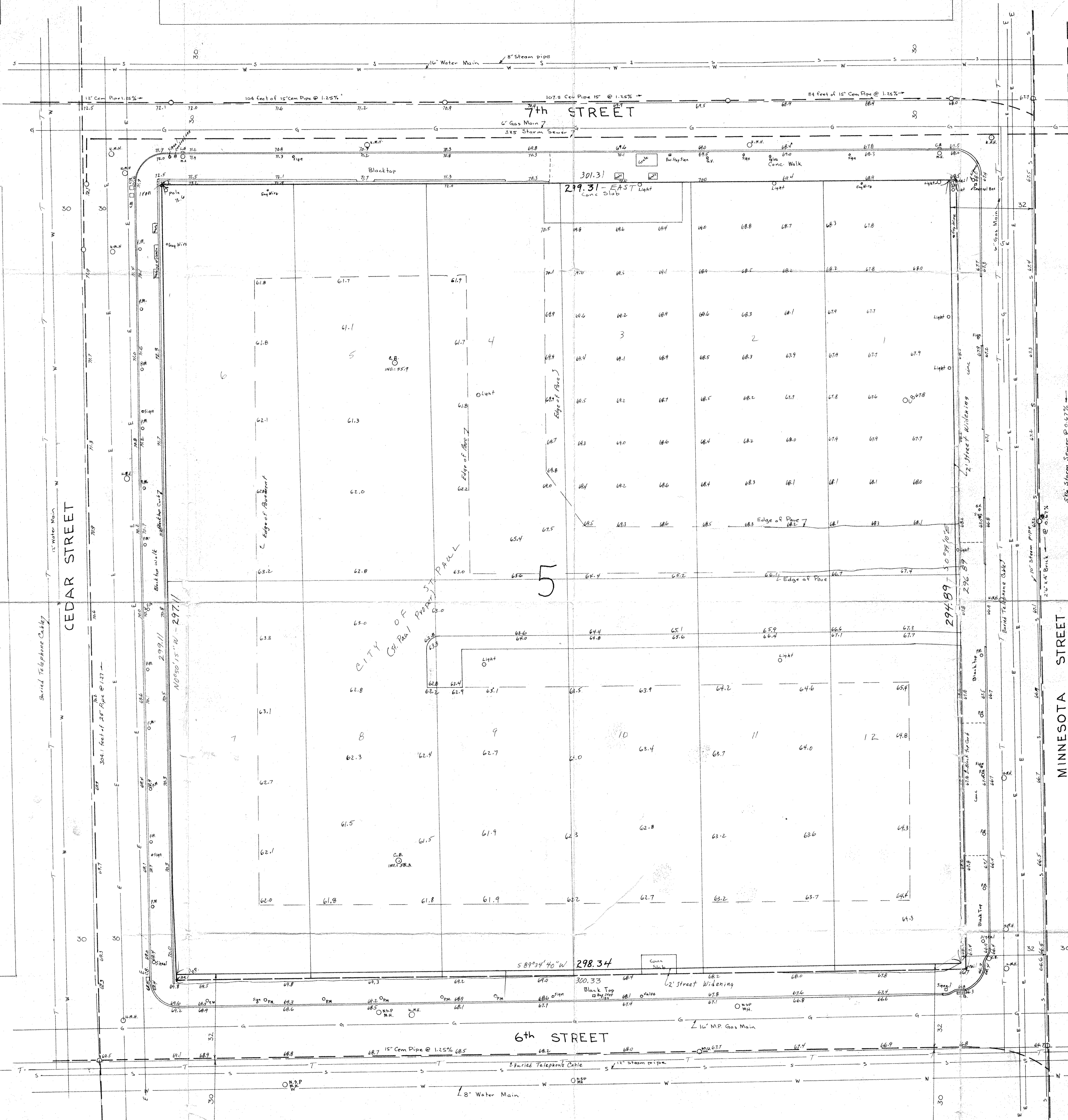


442
B
S.M. 75.92



DESCRIPTION: (Contains 88,448 sq. ft., more or less)
 Lot 1, Block 5, City of St. Paul (St. Paul Proper) except the Easterly 2 feet thereof.
 Lots 2, 3, 4, 5, and 6, Block 5, City of St. Paul (St. Paul Proper), Lots 7, 8, 9, 10, and 11, Block 5, City of St. Paul (St. Paul Proper), except the Southerly 2.0 feet thereof.
 Lot 12, Block 5, City of St. Paul (St. Paul Proper) except the Southerly and Easterly 2.0 feet thereof.

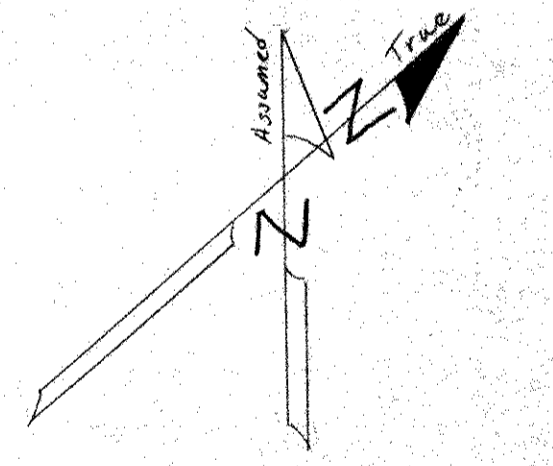
Ramsay County, Minnesota
 * See enclosed boundary survey.

NOTES:
 All elevations are City of St. Paul Datum
 B.M. 69.85: Top Hydrant SE Corner 7th & Minnesota (as shown)
 B.M. 75.92: Top Hydrant NW Corner 7th & Cedar (as shown)
 T Buried Telephone Cables
 W Buried Water Mains
 S Buried Steam Lines
 G Buried Gas Lines
 E Buried Electric Cables
 Sewer lines

Utilities as per public engineering records and to accuracy of same.
 Contact utility company prior to excavation for field location.
 FH Denotes Fire Hydrant
 OS Denotes Sewer or Utility Man Hole
 WS Denotes Water Shutoff Valve
 GS Denotes Gas Shutoff Valve
 PM Denotes Parking Meter
 CB Denotes Catch basin for surface water runoff
 Western Union Cables buried on the East side of Minnesota Street and the South side of 6th Street. Cable in 7th Street has been Abandoned.

I hereby Certify that this MAP shows a survey made by me, or under my direct supervision, of the property described on this plat, and that the corners are correctly placed as shown, and that the locations and elevations have been correctly shown.

Charles D. Georgi
 Registered Land Surveyor - Minnesota #3960



SCALE: 1"=16'

SITE MAP
 OXFORD PROP
 US LTD
 ST. PAUL, RAMSEY COUNTY, MINN.

Charles D. Georgi Co.
 Registered Civil Engineer & Land Surveyor
 3092 N. Lexington Ave., St. Paul, Minnesota
 483-4408 July 1977 55113