

NE 6 28 22

Certificate of Survey

From the office of
GEORGI-SCHMIDT & ASSOC. INC.
3092 No. Lexington Ave., Roseville, Mn. 55113
LAND SURVEYING
483-4408

I Hereby Certify that this plat shows a survey made by me of the property described on this plat, ~~and that the corners are correctly placed as shown,~~ and that all locations have been correctly shown.

Job Number: 249

Surveyed For A. C. Claseman

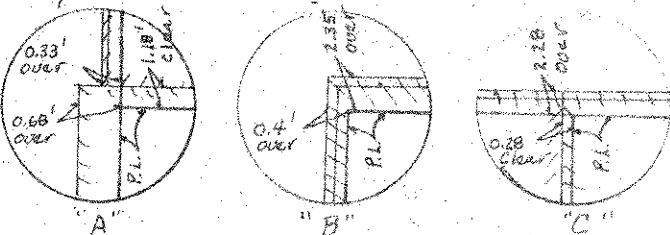
Date 2/16/79

Scale 1" = 30'

By Donald W. Schmidt
REGISTERED LAND SURVEYOR

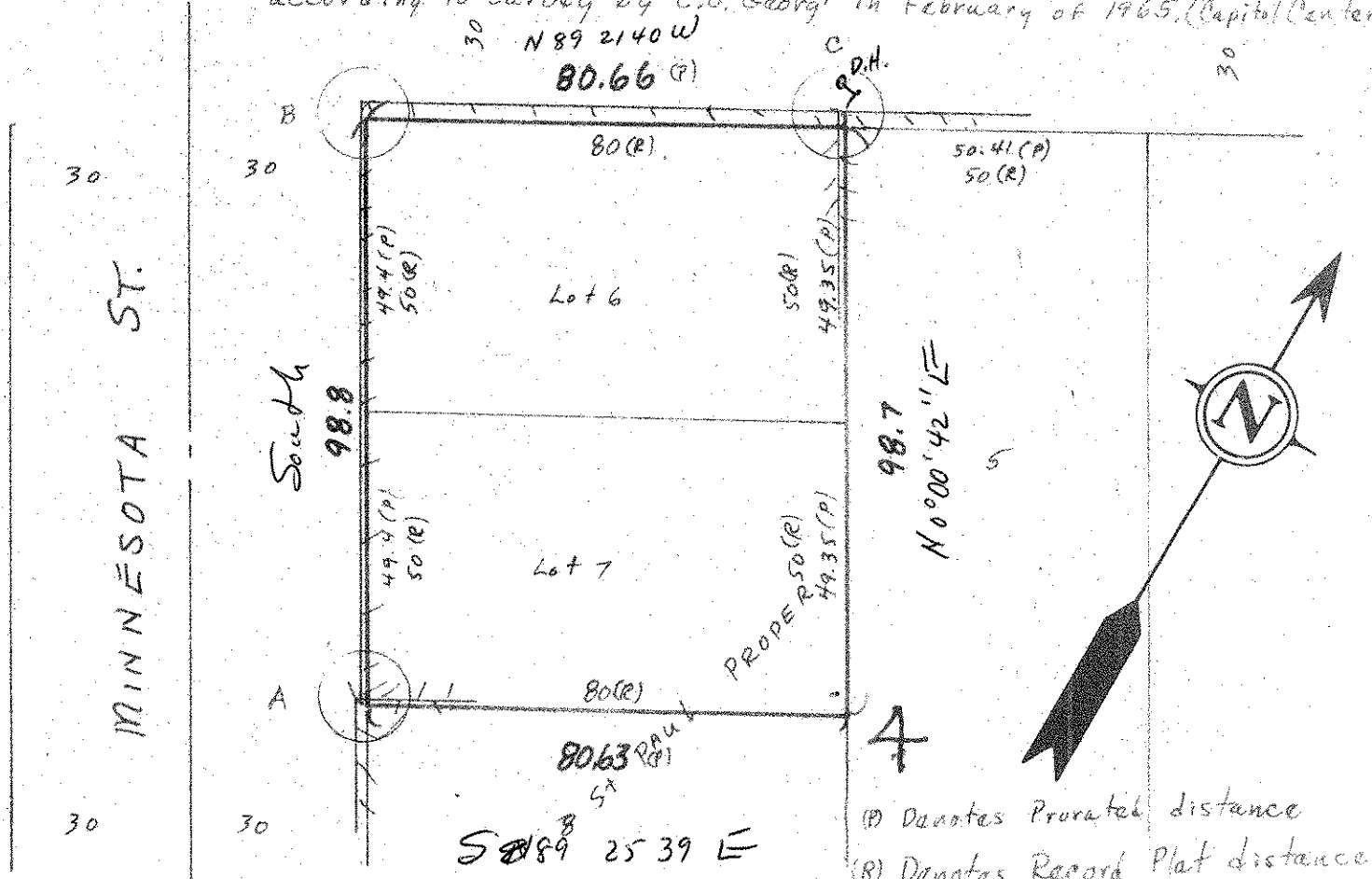
Description: (Contains 7963.62 Sq Ft, m.o.l. = 0.1828 Acres, m.o.l.)
Lots 6 and 7, Block 4, St. Paul Proper

Ramsay County, Minnesota



E SEVENTH ST.

* Surveyor's Note: Survey done in accord with available City Notes and according to Survey by C.O. Georgi in February of 1965, (Capitol Center)



(P) Denotes Proximate distance
(R) Denotes Record Plat distance