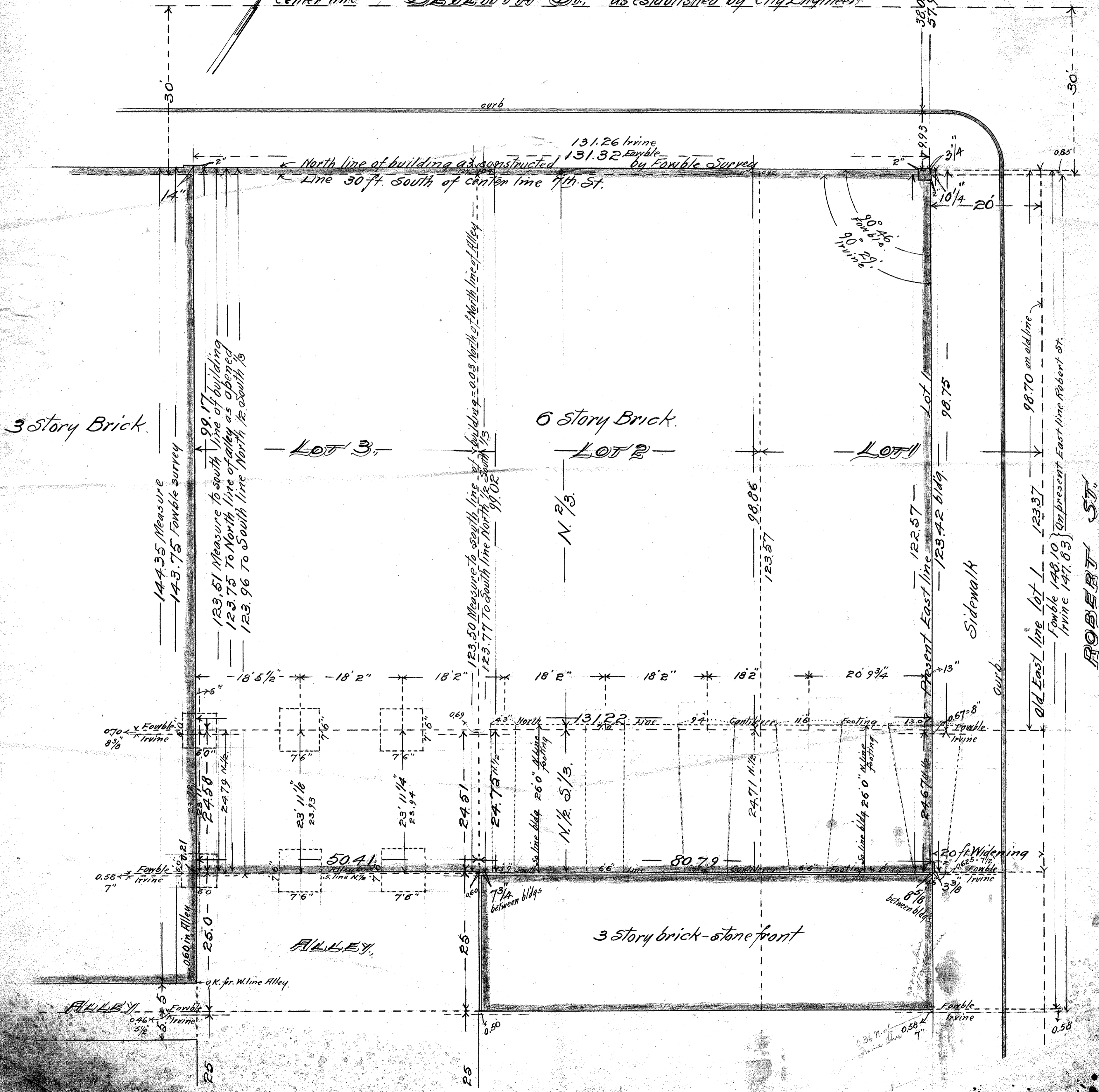


NORTH 2/3 & NORTH 1/2 SOUTH 1/3 EXCEPT ALLEY
 LOTS 1, 2 & 3, BLOCK 4
 ST. PAUL PROPER.

JOHN B. IRVINE, SURVEYOR.
 ST. PAUL, MINN.
 JULY 31-1918

Scale 10 ft. per inch.

Center line SEVENTH ST. as established by City Engineers



ROBERT ST.