

CHARLES O. GEORGI COMPANY

2215 West County Road B

Saint Paul 8, Minnesota

MINNESOTA REGISTERED LAND SURVEYOR

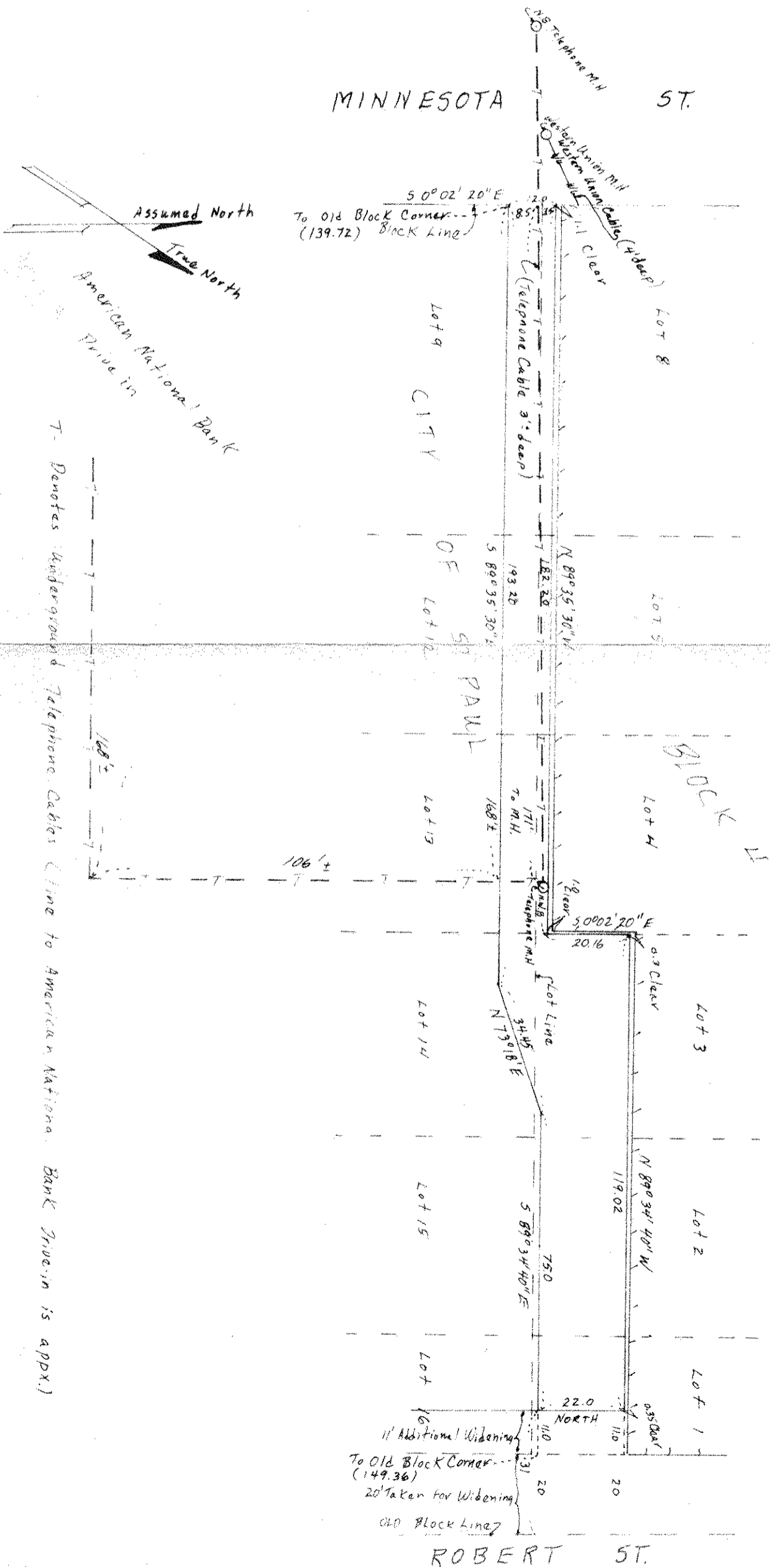


Certificate of Survey

I Hereby Certify that this plat shows a ^{Location} survey made by me of the property described on this plat, ~~and that the corners are correctly placed as shown,~~ and that all locations, encroachments, etc., have been correctly shown.

Surveyed For Housing Authority
Date June 1972
Scale 1" = 30'

By Charles O. Georgi
REGISTERED LAND SURVEYOR



NOTE: Location and depth per field stake out by above and to accuracy of same.
Location of buried Telephone Cables and Western Union cables in Alley in Block 4, City of St. Paul Ramsey County, Minn.

ROBERT ST.