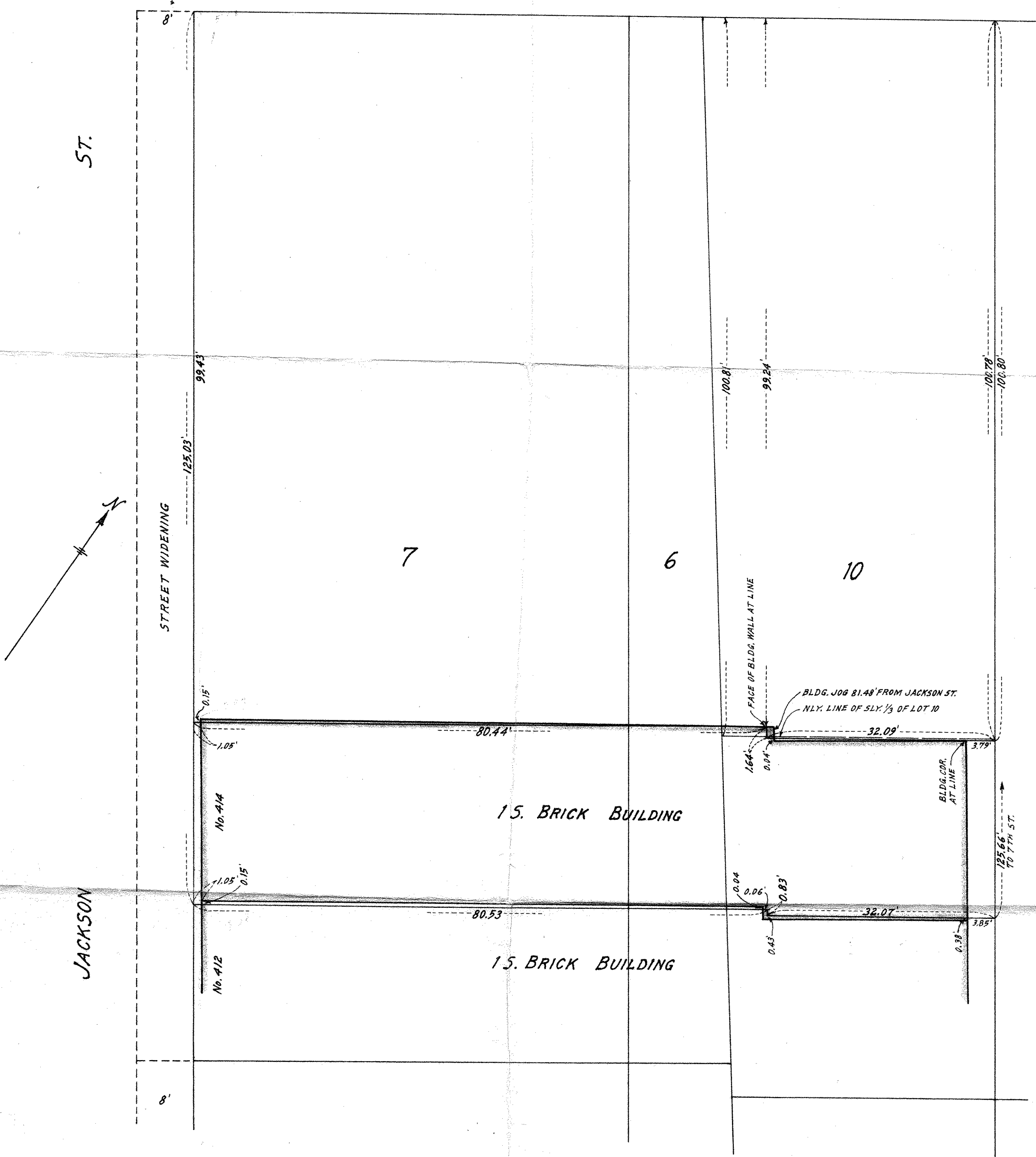


E. SEVENTH

ST.



PLAT OF SURVEY

by
R. C. WOLFGAM
REGISTERED LAND SURVEYOR
ST. PAUL, MINNESOTA

I hereby certify that this is a true and correct plat of a survey of the land shown and described hereon, and that any monuments or markers indicated hereon have been placed as shown, and that any improvements or physical conditions indicated hereon are as shown.

Surveyed November 1965.

Plat Scale - 1 in. = 100 ft.

Description - Part of the Southerly 1/3 of Lots 6 and 7, Block 2, St. Paul Proper and part of the Southerly 1/3 of Lot 10, Block 8, Whitney and Smith's Addition to St. Paul.

R. C. Wolfgam