

FROM THE OFFICE OF

CHARLES O. GEORGI COMPANY

2215 West County Road B Saint Paul 8, Minnesota
MINNESOTA REGISTERED LAND SURVEYOR



I Hereby Certify that this plat shows a survey made by me of the property described on this plat, and that the corners are correctly placed as shown, and that all locations, encroachments, etc., have been correctly shown.
Tentative corners set. Additional measurements to be taken.

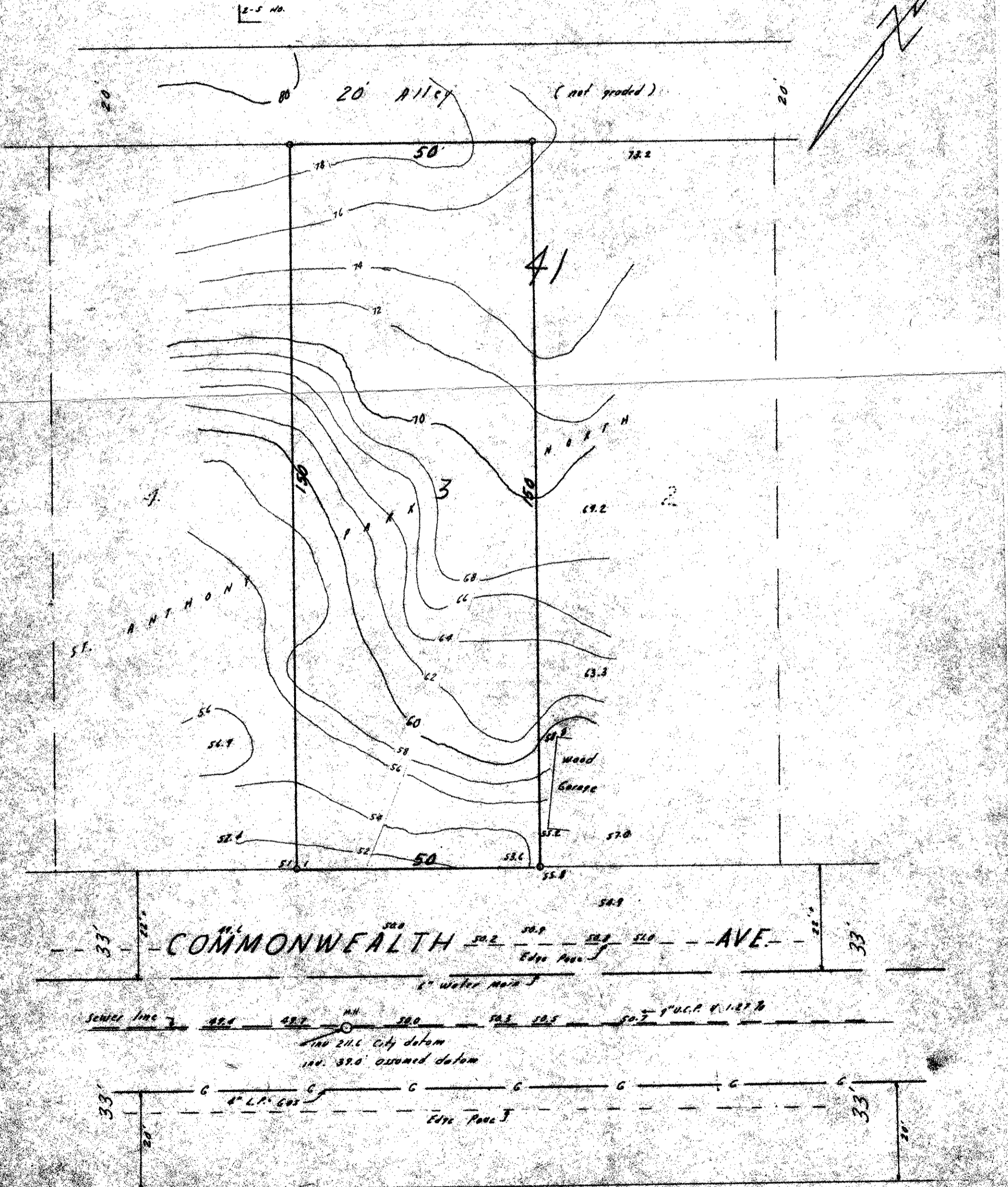
Surveyed For: Elizabeth Close - Elsie Worch
Date: June 1966
Scale: 1" = 20'

By: *Charles O. Georgi*
REGISTERED LAND SURVEYOR

Lot 3
Block 41
St. Anthony Park North

NOTES:

- B.M. 50.00 assumed datum top of M.N. opposite property
- Add 172.6 for City datum
- Misc. paplar trees not shown
- All utilities per public record and to accuracy of same.



Denotes Iron Monument