

FROM THE OFFICE OF

# CHARLES O. GEORGI COMPANY

2215 West County Road B

Saint Paul 8, Minnesota

REGISTERED CIVIL ENGINEER AND LAND SURVEYOR

## Certificate of Survey

*I Hereby Certify that this plat shows a ~~building location~~ survey made by me on the property described on this plat, and that all locations, have been correctly shown, and that corners are correctly placed as shown.*

Date *August 1967*.....

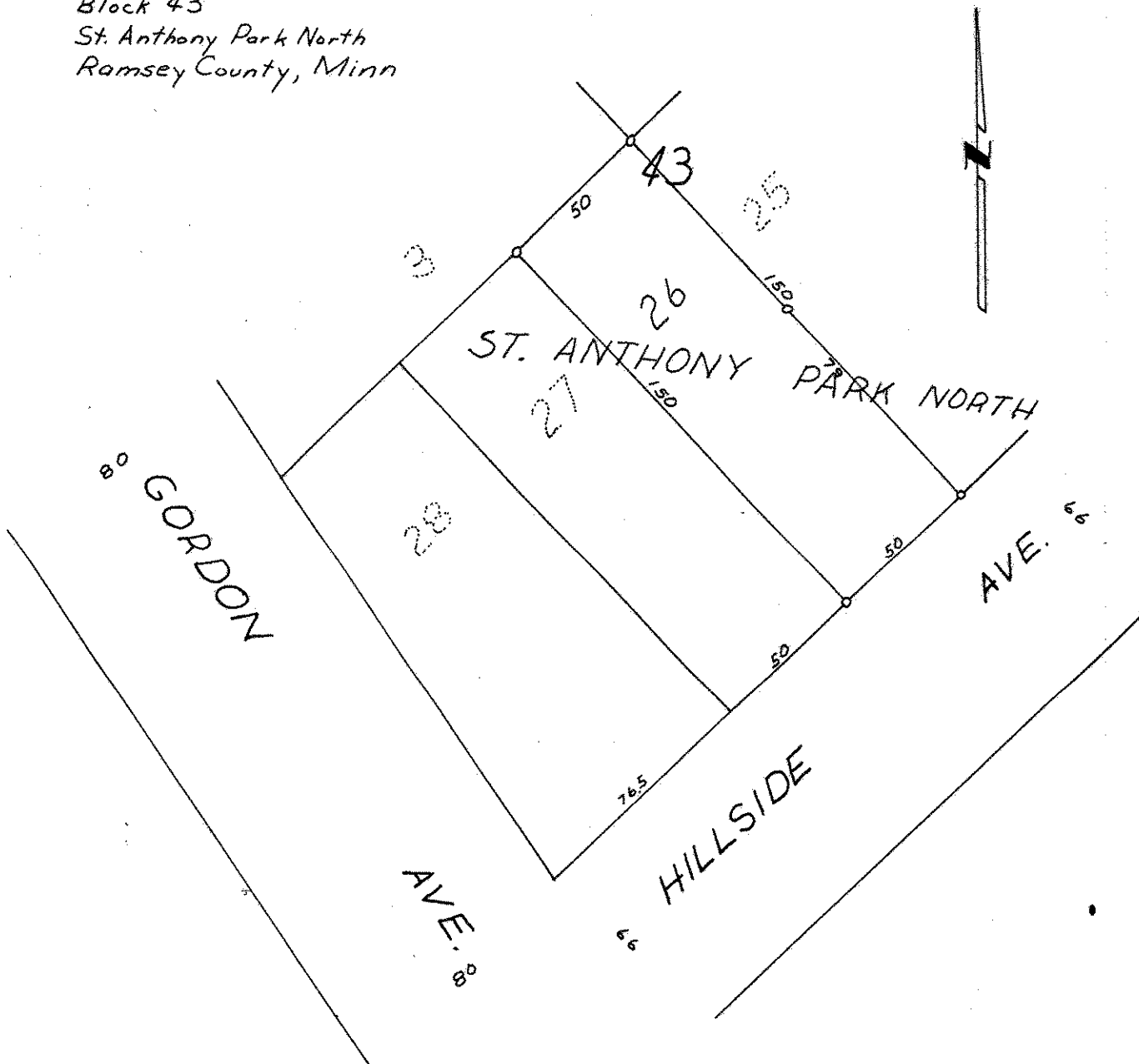
Scale 1" = *50'*.....

By *Charles O. Georgi*  
REGISTERED LAND SURVEYOR

L. Anderson

**Description:**

*Lot 26  
Block 43  
St. Anthony Park North  
Ramsey County, Minn*



*o denotes iron monument*