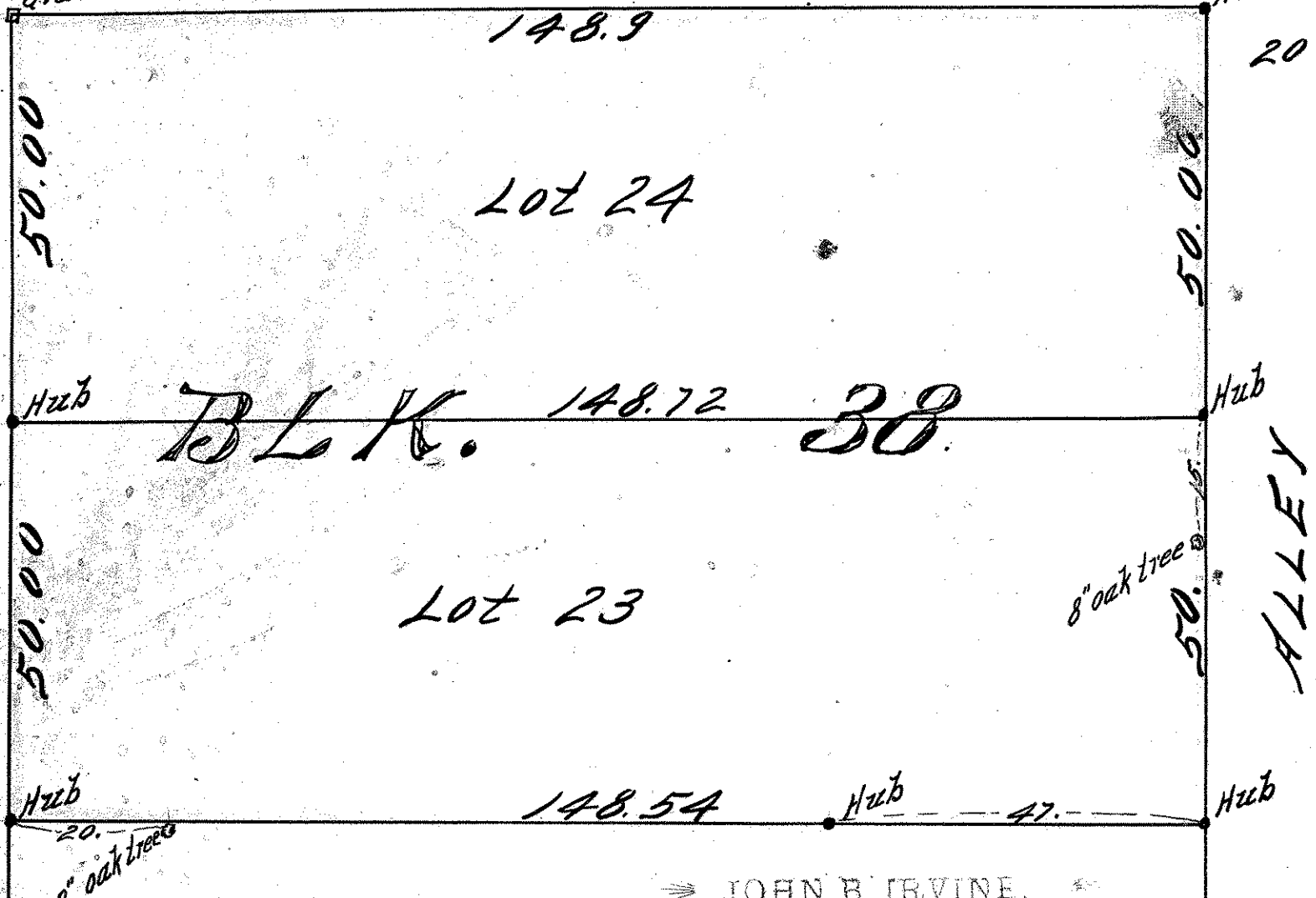


CARTER 80 AVE.

NESTON ST. 60

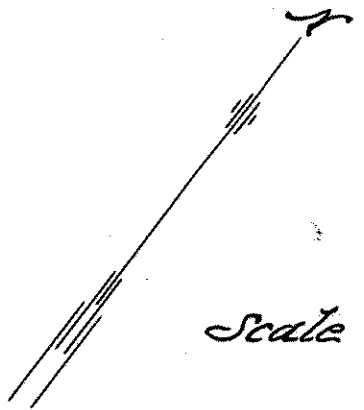
Granite Mont.



St. Paul, Minn.
Nov. 9th 1901

I hereby certify that this diagram
correctly represents "LOTS 23 & 24 BLOCK 38,
ST. ANTHONY PARK NORTH." as
surveyed by me this day

County Surveyor
Room 16 Court House.



Scale 20 feet pr. inch.

JOHN B. IRVINE,
Co. Surveyor, R. 16, Court House

Nov 9 1901