

LOT 23 BLOCK 32.

ST. ANTHONY PARK NORTH.

JOHN B. IRVINE, SURVEYOR.

408 GLOBE BLDG.

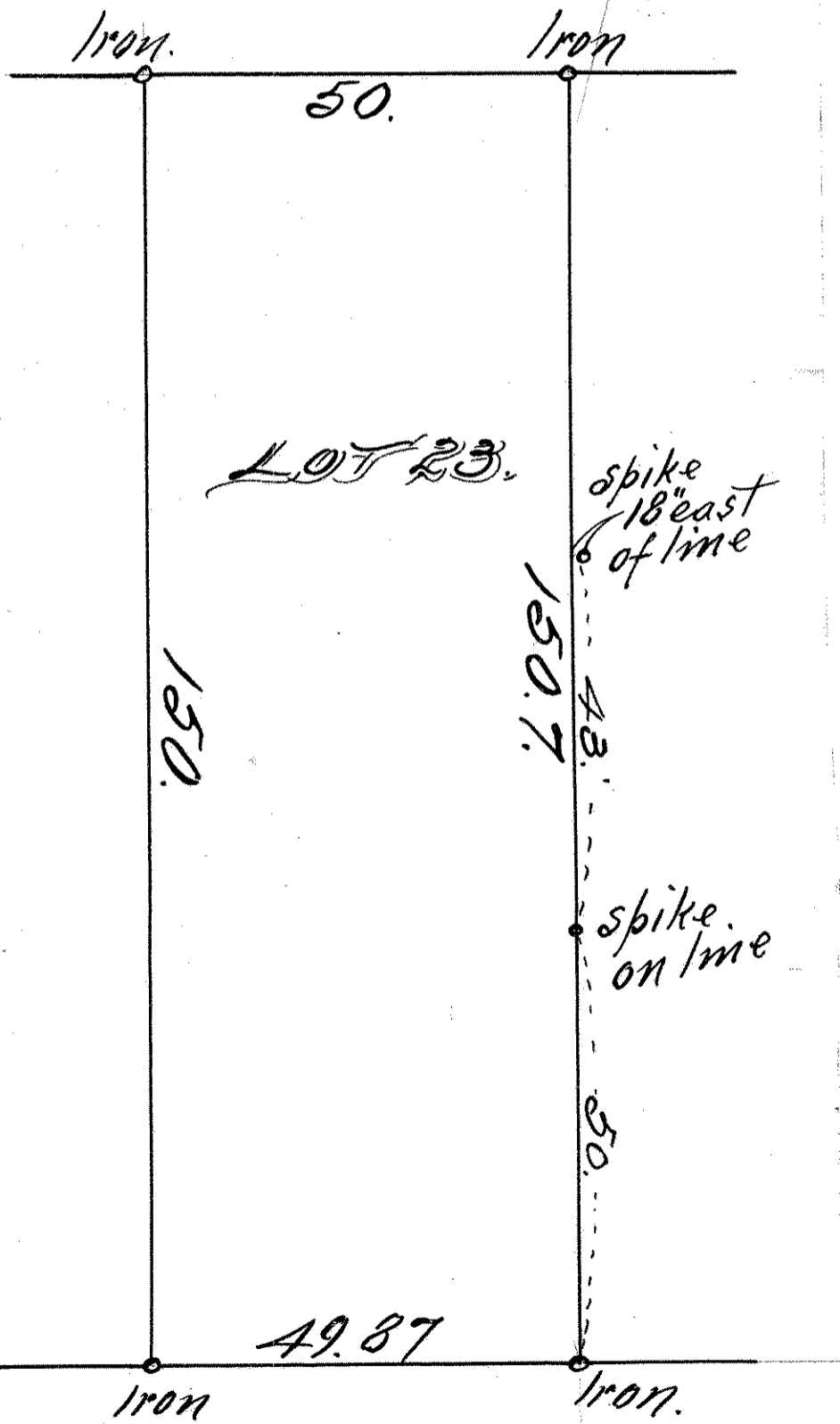
ST. PAUL, MINN.

NOV. 1-1912.

scale 20 ft. per inch.

N<sup>o</sup>

ALLEY 20'



LOT 23.

spike 18" east of line

150.7

150.

spike on line

50.

49.87

CARTER AVE.