

LOTS 12, 13, 14, 16 & 21 BLOCK 29.

ST. ANTHONY PARK NORTH,

JOHN B. IRVINE, SURVEYOR,

416 GLOBE BLDG.

ST PAUL MINN.

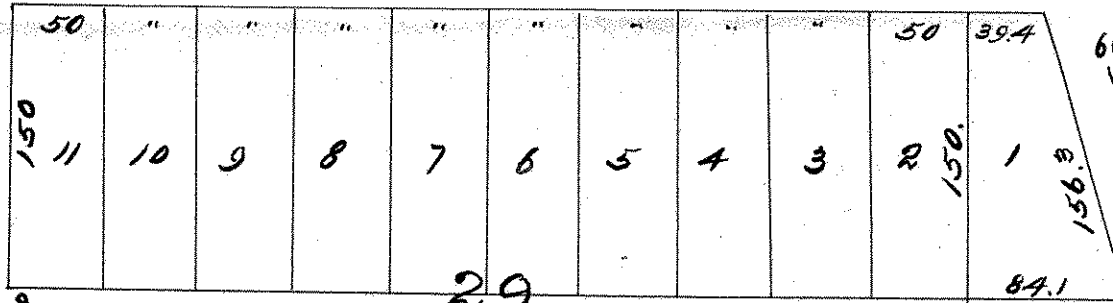
FEB. 11. 07.

SCALE 100 ft per inch.

• INDICATES IRONS

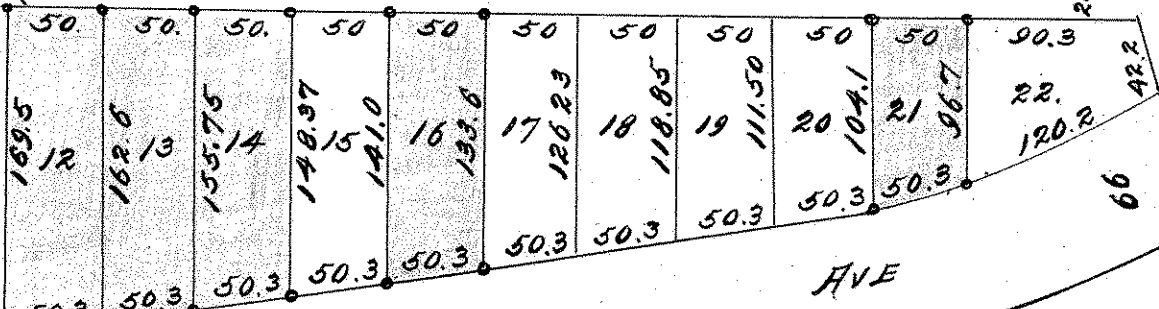
60' CHILCOMBE AVE

BROMPTON ST.



29

60



DOSWELL AVE

66

60 HESTON ST.

E.

66