

FROM THE OFFICE OF

# CHARLES O. GEORGI COMPANY

2215 West County Road B

Saint Paul, Minnesota 55113

REGISTERED CIVIL ENGINEER AND LAND SURVEYOR

## Certificate of Survey

*I Heroby Certify that this plat shows a survey made by me of the property described on this plat, and that the corners are correctly placed as shown, and that all locations have been correctly shown.*

Surveyed For Lowell Satre

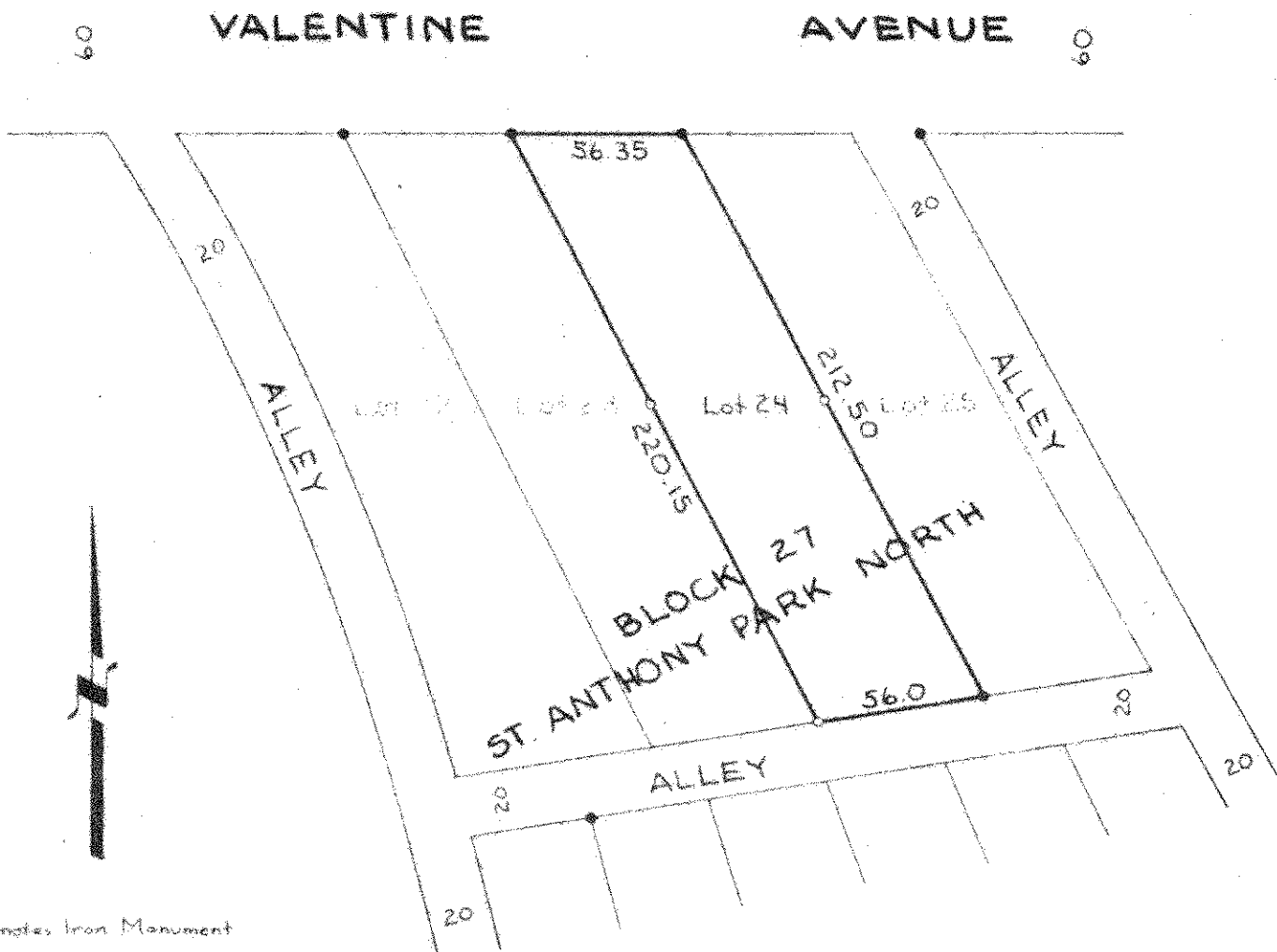
Date May 1975

Scale 1" = 60'

By Charles O. Georgi  
REGISTERED LAND SURVEYOR

**Description:**

Lot 24,  
Block 27,  
St. Anthony Park North,  
Ramsey County, Minn.



○ Denotes Iron Monument  
 ● Denotes Iron Monument found in place