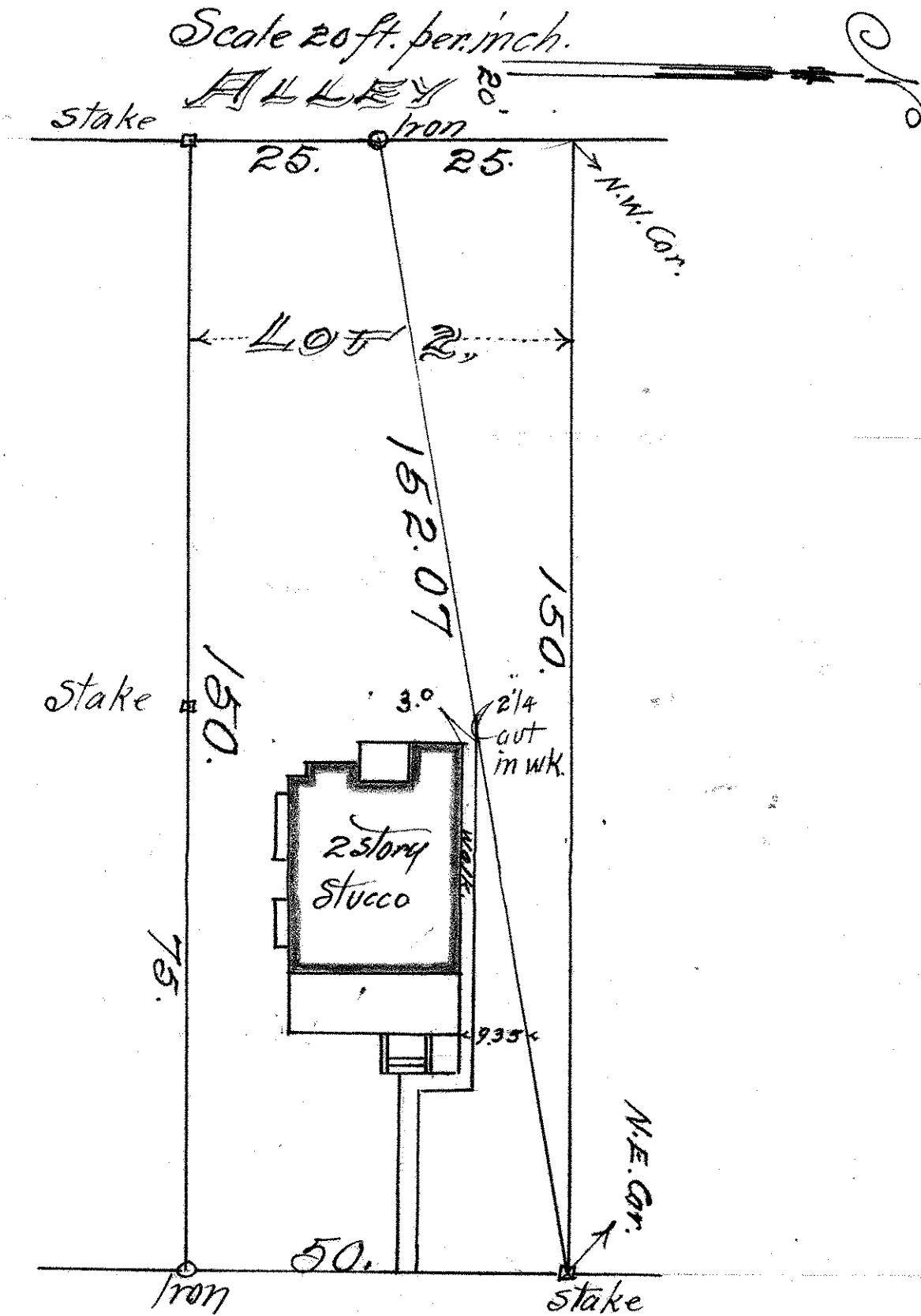


THAT PART OF LOT 2 BLOCK 13
 ST. ANTHONY PARK NORTH,
 LYING SOUTH OF A LINE DRAWN
 FROM THE N.E. COR. THERE OF TO
 A POINT ON THE WEST LINE THERE OF
 25 ft. SOUTH OF THE N.W. COR. THERE OF

John B. Irvine, Surveyor.

June 15th 1920.

Scale 20 ft. per inch.



CHELMSFORD AVE.