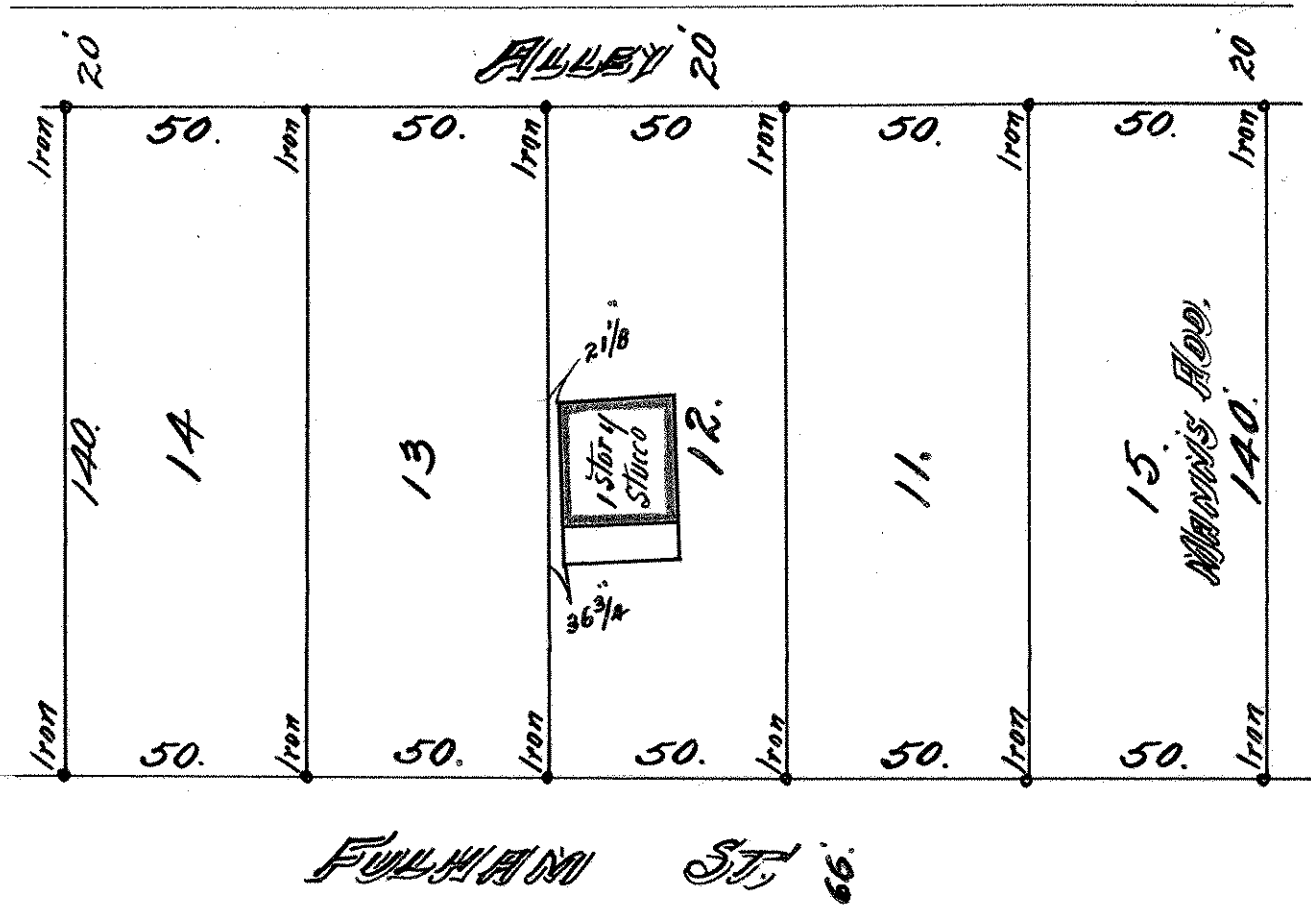


LOTS 11, 12, 13, 14 BLOCK 11.
 ST ANTHONY PARK NORTH.
 LOT 15 BLOCK 2
 MANN'S ADD.

JOHN B. IRVINE, SURVEYOR.
 408 GLOBE BLDG.
 ST. PAUL, MINN.

N

JUNE 10-1912.
 scale 40 ft. per inch.



FULHAM ST. 66.