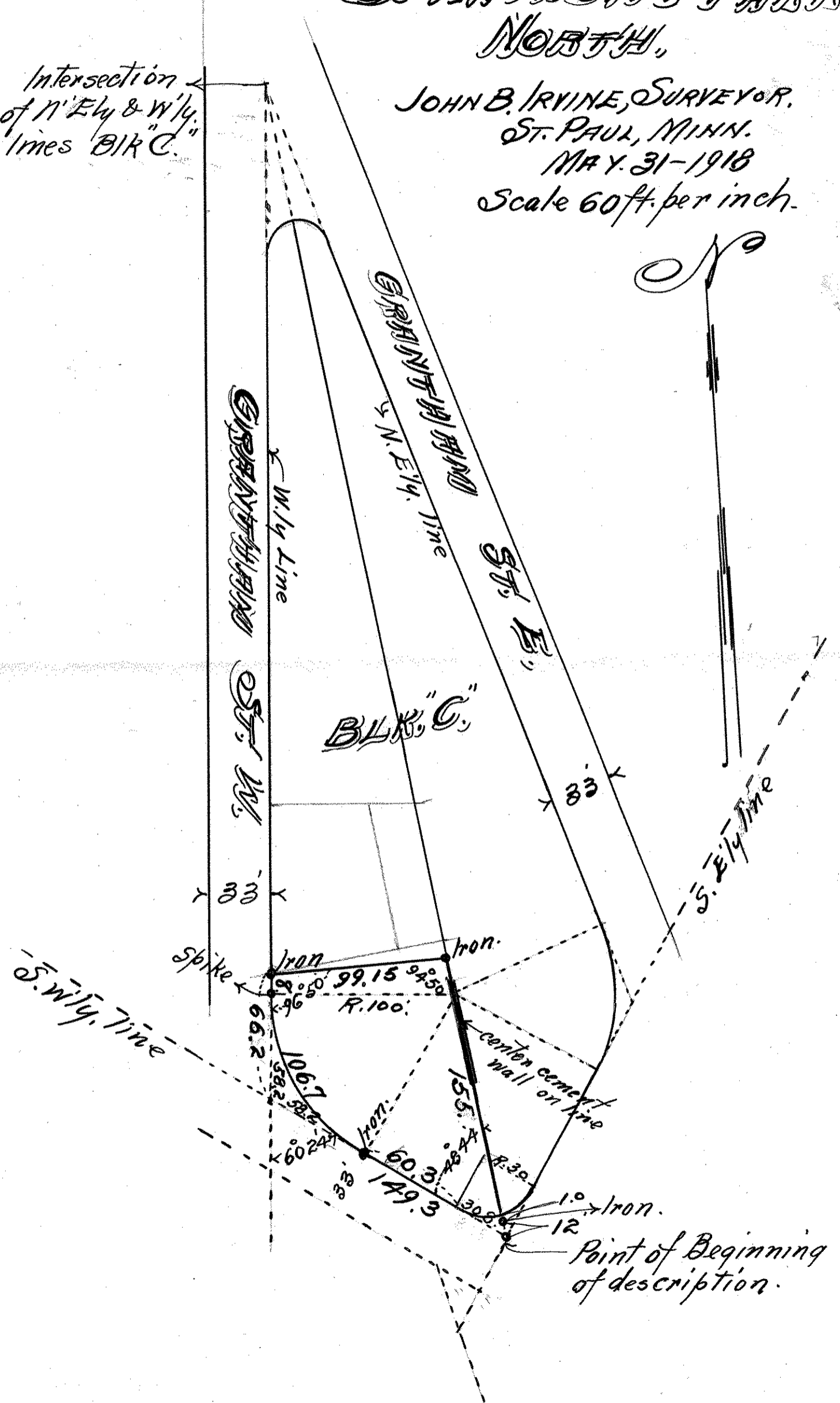


PART OF
 BLOCK C.
 ST ANTHONY PARK,
 NORTH.

JOHN B. IRVINE, SURVEYOR.
 ST. PAUL, MINN.
 MAY 31-1918
 Scale 60 ft. per inch.

Intersection
 of N. Ely & Wly.
 lines "B.K.C."



Point of Beginning
 of description.