

WEST 40 ft. LOT 4

BLOCK 82

ST. ANTHONY PARK

PLAT I,

JOHN B. IRVINE, SURVEYOR.

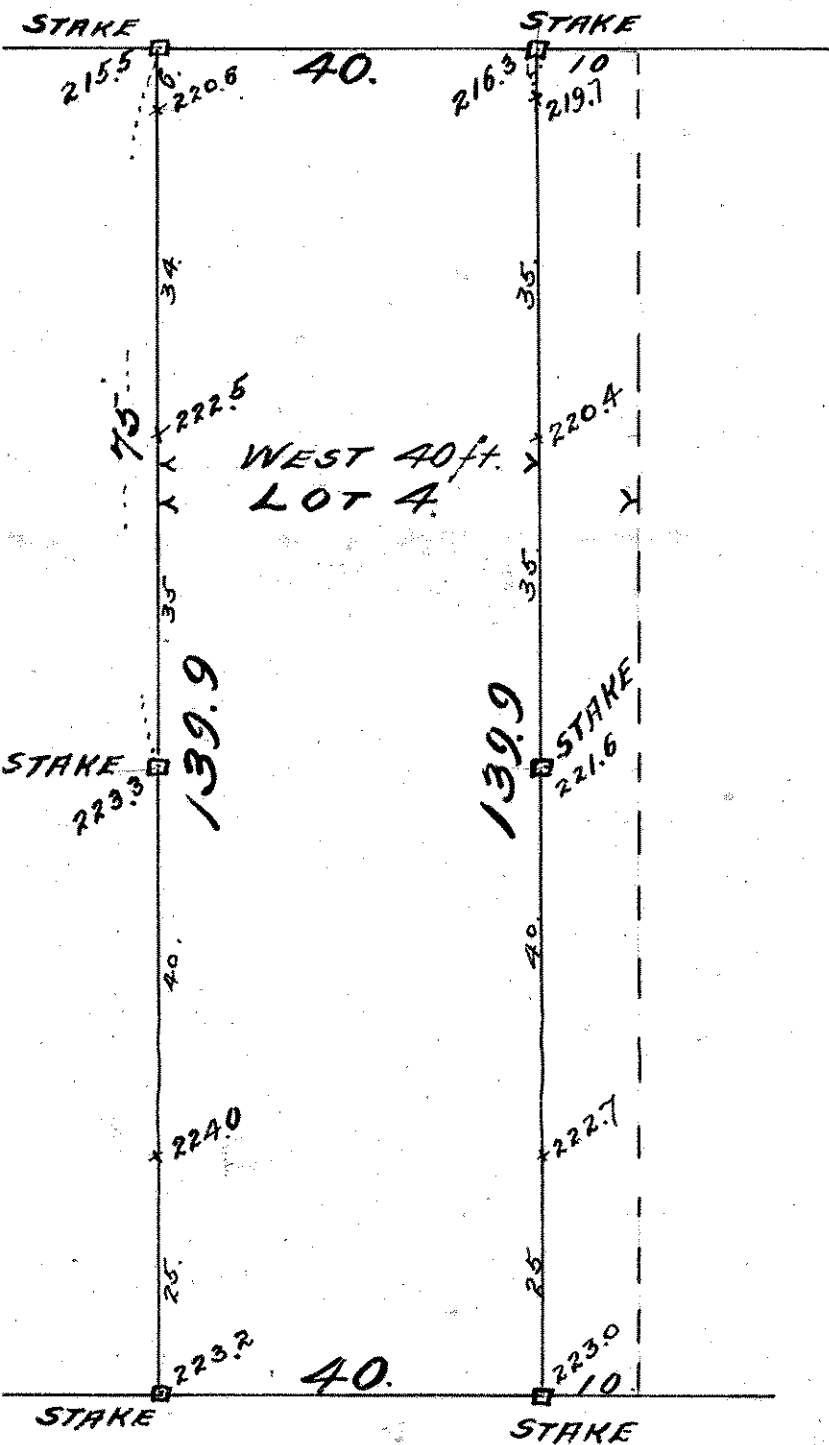
408 GLOBE BLDG.

ST PAUL, MINN.

MAY 11-1909

SCALE 20 ft. per inch.

LONG AVE.,



ALLEY 20