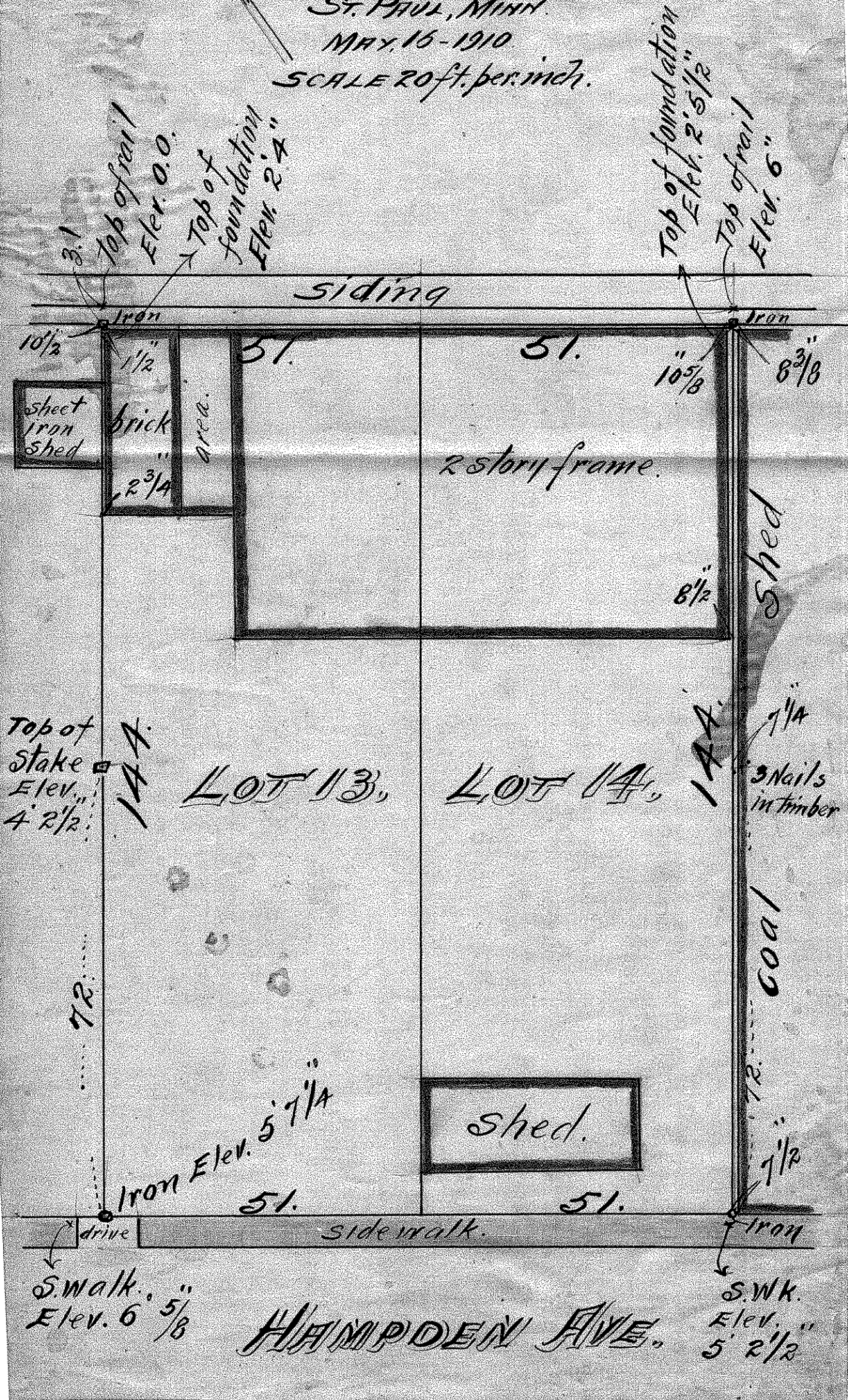


LOTS 13 & 14 BLOCK 75

ST. ANTHONY PARK.

PLAT I.

JOHN B. IRVINE, SURVEYOR.  
408 GLOBE BLDG.  
ST. PAUL, MINN.  
MAY 16-1910  
SCALE 20 ft. per inch.



3.1  
Top of rail  
Elev. 0.0.  
Top of foundation  
Elev. 2.4"

Top of foundation  
Elev. 2'5 1/2"  
Top of rail  
Elev. 6"

siding  
Iron  
10 1/2  
1 1/2  
51.  
51.  
10 5/8  
8 3/8

sheet iron shed

brick area.  
2 3/4

2 story frame.

shed

Top of stake  
Elev. 4'2 1/2"

144

LOT 13,

LOT 14,

144

3/4  
nails in timber

72

Iron Elev. 5'7 1/4"

shed.

coal

72  
1 1/2

drive  
S.W.K.  
Elev. 6'5/8"

sidewalk.

HAMPDEN AVE.

Iron  
S.W.K.  
Elev. 5'2 1/2"