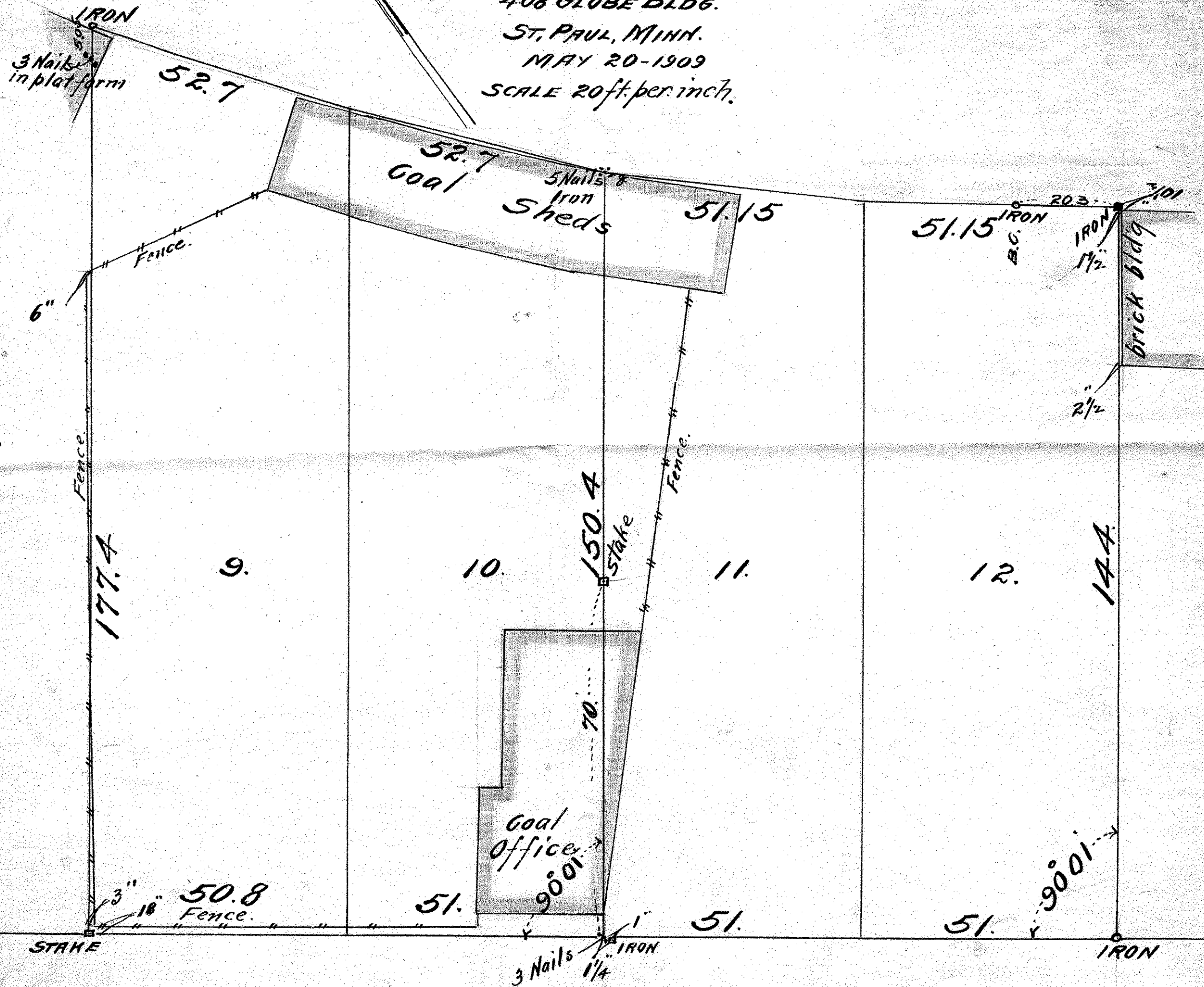


LOTS 9, 10, 11 & 12 BLOCK 75  
 ST. ANTHONY PARK.  
 PLAT No. 1.

JOHN B. IRVINE, SURVEYOR.  
 408 GLOBE BLDG.  
 ST. PAUL, MINN.  
 MAY 20-1909  
 SCALE 20ft. per inch.



50.8  
 50.8  
 100.8  
 100.8  
 100.8

HAMPDEN

AVE.