

LOTS 5, 6, 7, 8, 9 & 10 BLOCK 73

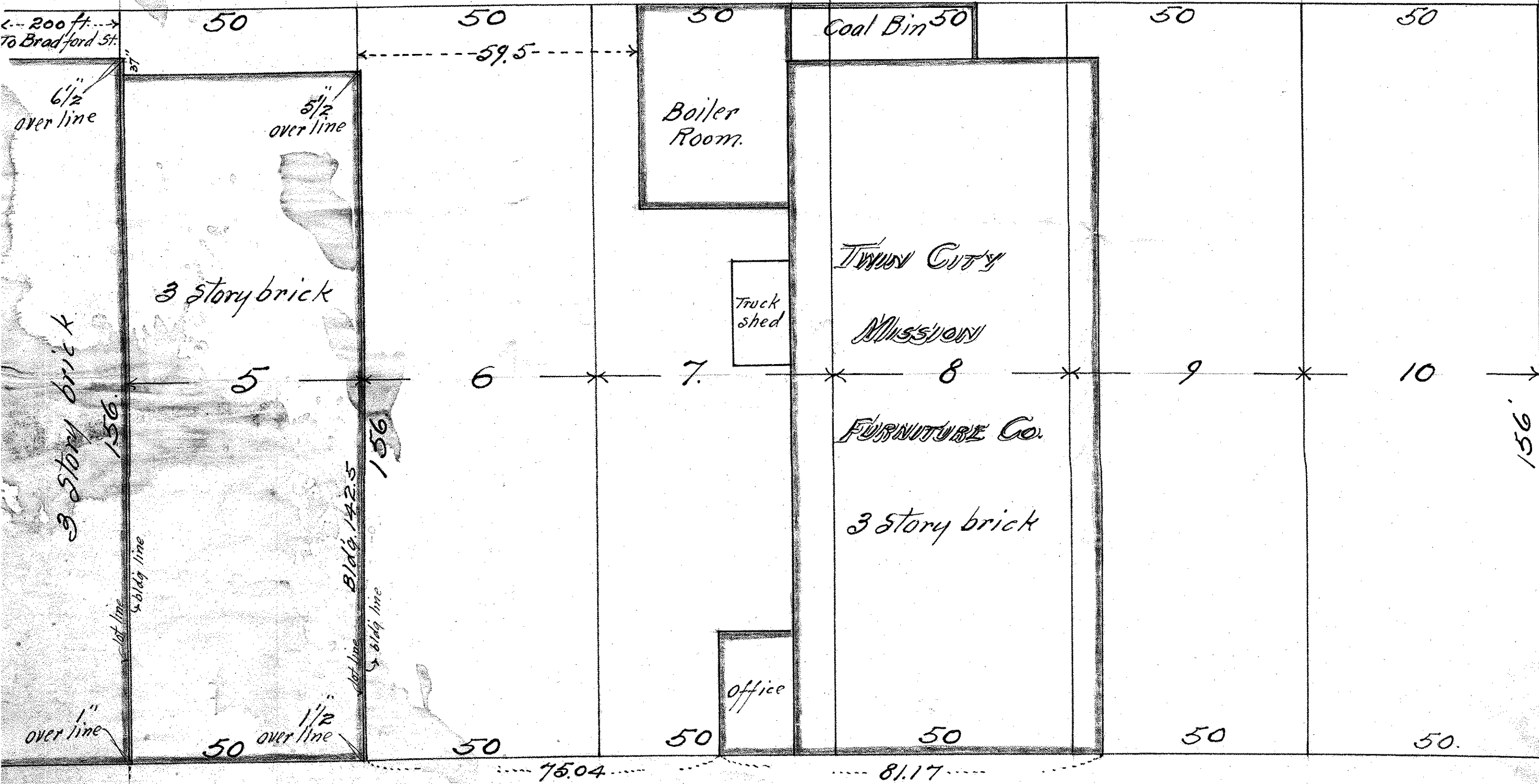
ST. ANTHONY PARK.

John B. Irvine Surveyor.

Jan. 27 - 1920.

Scale 20 ft. per inch.

R. R. Siding



HAMPODEN AVE.

200 ft. To Bradford St.

200 ft. To Bradford St.