

LOTS 1 & 2 BLOCK 66  
ST. ANTHONY PARK.

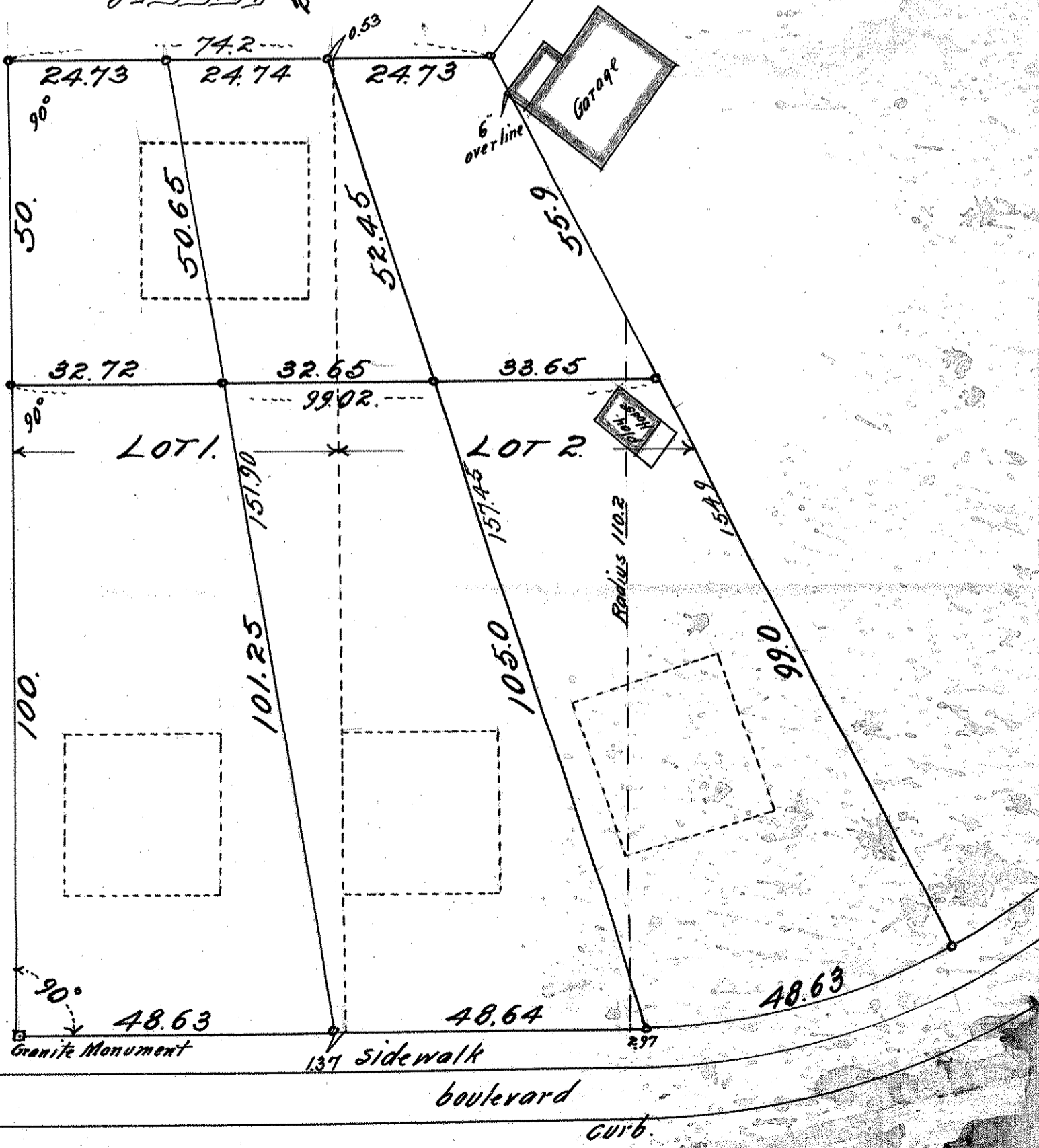
PLAT I.

JOHN B. IRVINE, SURVEYOR  
408 GLOBE BLDG.  
ST. PAUL, MINN  
OCT 29-1913.

scale 20 ft. per inch.

o indicates irons

ALLEY 20'



ST. ANTHONY

BAYLESS

AVE. E.