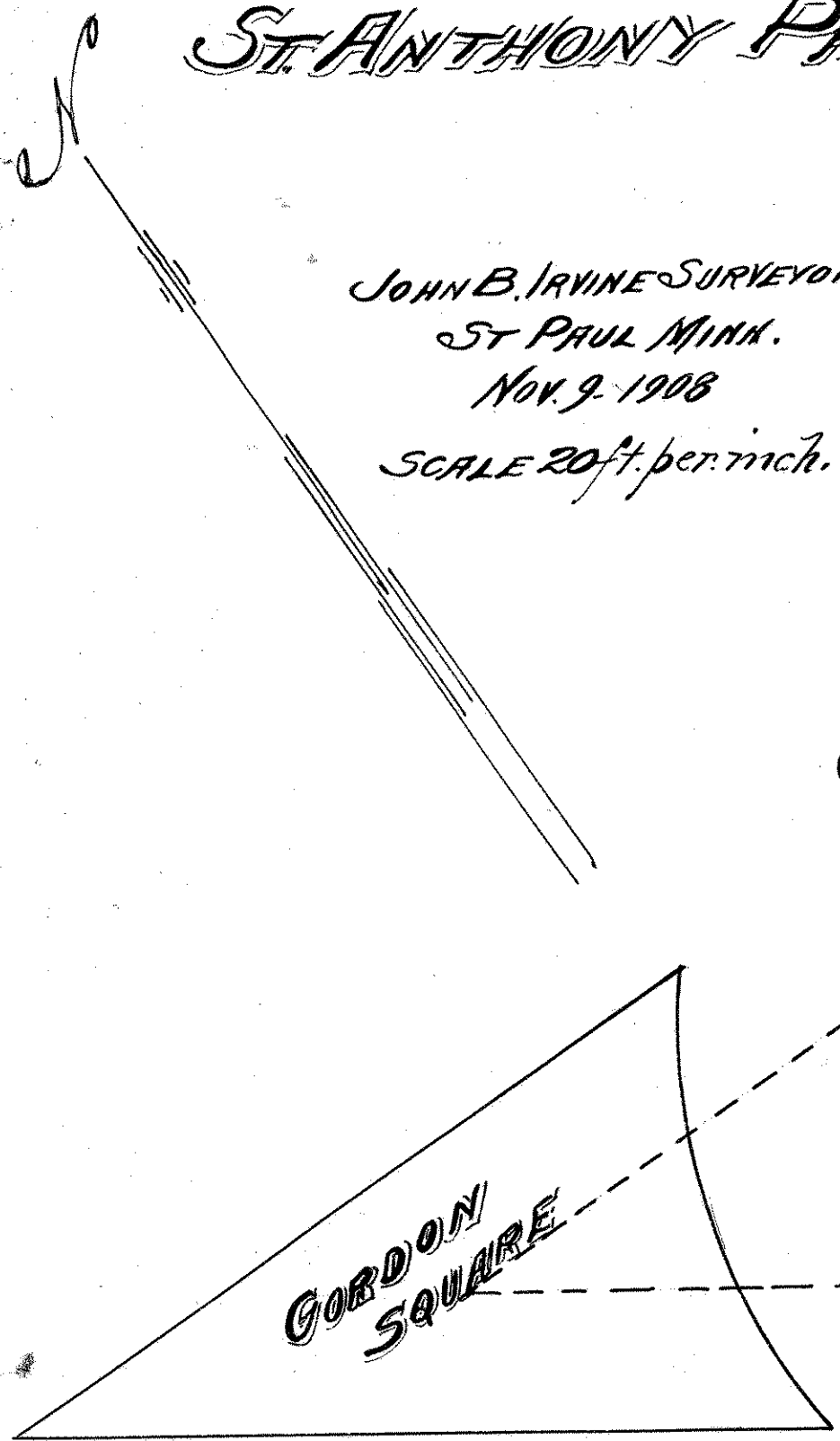
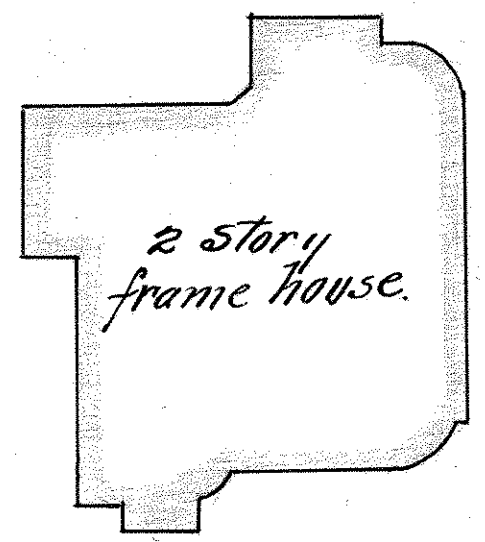
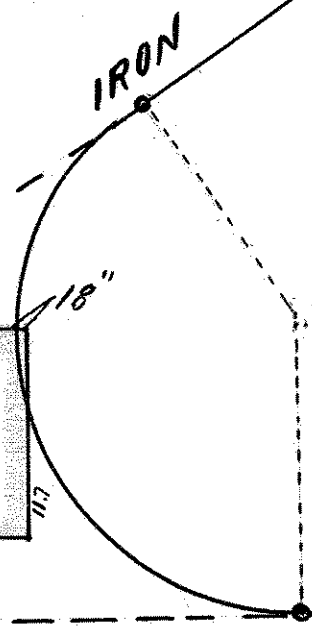


Block 39  
ST. ANTHONY PARK.

JOHN B. IRVINE SURVEYOR.  
ST PAUL MINN.  
NOV. 9. 1908  
SCALE 20ft. per inch.



GORDON AVE.



IRON. 203.7  
BLAKE

150.

110.

AVE.

MONT.

136.8

IRON

LANGFORD PARK PLACE.