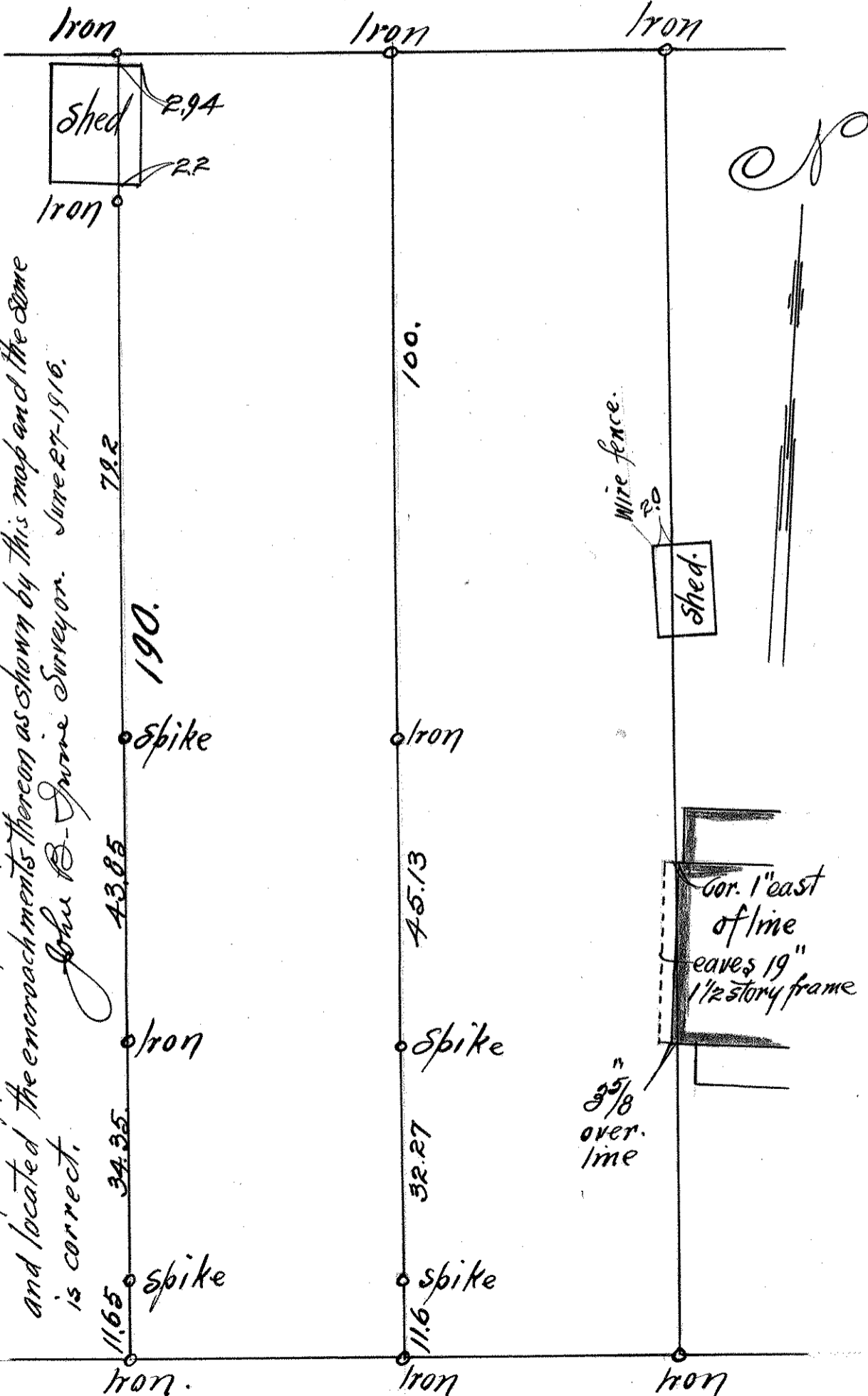


LOTS 20 & 21 BLOCK 38
ST. ANTHONY PARK.

JOHN B. IRVINE, SURVEYOR.
ST. PAUL, MINN.

Survey made JUNE 27-1916
Oct. 1916 scale. 20ft. per inch.

ALLEY, 20'



I hereby certify to having surveyed lots 20 & 21 Block 38 St. Anthony Park and located the encroachments thereon as shown by this map and the same is correct.

John B. Irvine Surveyor. June 27-1916.

GORDON AVE.