

THE WESTERLY 40ft. LOT 13 BLOCK 26

ST. ANTHONY PARK.

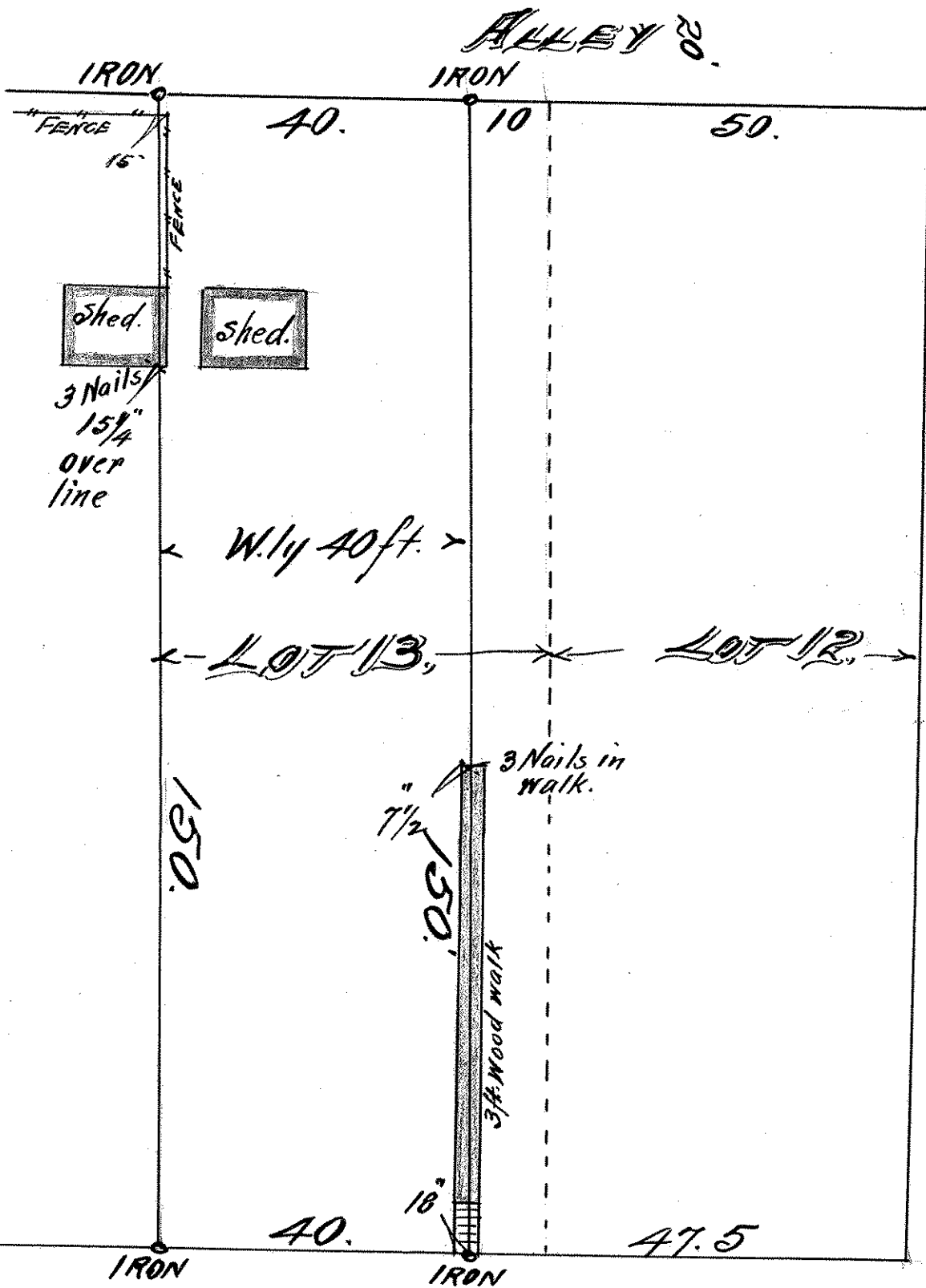
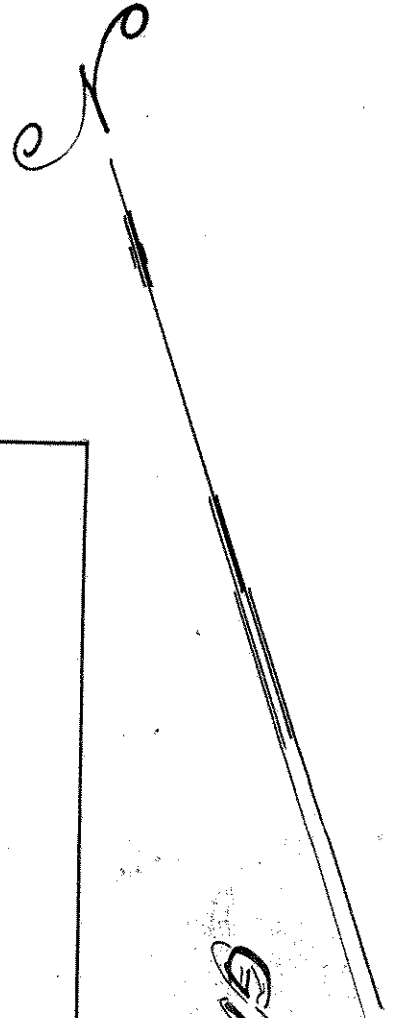
JOHN B. IRVINE, SURVEYOR.

408 GLOBE BLDG.

ST. PAUL, MINN.

OCT. 6-1911.

SCALE 20ft. per inch.



GIBBS AVE.

ALDEN PL.