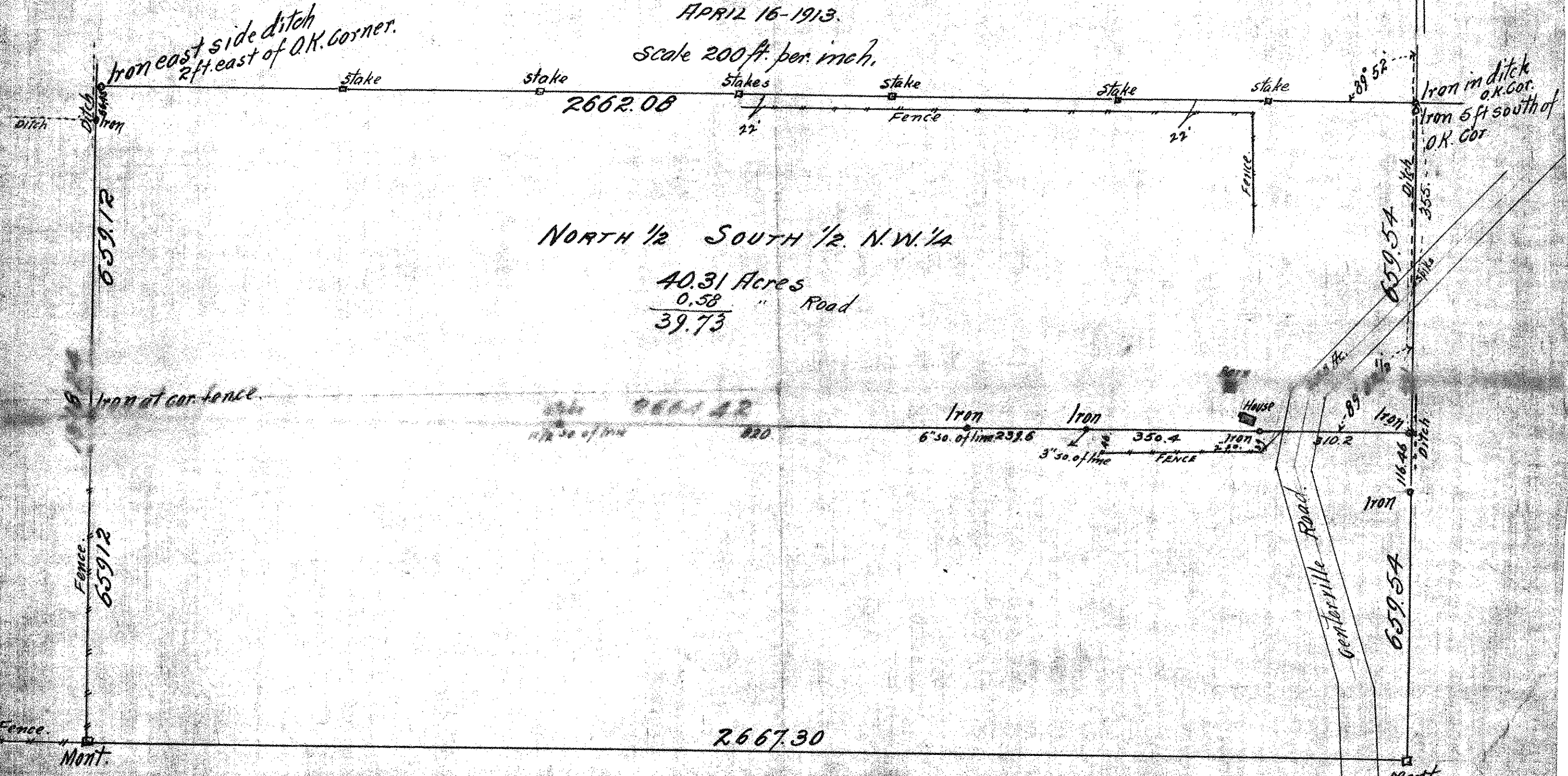


NORTH 1/2 SOUTH 1/2 NORTH WEST 1/4

SECTION 33, TOWN 30, RANGE 22,

JOHN B. IRVINE, SURVEYOR.
408 GLOBE BLDG.
ST. PAUL, MINN.
APRIL 16-1913.

Scale 200 ft. per inch.



NORTH 1/2 SOUTH 1/2 N.W. 1/4

40.31 Acres
0.58 " Road
39.73

Iron east side ditch
2 ft. east of O.K. corner.

Iron in ditch
O.K. Cor.
Iron 5 ft south of
O.K. Cor.

Iron at cor. fence.

House

Genterville Road.

2667.30

2662.08

6591.2

6591.2

659.54

659.54

6" 50. of line 238.6

3" 50. of line 350.4

510.2

1107

116.46

1107

1107

1107

1107

1107

1107

1107

1107

1107

1107

1107

1107

1107

1107

1107

1107

1107

1107

1107

1107

1107

1107