

CHARLES O. GEORGI COMPANY

2215 West County Road B

Saint Paul, Minnesota 55113

REGISTERED CIVIL ENGINEER AND LAND SURVEYOR

Certificate of Survey

I Hereby Certify that this plat shows a building location survey made by me on the property described on this plat, and that all locations, have been correctly shown.

Surveyed for: E.T. Hughes Const.

Date June 1974

Scale 1" = 30'

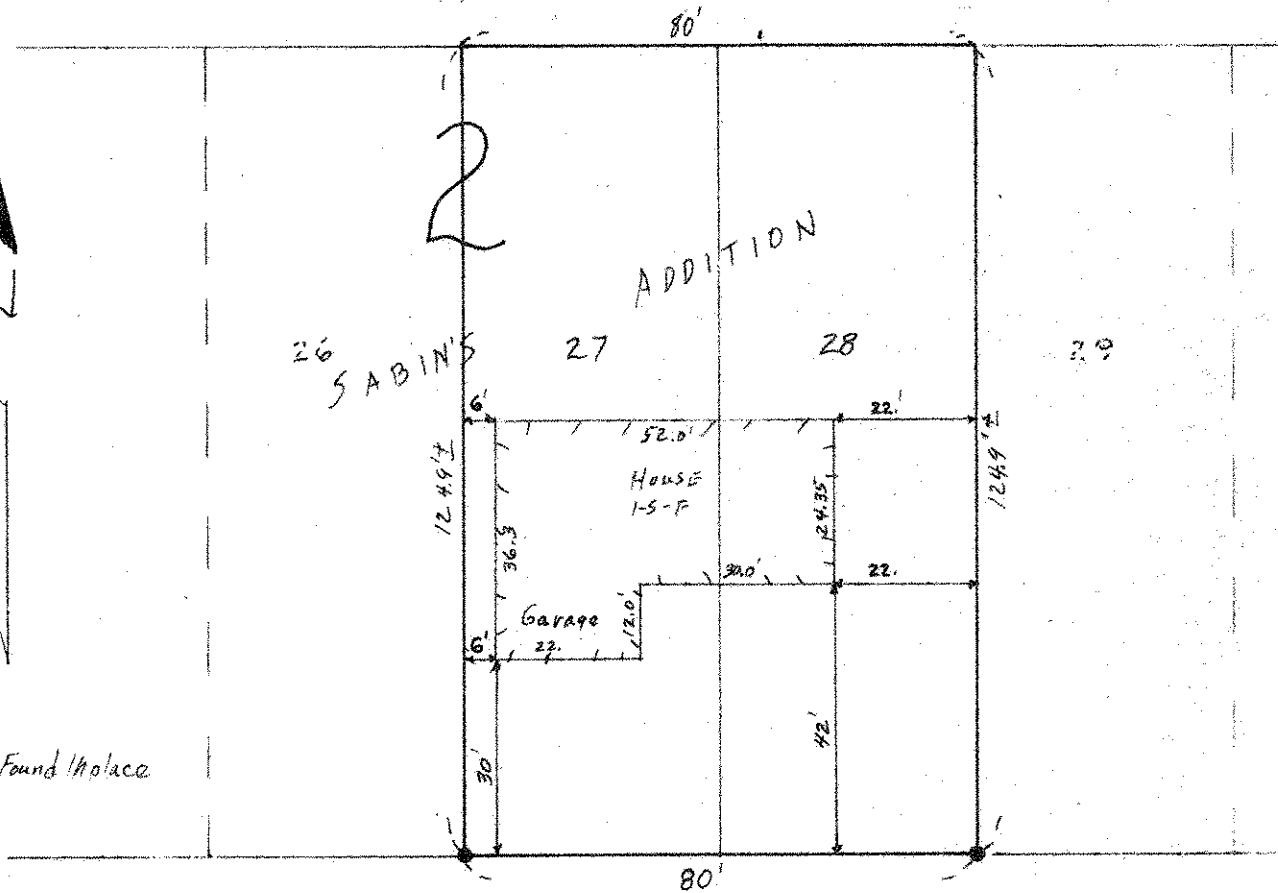
By *Charles O. Georgi*
REGISTERED LAND SURVEYOR

Description:

Lots 27 and 28, Block 2, Sabin's Addition to Gladstone

Ramsay County, Minnesota

20' Alley (Not Graded)



LARK AVE.
(FIFTH STREET)

60

60