

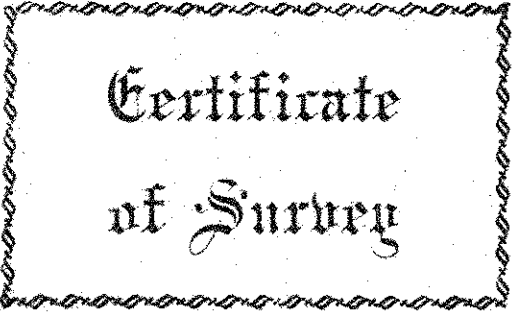
FROM THE OFFICE OF

CHARLES O. GEORGI COMPANY

2215 West County Road B

Saint Paul 13, Minnesota

REGISTERED CIVIL ENGINEER AND LAND SURVEYOR



Certificate of Survey

I Hereby Certify that this plat shows a survey made by me of the property described on this plat, and that the corners are correctly placed as shown, and that all locations have been correctly shown.

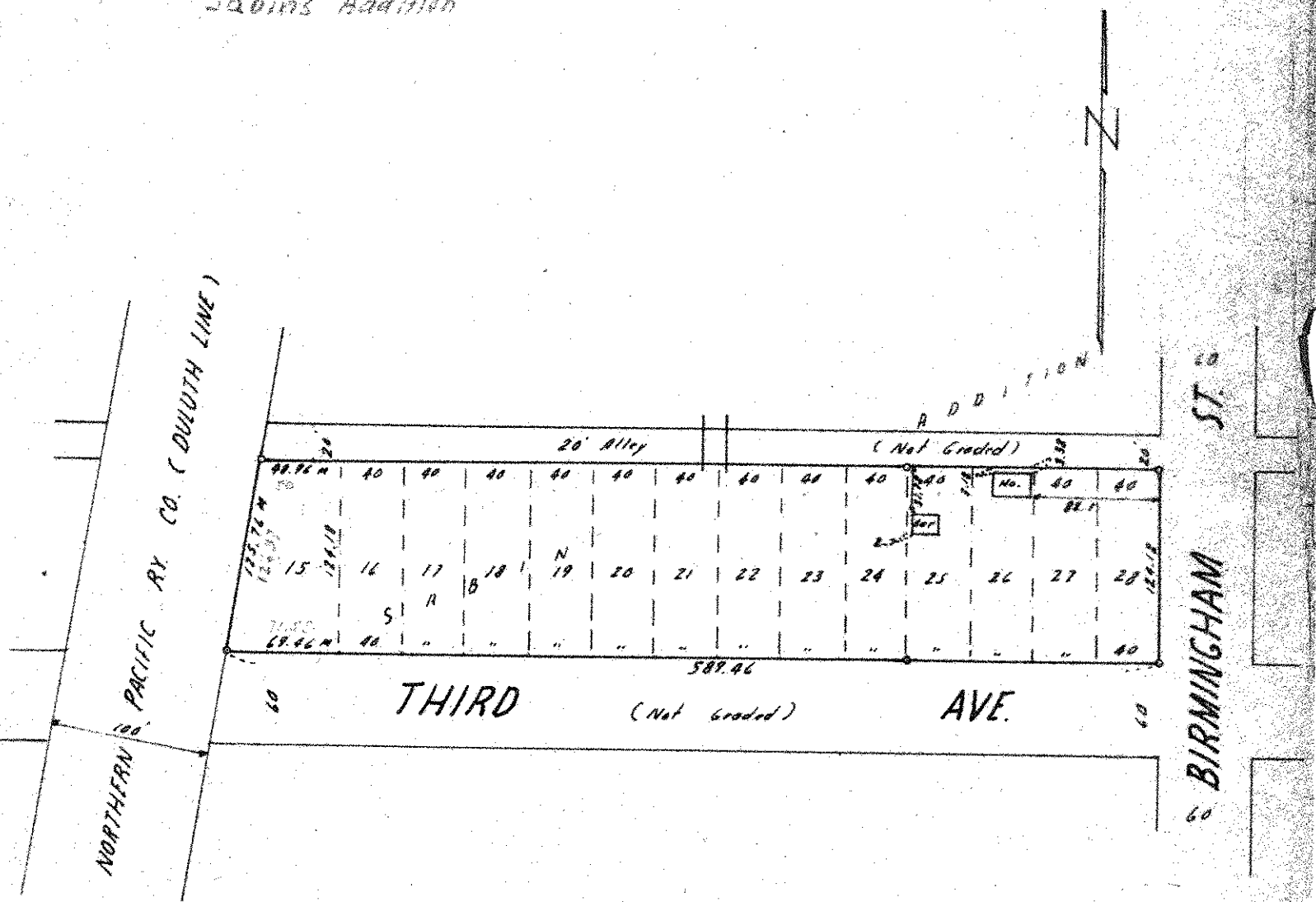
Surveyed For John Kane

Date July 1965

Scale 1" = 100'

By Charles O. Georgi
REGISTERED LAND SURVEYOR

Description: lots 15 to 28
Block 11
Sabin's Addition



o Denotes Iron Monument
m Denotes Measured Distance