

FOUND SURVEY MONUMENT EXHIBIT - County Road D

From Cleveland Avenue North to New Brighton Road

NOTES

This exhibit shows the survey monumentation found at or near the existing right of way lines prior to the construction activities on County Road D between Cleveland Avenue North and New Brighton Road along with the intersections contained within. This exhibit shows the results of a detailed survey monument search performed by the Ramsey County Surveyor's Office.

The coordinate and bearing basis for all the information shown hereon is based on the Ramsey County Coordinate System, NAD83 (2011 adj.).

The East 1/4 Corner of Sec. 32, T. 30, R. 23 (Mon. 280)

N: 191874.78
E: 550568.41

The South Witness Monument to the Center of Sec. 33, T. 30, R. 23 (Mon. 281S)

N: 191855.78
E: 553195.25

The North 1/4 Corner of Sec. 05, T. 29, R. 23 (Mon. 304)

N: 189247.64
E: 547942.19

The Northeast Corner of Sec. 05, T. 29, R. 23 (Mon. 305)

N: 189259.68
E: 550575.72

The North 1/4 Corner of Sec. 04, T. 29, R. 23 (Mon. 306)

N: 189262.33
E: 553215.14

The Northeast Corner of Sec. 04, T. 29, R. 23 (Mon. 307)

N: 189261.57
E: 555882.51

The East 1/4 Corner of Sec. 05, T. 29, R. 23 (Mon. 328)

N: 186352.35
E: 550637.75

The Center of Sec. 04, T. 29, R. 23 (Mon. 329)

N: 186384.54
E: 553272.07

Monuments were located using a VRS GPS with a Trimble R12i GNSS antenna. The location of each monument found using VRS GPS was observed by averaging two, 1 minute shots. The results of the observed coordinates are shown in the chart contained hereon.

I hereby certify that this survey, plan, or report was prepared by me or under my direct supervision and that I am a duly Licensed Land Surveyor under the laws of the state of Minnesota.

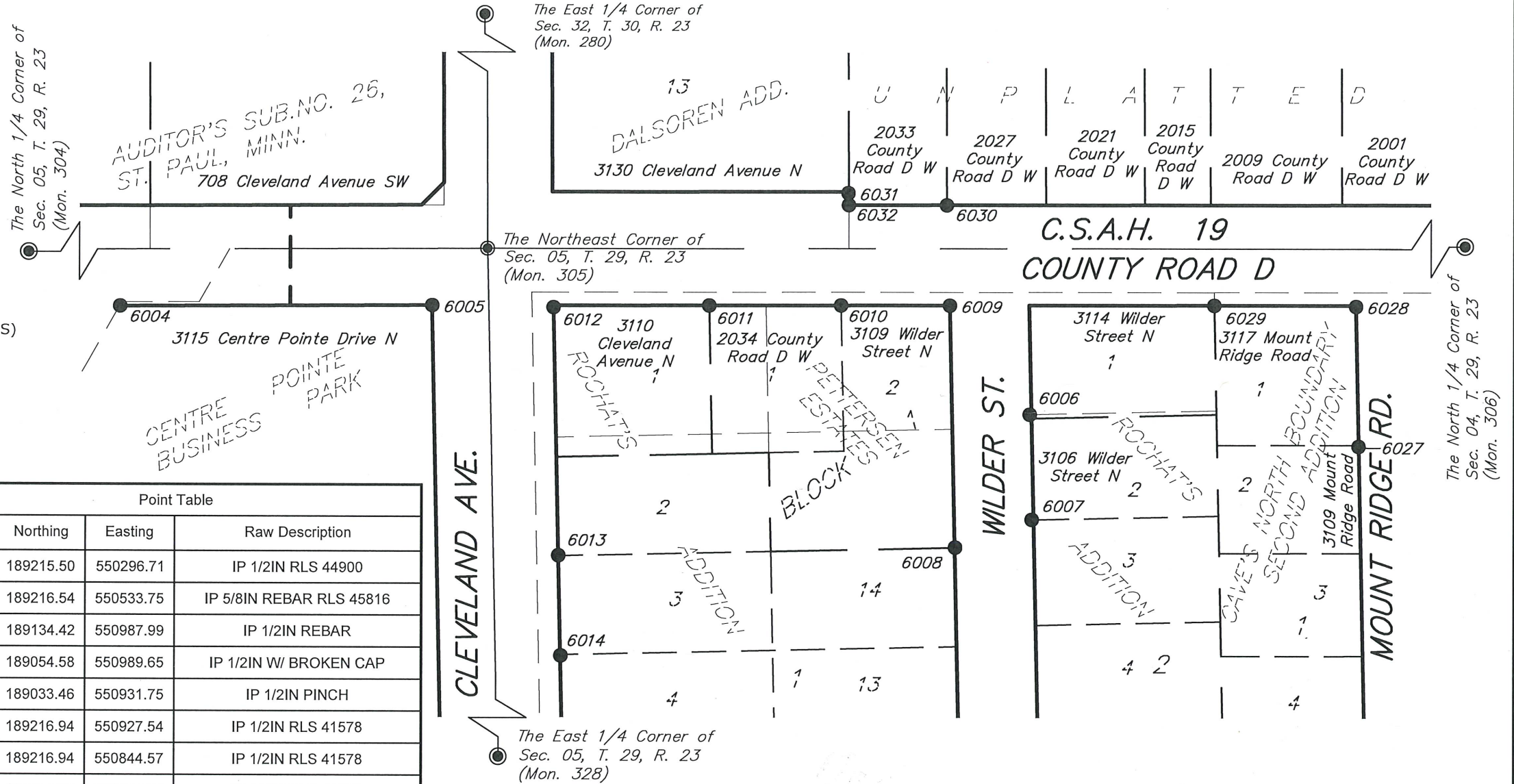
Daniel D. Baar

4/29/26

Daniel D. Baar, L.S.
Ramsey County Surveyor
Minnesota License No. 45816

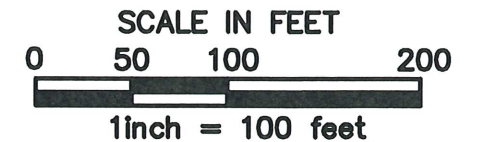
Date

Point Table			
Point #	Northing	Easting	Raw Description
6004	189215.50	550296.71	IP 1/2IN RLS 44900
6005	189216.54	550533.75	IP 5/8IN REBAR RLS 45816
6006	189134.42	550987.99	IP 1/2IN REBAR
6007	189054.58	550989.65	IP 1/2IN W/ BROKEN CAP
6008	189033.46	550931.75	IP 1/2IN PINCH
6009	189216.94	550927.54	IP 1/2IN RLS 41578
6010	189216.94	550844.57	IP 1/2IN RLS 41578
6011	189216.79	550744.53	IP 1/2IN RLS 41578
6012	189215.27	550626.08	SCRIBE X
6013	189027.08	550630.13	IP 1/2IN HORIZONTAL
6014	188951.13	550631.97	IP 3/4IN IRON ROD LEANING SW
6027	189110.46	551238.08	IP 1/2IN W/ BROKEN CAP
6028	189216.61	551235.96	IP 1/2IN W/ BROKEN CAP
6029	189217.26	551127.98	IP 1/2IN PINCH
6030	189292.99	550925.13	IP 1/2IN PINCH
6031	189302.07	550850.11	IP 1/2IN OPEN
6032	189292.96	550850.45	IP 1/2IN PINCH



LEGEND

- Denotes found monument (size, type, and Land Surveyor License Number described in table).
- ⊙ Denotes cast iron monument.
- Denotes cut granite monument.



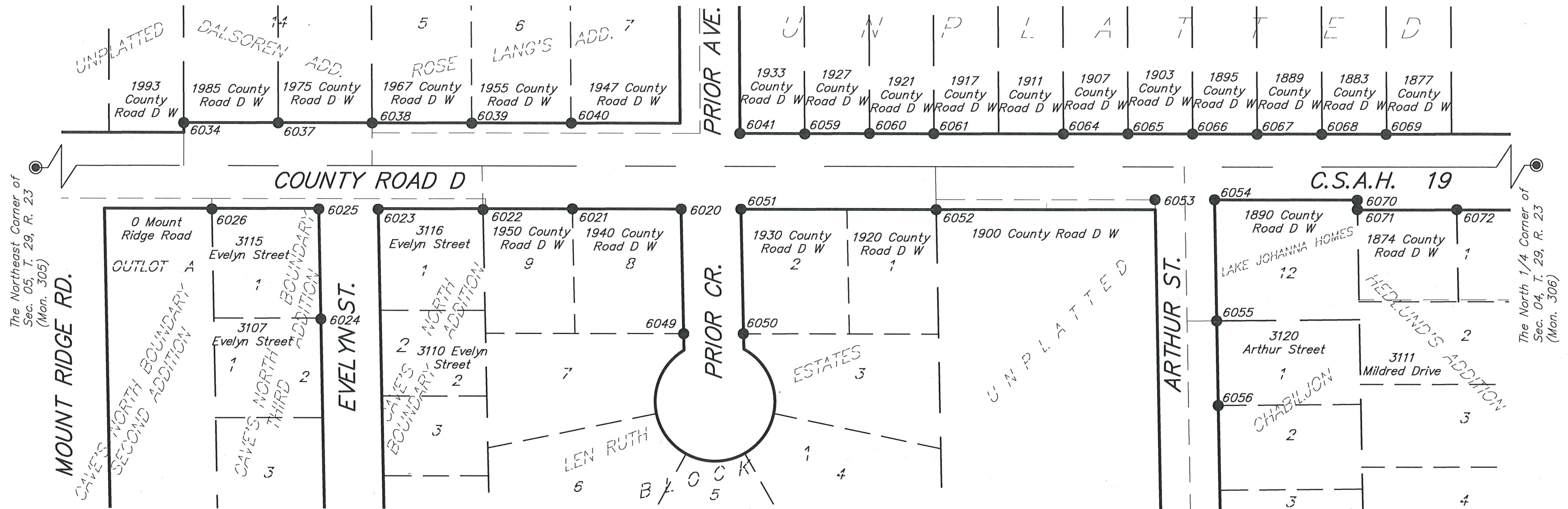
RAMSEY COUNTY PUBLIC WORKS
LAND SURVEY DIVISION
1425 PAUL KIRKWOLD DRIVE
ARDEN HILLS, MN 55112-3933
651-266-7100

Project No. 2024-021

SHEET 1 OF 3 SHEETS

FOUND SURVEY MONUMENT EXHIBIT - County Road D

From Cleveland Avenue North to New Brighton Road



The Northeast Corner of
Sec. 05, T. 29, R. 23
(Mon. 305)

The North 1/4 Corner of
Sec. 04, T. 29, R. 23
(Mon. 306)

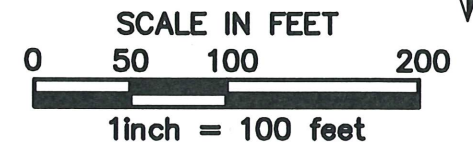
Point Table			
Point #	Northing	Easting	Raw Description
6020	189218.03	551876.32	IP 1/2IN PINCH
6021	189217.92	551766.70	IP NAIL W/ RIBBON SET IN BROKEN PIPE
6022	189216.89	551676.74	CIM
6023	189217.07	551571.52	IP 1/2IN RLS 7726
6024	189106.77	551513.87	IP 1/2IN RLS 15230
6025	189217.15	551511.60	IP 1/2IN RLS 7726
6026	189216.87	551403.80	IP 1/2IN RLS 7726
6034	189303.31	551375.24	IP 2IN PINCH
6037	189303.47	551470.57	IP 1/2IN RLS UNREADABLE
6038	189303.56	551565.35	IP METALROD W/ METALCAP RLS 7096
6039	189303.52	551665.34	IP ALUMINUM 3/4IN PINCH
6040	189303.89	551765.52	IP 3/4IN W/ SMASHED TOP

Point Table			
Point #	Northing	Easting	Raw Description
6041	189293.96	551935.10	IP 1/2IN OPEN
6049	189093.05	551879.04	IP 3/4IN PINCH
6050	189093.20	551938.79	IP 3/4IN OPEN
6051	189218.06	551936.18	IP 3/4IN PINCH
6052	189218.10	552132.56	IP 1/2IN RLS 44530
6053	189228.61	552352.37	IP1/2IN RLS 4987
6054	189228.64	552412.41	IP 3/4IN PINCH
6055	189107.17	552414.72	IP 3/4IN PINCH
6056	189022.19	552416.43	IP 1/2IN PINCH
6059	189293.67	552000.18	IP 1.5IN METALPIPE
6060	189294.34	552065.16	IP 3/4IN OPEN
6061	189294.31	552130.10	IP 3/4IN OPEN W/ SMASHED TOP

Point Table			
Point #	Northing	Easting	Raw Description
6064	189294.31	552260.12	IP 1/2IN OPEN
6065	189294.54	552325.14	IP 5/8IN REBAR RLS 18407
6066	189294.47	552390.10	IP 1/2IN OPEN
6067	189294.41	552455.14	IP 3/4IN OPEN
6068	189294.51	552519.96	IP 1/2IN OPEN
6069	189294.51	552584.66	IP 1/2IN OPEN
6070	189228.53	552555.71	IP 3/4IN PINCH
6071	189219.10	552555.80	IP 1/2IN RLS 11529
6072	189219.21	552655.57	IP 1/2IN RLS 11529

LEGEND

- Denotes found monument (size, type, and Land Surveyor License Number described in table).
- ⊙ Denotes cast iron monument.
- Denotes cut granite monument.



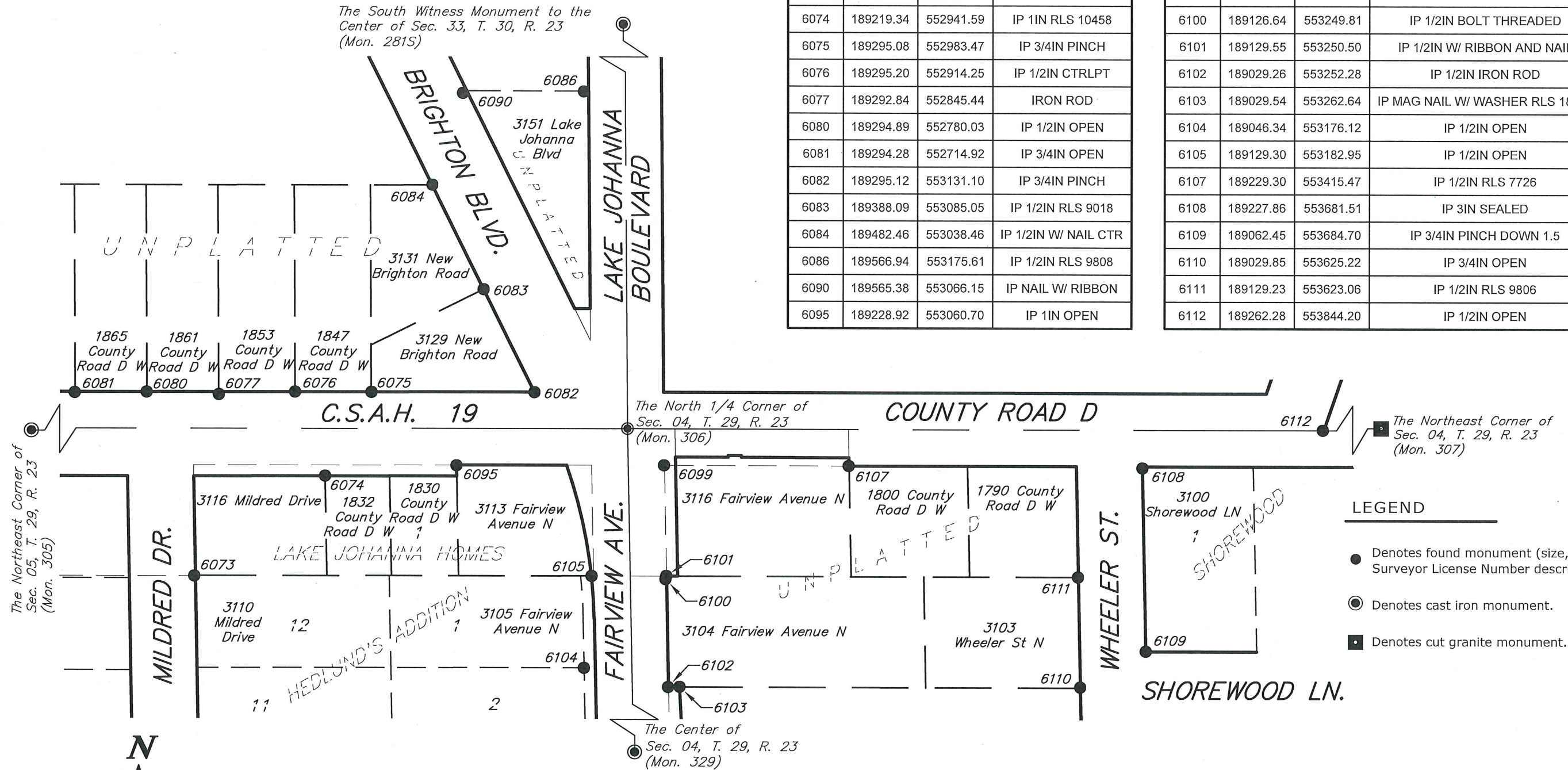
RAMSEY COUNTY PUBLIC WORKS
LAND SURVEY DIVISION
 1425 PAUL KIRKWOLD DRIVE
 ARDEN HILLS, MN 55112-3933
 651-266-7100

FOUND SURVEY MONUMENT EXHIBIT - County Road D

From Cleveland Avenue North to New Brighton Road

Point Table			
Point #	Northing	Easting	Raw Description
6073	189128.92	552823.50	IP 1/2IN REBAR
6074	189219.34	552941.59	IP 1IN RLS 10458
6075	189295.08	552983.47	IP 3/4IN PINCH
6076	189295.20	552914.25	IP 1/2IN CTRLPT
6077	189292.84	552845.44	IRON ROD
6080	189294.89	552780.03	IP 1/2IN OPEN
6081	189294.28	552714.92	IP 3/4IN OPEN
6082	189295.12	553131.10	IP 3/4IN PINCH
6083	189388.09	553085.05	IP 1/2IN RLS 9018
6084	189482.46	553038.46	IP 1/2IN W/ NAIL CTR
6086	189566.94	553175.61	IP 1/2IN RLS 9808
6090	189565.38	553066.15	IP NAIL W/ RIBBON
6095	189228.92	553060.70	IP 1IN OPEN

Point Table			
Point #	Northing	Easting	Raw Description
6099	189229.41	553248.35	IP 1/2IN RLS 41578
6100	189126.64	553249.81	IP 1/2IN BOLT THREADED
6101	189129.55	553250.50	IP 1/2IN W/ RIBBON AND NAIL
6102	189029.26	553252.28	IP 1/2IN IRON ROD
6103	189029.54	553262.64	IP MAG NAIL W/ WASHER RLS 18407
6104	189046.34	553176.12	IP 1/2IN OPEN
6105	189129.30	553182.95	IP 1/2IN OPEN
6107	189229.30	553415.47	IP 1/2IN RLS 7726
6108	189227.86	553681.51	IP 3IN SEALED
6109	189062.45	553684.70	IP 3/4IN PINCH DOWN 1.5
6110	189029.85	553625.22	IP 3/4IN OPEN
6111	189129.23	553623.06	IP 1/2IN RLS 9806
6112	189262.28	553844.20	IP 1/2IN OPEN



LEGEND

- Denotes found monument (size, type, and Land Surveyor License Number described in table).
- ⊙ Denotes cast iron monument.
- Denotes cut granite monument.

RAMSEY COUNTY PUBLIC WORKS
LAND SURVEY DIVISION
 1425 PAUL KIRKWOLD DRIVE
 ARDEN HILLS, MN 55112-3933
 651-266-7100