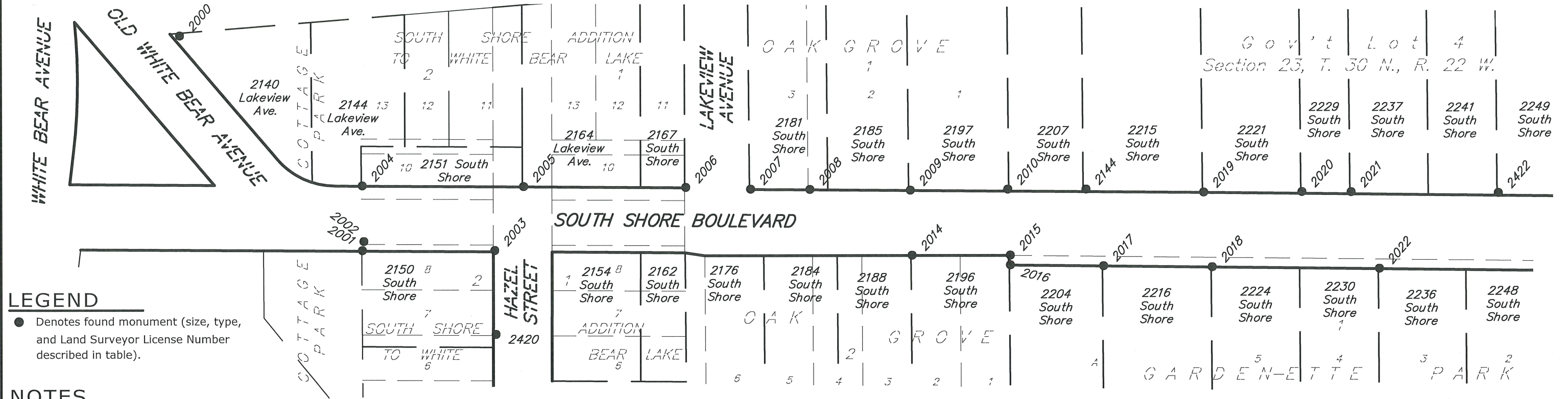


FOUND SURVEY MONUMENT EXHIBIT - South Shore Boulevard

From White Bear Avenue to East County Line Road North



LEGEND
 ● Denotes found monument (size, type, and Land Surveyor License Number described in table).

NOTES

This exhibit shows the survey monumentation found at or near the existing right of way lines prior to the reconstruction of South Shore Boulevard from White Bear Avenue to East County Line Road, along with the intersections contained within. This exhibit shows the results of a detailed survey monument search performed by the Ramsey County Surveyor's Office. The coordinate and bearing basis for all the information shown hereon is based on the Ramsey County Coordinate System, NAD83 (2011 adj.) Monuments were located using a conventional total station with robotic functions and VRS GPS with a Trimble R12i GNSS antenna. The location of each monument found using VRS GPS was observed by averaging two, 1 minute shots. The results of the observed coordinates are shown in the chart contained hereon.

The Witness Corner on the North-South Quarter Line of Sec. 23, T. 30, R. 22 (Mon. 197N)
 N: 203264.23
 E: 595053.81

The South 1/4 Corner of Sec. 23, T. 30, R. 22 (Mon. 222)
 N: 199972.06
 E: 595069.28

The North Witness Corner to the SE Corner of Sec. 23, T. 30, R. 22 (Mon. 223N)
 N: 200003.37
 E: 597712.74

The West Witness Corner to the SE Corner of Sec. 23, T. 30, R. 22 (Mon. 223W)
 N: 199970.45
 E: 597680.02

The South Witness Corner to Meander Corner No. 5 Sec. 23, T. 30, R. 22 (Mon. 223NWC)
 N: 201945.02
 E: 597696.23

Meander Corner No. 6 Sec. 24, T. 30, R. 22 (Mon. 225N)
 N: 200381.46
 E: 602979.94

The South 1/4 Corner of Sec. 24, T. 30, R. 22 (Mon. 224)
 N: 199994.91
 E: 600349.27

The Witness Corner on the North-South Quarter Line and to the Center of Sec. 24, T. 30, R. 22 (Mon. 224N)
 N: 202194.76
 E: 600339.60

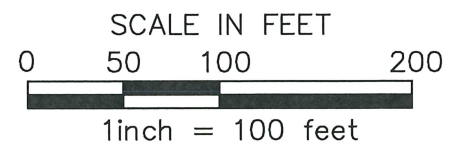
The SE Corner of Sec. 24, T. 30, R. 22 (Mon. 225)
 N: 200011.46
 E: 602978.85

I hereby certify that this survey, plan, or report was prepared by me or under my direct supervision and that I am a duly Licensed Land Surveyor under the laws of the state of Minnesota.

Daniel D. Baar 10/8/24
 Daniel D. Baar, L.S. Date
 County Surveyor
 Minnesota License No. 45816

Point Table			
Point #	Northing	Easting	Description
2000	201906.14	596194.53	RLS 15612
2001	201688.09	596380.28	1 IN OD ROD
2002	201697.34	596381.82	5/8 IN ROD IN TIRE RIM
2003	201688.12	596515.15	1/2 IN PINCH TOP
2004	201753.84	596380.27	3/4 IN OPEN
2005	201753.01	596544.89	JLM RLS 16099 ALUMINUM DISK
2006	201751.89	596709.77	JLM RLS 16099 ALUMINUM DISK
2007	201750.05	596775.81	3/4 IN OPEN BRKN TOP
2008	201749.68	596836.42	1/2 IN PINCH TOP
2009	201748.83	596938.41	ROD AND BOLT WITHIN 2 IN
2010	201749.78	597037.70	1 IN FILLED WITH CONCRETE
2014	201682.84	596940.15	PINCHTOP WITHIN 2 IN OD PIPE

Point Table			
Point #	Northing	Easting	Description
2015	201682.87	597040.20	PINCHTOP WITHIN OD 2IN PIPE
2016	201672.95	597040.29	1 IN FILLED WITH CONCRETE
2017	201671.95	597135.30	1 IN OPEN
2018	201670.84	597245.58	3/4 IN OPEN
2019	201746.70	597237.03	1/2 IN OPEN
2020	201747.02	597336.96	1/2 IN OPEN LEANING WEST STRAIGHTEND
2021	201746.87	597387.07	PINCHTOP
2022	201669.18	597415.88	17551
2144	201749.80	597117.40	3/4 INCH UNDER CONC SHOT CONC
2420	201602.90	596516.34	RR RAIL CHISELED X
2422	201746.03	597537.07	PINCHTOP



RAMSEY COUNTY PUBLIC WORKS
LAND SURVEY DIVISION
 1425 PAUL KIRKWOLD DRIVE
 ARDEN HILLS, MN 55112-3933
 651-266-7100

FOUND SURVEY MONUMENT EXHIBIT - South Shore Boulevard

From White Bear Avenue to East County Line Road North

Witness Monument to Meander Corner No. 5
Sec. 23, T. 30, R. 22
(Mon. 223NWC)

Gov't Lot 1
Section 24
T.30N., R.22W.

Point Table			
Point #	Northing	Easting	Description
2050	201596.93	598961.17	PINCH TOP
2148	201526.12	597732.91	PINCHTOP
2149	201503.08	598006.50	1 1/2 INCH OPEN
2150	201523.75	598119.30	15480
2151	201501.31	598166.71	47223 FMA
2152	201507.70	598151.61	METRO CONTROL
2153	201480.94	598247.22	1 1/2 LEANING NLY STRAIGHTENED
2154	201479.32	598437.09	PINCH TOP LEANING WLY STRAIGHTENED
2155	201497.04	598519.65	PINCH TOP DOWN 1.2 FEET

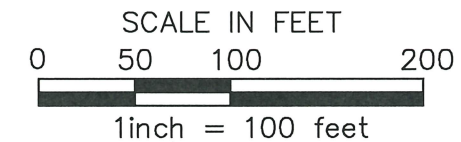
Point Table			
Point #	Northing	Easting	Description
2156	201540.02	598683.90	3/4 IN SOLID IRON WROUNDED TOP
2157	201558.75	598759.61	1 1/2 INCH OPEN DOWN 1.2 FEET
2158	201502.64	598813.57	1 1/2 IN OPEN

North Witness Monument to the Northwest Corner
Sec. 25, T. 30, R. 22
(Mon. 223N)

Point Table			
Point #	Northing	Easting	Description
2023	201742.73	597617.44	17551
2024	201742.02	597697.95	3/8 IN CONC
2025	201667.24	597586.01	3/4 IN OPEN
2026	201646.89	597731.89	PINCH TOP
2027	201665.36	597750.09	1 1/2 IN OPEN
2028	201665.41	597750.32	PINCH TOP
2029	201613.89	597889.35	PINCH TOP IN CONC
2030	201667.37	597958.51	PINCH TOP
2031	201663.33	597965.76	1 1/2 IN OPEN FILLED W CONC
2032	201617.99	598015.74	3/4 IN OPEN
2033	201565.22	598066.86	1 1/2 IN PINCH TOP
2035	201426.08	598119.55	REBAR IN CONC
2036	201427.44	598120.03	PINCH TOP BENT WEST SHOT AT
2037	201395.98	598235.92	PINCH TOP

Point Table			
Point #	Northing	Easting	Description
2038	201399.92	598330.86	23266
2039	201481.44	598240.67	1 1/2 LEANING NORTH STRAIGHT
2040	201476.08	598330.20	IREG 1 1/2 SOLID IRON
2041	201430.64	598521.47	1 1/2 IN
2042	201454.77	598618.48	1 1/2 IN
2043	201478.88	598415.64	1 1/2 IN OPEN
2044	201482.30	598450.01	23266
2045	201547.31	598707.59	1 1/2 BENT NORTH SHOT AT BEND
2046	201571.50	598821.09	19168

Gov't Lot 1
Section 24
T.30N., R.22W.



LEGEND

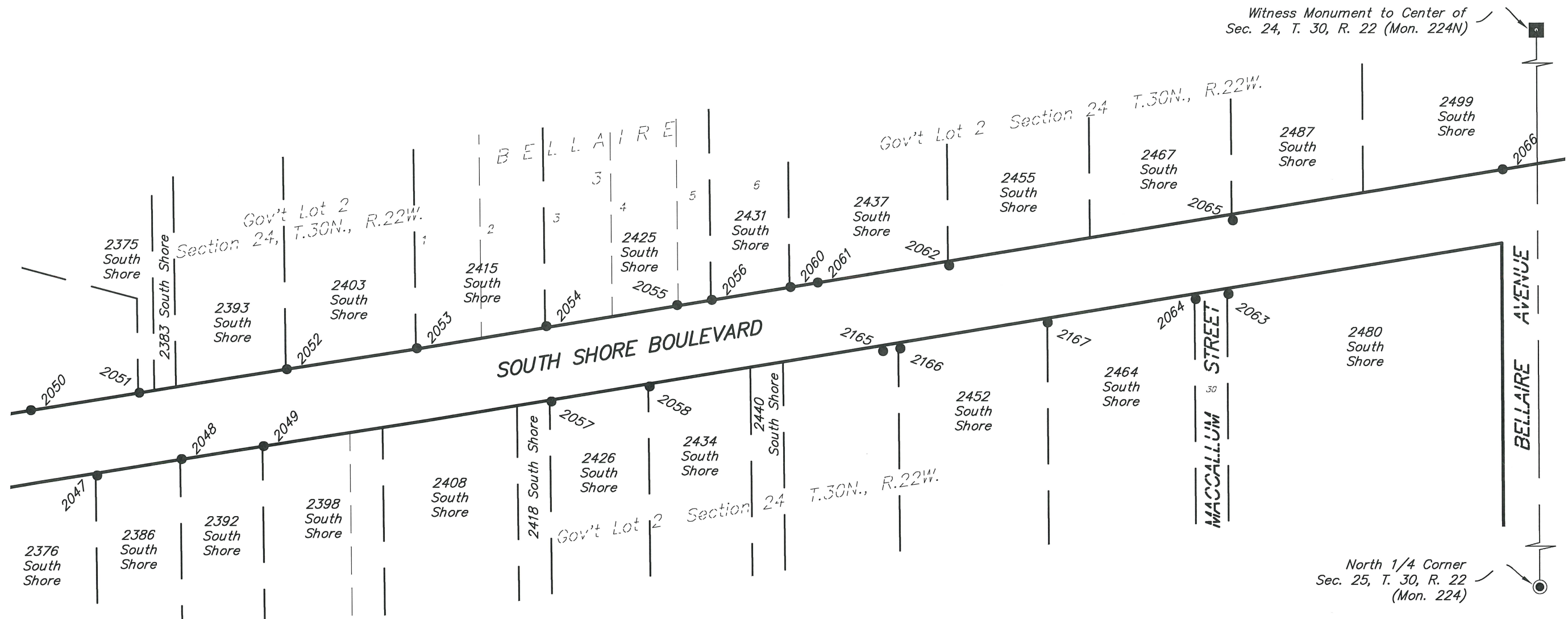
- Denotes found monument (size, type, and Land Surveyor License Number described in table).
- ⊙ Denotes cast iron monument.
- Denotes granite monument.

RAMSEY COUNTY PUBLIC WORKS
LAND SURVEY DIVISION
 1425 PAUL KIRKWOLD DRIVE
 ARDEN HILLS, MN 55112-3933
 651-266-7100

Project No. 2018-027

FOUND SURVEY MONUMENT EXHIBIT - South Shore Boulevard

From White Bear Avenue to East County Line Road North

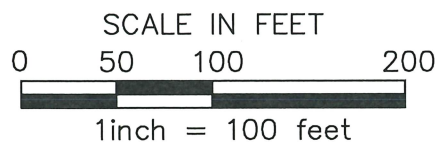


Point Table			
Point #	Northing	Easting	Description
2047	201537.09	599021.38	1 1/2 UP .8
2048	201551.72	599099.24	4987
2049	201563.18	599174.16	BROKEN CAP
2050	201596.93	598961.17	PINCH TOP
2051	201612.40	599060.60	1 1/2 OPEN
2052	201633.30	599195.67	BROKEN CAP
2053	201651.94	599314.85	1 1/2 OPEN
2054	201671.79	599433.45	3/4 OPEN
2055	201690.69	599552.90	1 1/2 BENT SW SHOT AT BEND
2056	201695.34	599584.55	9808
2057	201603.03	599437.78	3/4 IN OPEN

Point Table			
Point #	Northing	Easting	Description
2058	201616.50	599527.46	1 1/2 IN OPEN
2060	201706.99	599656.52	1 1/2 IN OPEN
2061	201711.04	599681.61	3/4 IN WITH SPIKE
2062	201726.38	599801.61	PINCH TOP
2063	201700.02	600057.25	1 1/2 OPEN
2064	201695.33	600027.21	RLS 17551
2065	201767.17	600061.37	PINCH TOP
2066	201813.26	600308.35	3/8 IN REBAR
2165	201648.41	599741.20	3527
2166	201650.79	599756.88	1 1/2 INCH OPEN
2167	201674.17	599891.60	17551

LEGEND

- Denotes found monument (size, type, and Land Surveyor License Number described in table).
- ⊙ Denotes cast iron monument.
- Denotes granite monument.



RAMSEY COUNTY PUBLIC WORKS
LAND SURVEY DIVISION
 1425 PAUL KIRKWOLD DRIVE
 ARDEN HILLS, MN 55112-3933
 651-266-7100

FOUND SURVEY MONUMENT EXHIBIT - South Shore Boulevard

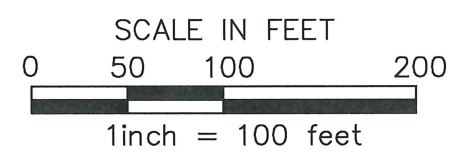
From White Bear Avenue to East County Line Road North



Point Table			
Point #	Northing	Easting	Description
2089	201533.62	601153.13	1 1/2 IN OPEN
2090	201529.56	601182.62	RLS 17551
2091	201519.81	601251.96	1 IN OPEN
2092	201512.88	601301.52	PINCH TOP
2093	201520.92	601692.34	1 1/2 IN OPEN
2094	201492.82	601451.56	3/8 IN OPEN WITHIN 1 IN
2095	201483.60	601514.07	1 IN OPEN
2096	201468.67	601621.63	14945
2097	201461.17	601675.36	1 1/2 IN OPEN
2168	201556.08	600375.96	5/8 IN OPEN SQUISHED

Point Table			
Point #	Northing	Easting	Description
2067	201744.16	600374.19	BROKEN CAP LEANING NORTHERLY STRAIGHTENED
2068	201755.67	600424.80	1 1/2 OPEN DOWN 1 FOOT
2069	201772.51	600524.63	RR SPIKE
2070	201834.47	600492.23	41578
2071	201838.72	600540.57	41578
2072	201860.54	600593.00	1 1 1/4 IN ROD
2073	201732.38	600691.49	3/4 IN OPEN
2074	201686.57	600777.36	3/4 OD
2075	201638.31	600864.89	3/4 IN FILLED W/CONC
2076	201614.08	600908.63	1 1/2 IN OPEN
2077	201589.59	600952.40	1 1/2 IN OPEN SLIGHT LEAN WEST

Point Table			
Point #	Northing	Easting	Description
2078	201540.54	601103.47	1 1 1/4 IN OPEN
2079	201690.29	600909.75	PINCH TOP DISTURBED
2080	201755.90	600449.23	17551
2081	201615.03	601085.20	1 IN ROD
2082	201635.33	601018.97	1 1/2 IN OPEN IN CONC
2083	201661.18	600963.24	1 1/2 IN OPEN
2084	201583.44	601216.78	1 1/2 IN OPEN
2085	201581.75	601277.18	1 1/2 IN OPEN
2086	201567.37	601376.18	1 1/2 IN OPEN
2087	201555.76	601455.18	BROKEN CAP
2088	201538.84	601573.60	RLS 23677



LEGEND

- Denotes found monument (size, type, and Land Surveyor License Number described in table).

RAMSEY COUNTY PUBLIC WORKS
LAND SURVEY DIVISION
 1425 PAUL KIRKWOLD DRIVE
 ARDEN HILLS, MN 55112-3933
 651-266-7100

Project No. 2018-027

FOUND SURVEY MONUMENT EXHIBIT - South Shore Boulevard

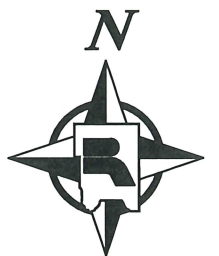
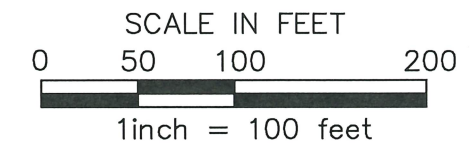
From White Bear Avenue to East County Line Road North



Point Table			
Point #	Northing	Easting	Description
2098	201451.02	601747.56	1 IN OPEN
2099	201427.74	601812.90	19522
2100	201501.14	601820.90	PK Nail
2101	201487.00	601862.37	PK Nail
2102	201450.93	601914.61	41578
2103	201409.62	601956.25	3/8 IN REBAR
2104	201403.51	601952.97	METRO 17765
2105	201235.80	602043.50	1 IN OPEN WITH MAG IN
2106	201138.87	602013.67	1/2 IN OPEN
2107	201094.23	602036.16	1/2 IN OPEN
2108	201185.08	602066.04	1/2 IN OPEN
2109	201131.29	602095.55	1/2 IN OPEN
2110	201081.89	602128.94	1/2 IN OPEN
2111	201034.59	602165.75	25344
2112	201013.38	602093.55	3/4 IN OPEN
2113	200945.51	602152.96	1/2 IN OPEN
2114	200871.66	602354.90	22414
2115	200784.70	602463.99	3/4 IN OPEN
2116	200800.31	602349.33	17751
2117	200814.91	602329.86	1/2 IN OPEN LEANING NORTH STRAIGHTEND
2118	200742.45	602419.74	1/2 IN OPEN
2119	200740.13	602418.60	PINCH TOP

LEGEND

- Denotes found monument (size, type, and Land Surveyor License Number described in table).
- Denotes found PK or mag nail.



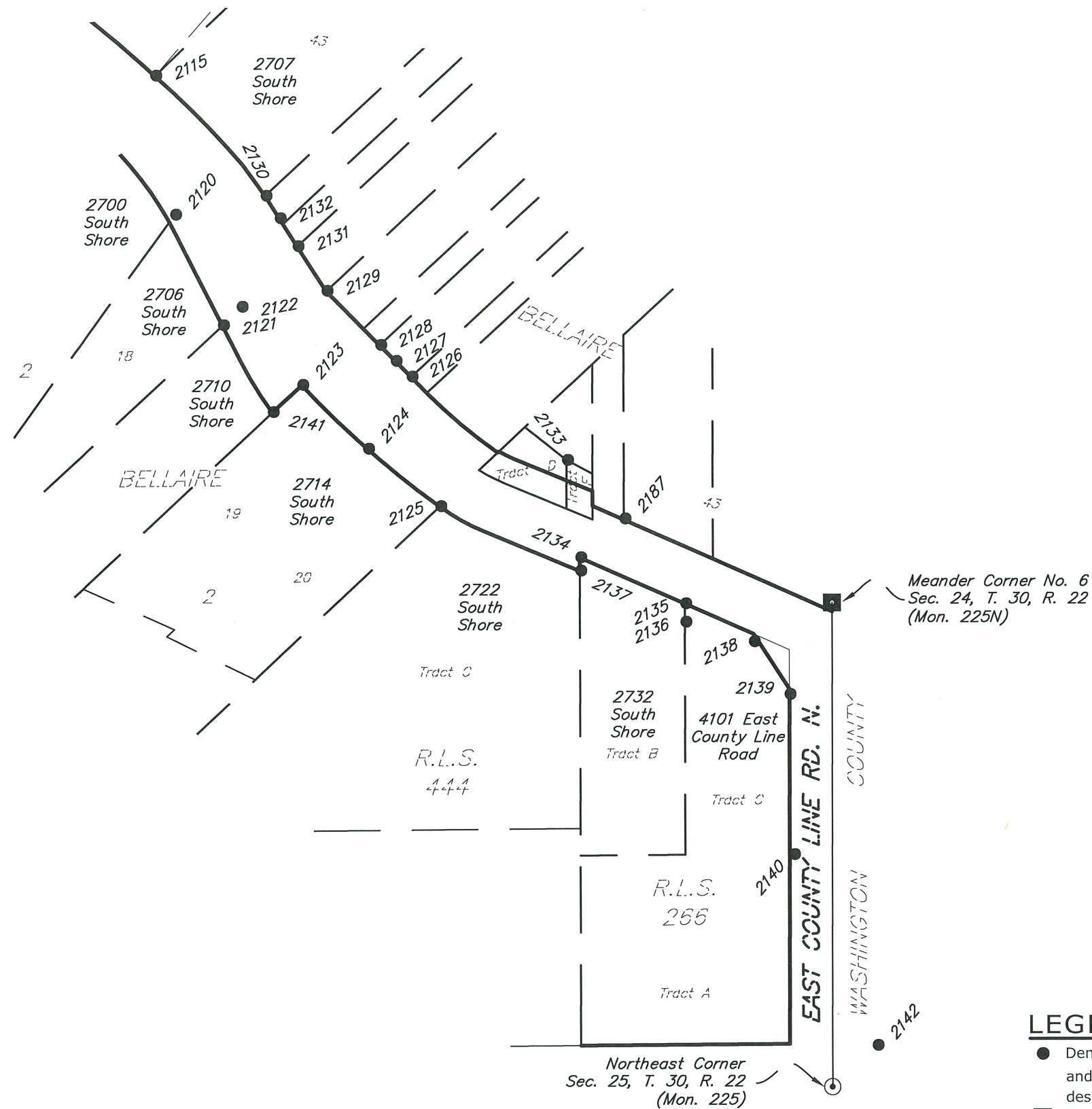
RAMSEY COUNTY PUBLIC WORKS
LAND SURVEY DIVISION
 1425 PAUL KIRKWOLD DRIVE
 ARDEN HILLS, MN 55112-3933
 651-266-7100

Project No. 2018-027

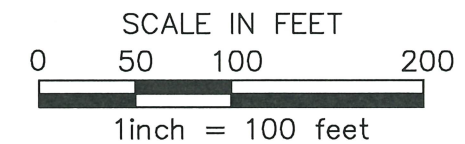
SHEET 5 OF 6 SHEETS

FOUND SURVEY MONUMENT EXHIBIT - South Shore Boulevard

From White Bear Avenue to East County Line Road North



Point Table			
Point #	Northing	Easting	Description
2120	200678.59	602478.42	RLS 3527
2121	200594.12	602514.42	1 1/2 IN OPEN
2122	200608.10	602528.83	3527
2123	200548.35	602575.06	855
2124	200499.39	602624.98	1 1/2 IN OPEN
2125	200455.31	602680.18	1 1/2 IN OPEN
2126	200554.40	602658.80	3527
2127	200566.37	602646.59	3527
2128	200578.61	602634.70	1 1/2 IN OPEN
2129	200619.99	602594.10	BROKEN CAP
2130	200692.67	602547.80	17551
2131	200654.19	602572.14	175? BROKEN CAP
2132	200675.57	602558.56	17551
2133	200490.40	602777.26	823? BROKEN CAP STRAIGHTENED
2134	200416.06	602787.04	41578
2135	200380.68	602866.91	41578
2136	200366.60	602867.00	8612
2137	200405.84	602786.94	9232
2138	200351.56	602919.26	5065
2139	200311.30	602946.41	1 1/2 IN OPEN
2140	200189.08	602949.28	1 1/2 IN OPEN
2141	200527.62	602552.28	1 1/2 OPEN
2142	200043.09	603013.33	1 1 1/2 SOLID IRON IN CONC
2187	200445.50	602821.00	REBAR 1 1/2 INCH?



LEGEND

- Denotes found monument (size, type, and Land Surveyor License Number described in table).
- Denotes granite monument.
- Denotes survey marker with washer.

RAMSEY COUNTY PUBLIC WORKS
LAND SURVEY DIVISION
 1425 PAUL KIRKWOLD DRIVE
 ARDEN HILLS, MN 55112-3933
 651-266-7100

Project No. 2018-027

SHEET 6 OF 6 SHEETS