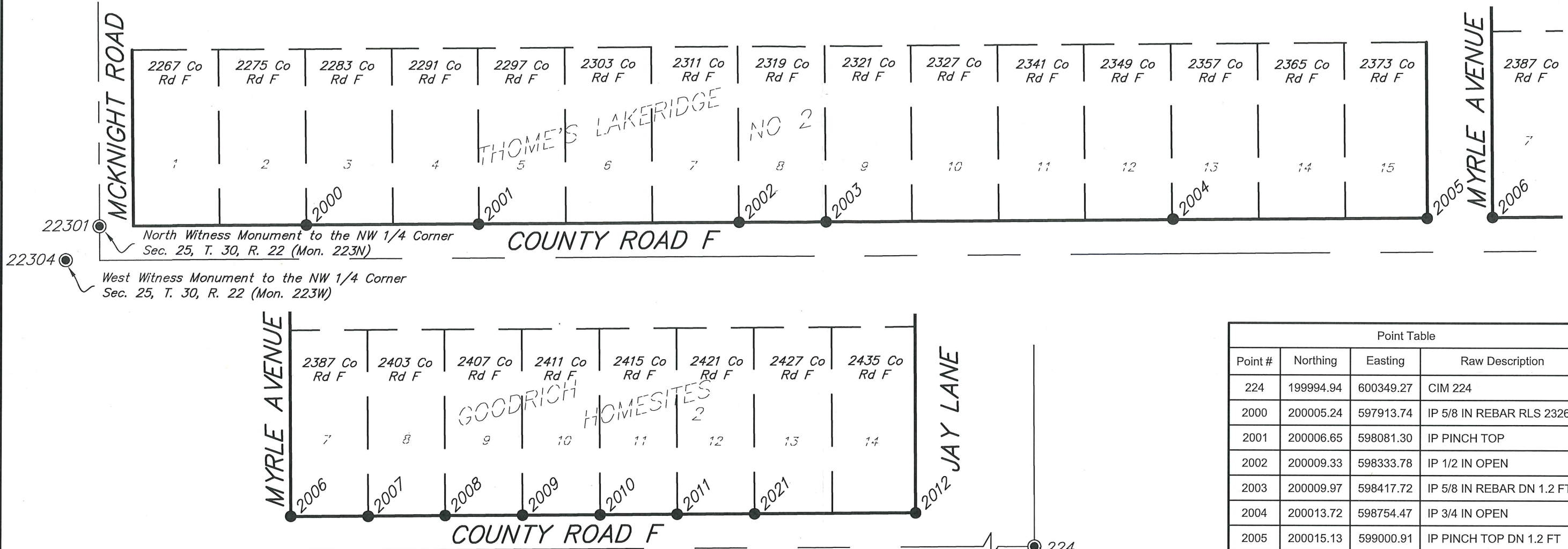


FOUND SURVEY MONUMENT EXHIBIT - County Road F

From McKnight Road to Jay Lane



Point Table			
Point #	Northing	Easting	Raw Description
224	199994.94	600349.27	CIM 224
2000	200005.24	597913.74	IP 5/8 IN REBAR RLS 23266
2001	200006.65	598081.30	IP PINCH TOP
2002	200009.33	598333.78	IP 1/2 IN OPEN
2003	200009.97	598417.72	IP 5/8 IN REBAR DN 1.2 FT
2004	200013.72	598754.47	IP 3/4 IN OPEN
2005	200015.13	599000.91	IP PINCH TOP DN 1.2 FT
2006	200016.14	599064.02	IP 1/2 IN OPEN
2007	200016.47	599138.99	IP 1/2 IN OPEN
2008	200017.39	599213.90	IP RLS 4427
2009	200018.09	599288.94	IP RLS 3560
2010	200018.67	599363.92	IP PINCH TOP
2011	200019.46	599438.83	IP PINCH TOP
2012	200021.54	599670.11	IP 1/2 IN OPEN
2021	200020.14	599513.86	IP 1/2 IN OPEN
22301	200003.37	597712.74	CIM 223N
22304	199970.45	597680.02	CIM 223W

NOTES

This exhibit shows the survey monumentation found at or near the existing right of way lines prior to the construction activities on County Road F between McKnight Road and Jay Lane along with the intersections contained within. This exhibit shows the results of a detailed survey monument search performed by the Ramsey County Surveyor's Office.

The coordinate and bearing basis for all the information shown hereon is based on the Ramsey County Coordinate System, NAD83 (2011 adj.).

The North Witness Monument to the NW 1/4 Corner of Sec. 25, T. 30, R. 22 (Mon. 223N)

N: 200003.37
E: 597712.74

The West Witness Monument to the NW 1/4 Corner of Sec. 25, T. 30, R. 22 (Mon. 223W)

N: 199970.45
E: 597680.02

The North 1/4 Corner of Sec. 25, T. 30, R. 22 (Mon. 224)

N: 199994.94
E: 600349.27

Monuments were located using a conventional total station with robotic functions and VRS GPS with a Trimble R12i GNSS antenna. The location of each monument found using VRS GPS was observed by averaging two, 1 minute shots. The results of the observed coordinates are shown in the chart contained hereon.

LEGEND

- Denotes found monument (size, type, and Land Surveyor License Number described in table).
- ⊙ Denotes Ramsey County cast iron monument.

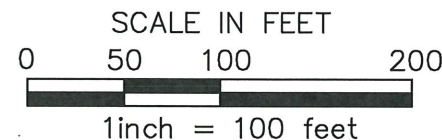
I hereby certify that this survey, plan, or report was prepared by me or under my direct supervision and that I am a duly Licensed Land Surveyor under the laws of the state of Minnesota.

Daniel D. Baar

Daniel D. Baar, L.S.
Ramsey County Surveyor
Minnesota License No. 45816

12/14/23

Date



RAMSEY COUNTY PUBLIC WORKS
LAND SURVEY DIVISION
1425 PAUL KIRKWOOD DRIVE
ARDEN HILLS, MN 55112-3933
651-266-7100

Project No. 2022-005

SHEET 1 OF 1 SHEETS