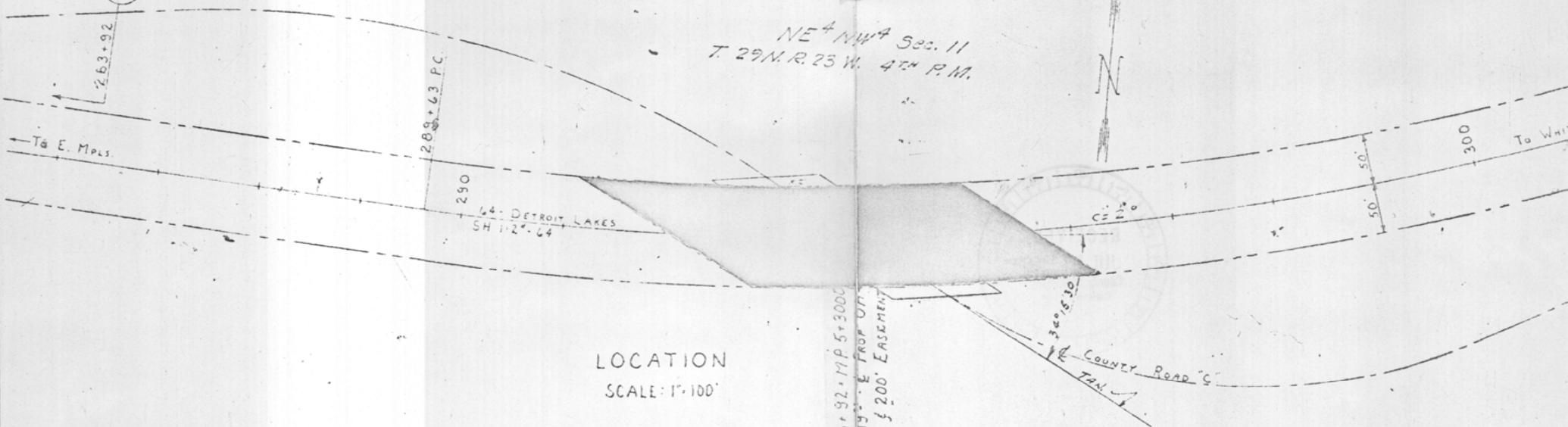
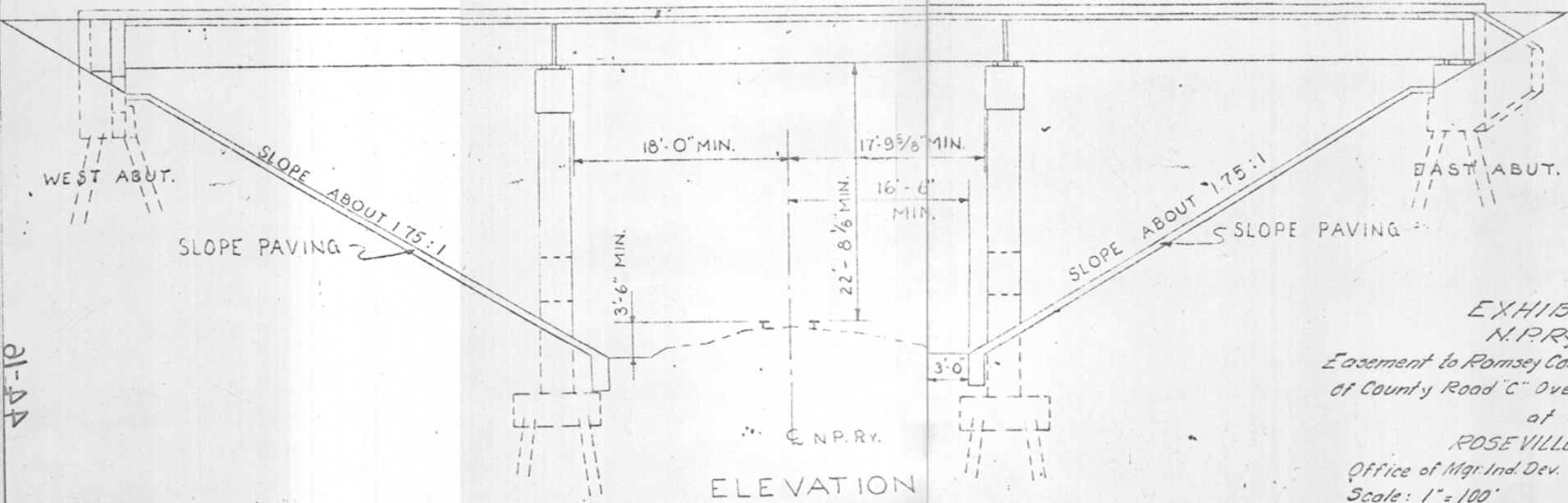


5

NE 1/4 NW 1/4 Sec. 11  
T. 29 N. R. 25 W. 4th P.M.



LOCATION  
SCALE: 1"=100'



E.N.P.R.Y.  
ELEVATION  
SCALE 1"=10'

EXHIBIT "A"  
N.P.Ry. Co.  
Easement to Ramsey County for Const.  
of County Road "C" Overhead Cross  
at  
ROSEVILLE, MINN.  
Office of Mgr. Ind. Dev. St. Paul,  
Scale: 1"=100' May 5,

21-22