

SURVEY MONUMENT STAKEDOUT POINTS ON RICE STREET AND COUNTY ROAD B

SEE SHEET 7

MON. 405

RICE STREET (C.S.A.H. NO. 49)

201
GPS-AVG-4
FOUND IN PLACE 5-30-12
VALLEY ADDITION

THORNTON'S SUB.

SOUTHWIND OF ROSEVILLE

ZEECE ADDITION

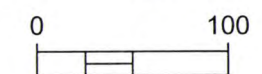
Pt No.	Northing	Easting	Elevation	Description	Replaces
201	177841.938	571703.389	918.435	GPS-AVG-4	1/2 in. IP
202	177936.882	571702.340	921.435	GPS-AVG-5	Pinch Top IP
203	178081.968	571700.807	927.432	GPS-AVG-7	3/4 in. IP
204	178157.029	571699.739	928.764	GPS-AVG-8	1/2 in. IP
205	178297.050	571698.274	932.430	GPS-AVG-9	1/2 in. IP
206	178397.221	571696.986	934.576	GPS-AVG-10	1/2 in. IP
207	178541.975	571405.016	923.937	GPS-AVG-15	RLS 9806
208	178540.349	571325.165	919.268	GPS-AVG-18	RLS 9806
209	178528.162	571200.837	914.015	GPS-AVG-19	RLS
210	178527.058	571140.777	910.766	GPS-AVG-20	RLS 10459
211	178524.810	571016.331	911.707	GPS-AVG-21	RLS 10459
212	178523.186	570939.189	913.540	GPS-AVG-22	RLS 10459

Field located with 4 or more sessions of RTK GPS on June 22-25 & July 1, 2010.

DDB - GMG

Base Station at Ramsey County Bench Mark No. 9167.

*SET 5/8 IN. REBAR WITH PLASTIC CAP



1 inch = 100 feet



RAMSEY COUNTY SURVEYOR'S OFFICE

Data files location:
X:\Survey\29\23\12\Rice ST & 36

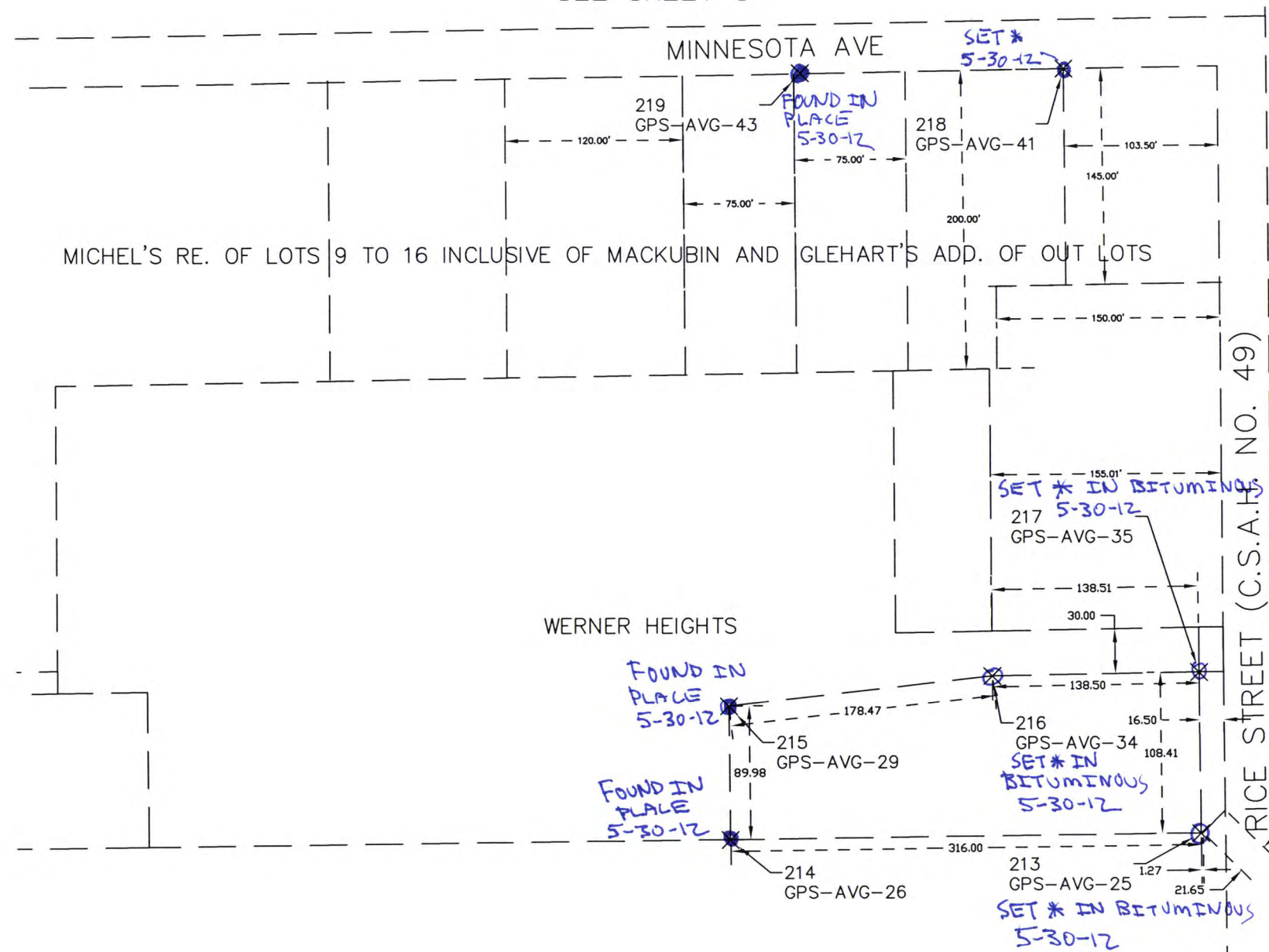
SEE SHEET 2

STATE HIGHWAY NO. 36

COUNTY ROAD B

SURVEY MONUMENT STAKEOUT POINTS ON RICE STREET AND MINNESOTA AVENUE

SEE SHEET 3



SEE SHEET 6

Pt No.	Northing	Easting	Elevation	Description	Replaces
213	179348.749	571690.699	942.710	GPS-AVG-25	RLS 9806
214	179345.161	571374.619	919.629	GPS-AVG-26	RLS 9806
215	179435.209	571374.171	935.459	GPS-AVG-29	RLS 9806
216	179454.921	571551.557	949.465	GPS-AVG-34	RLS
217	179457.211	571690.073	947.851	GPS-AVG-35	RLS
218	179861.924	571600.706	968.826	GPS-AVG-41	5/8 In. Rebar
219	179859.595	571423.626	970.894	GPS-AVG-43	1/2 In. IP

STATE HIGHWAY NO. 36

SEE SHEET 1

* SET 5/8 IN. REBAR WITH PLASTIC CAP

Data files location:
X:\Survey\29\23\12\Rice ST & 36

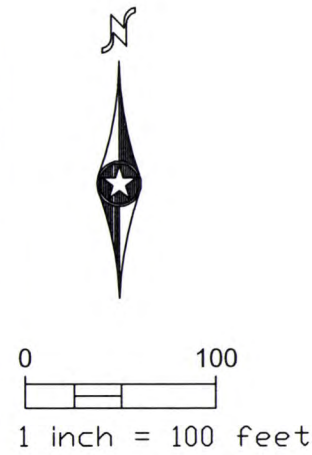
Field located with 4 or more sessions of RTK GPS on June 22-25 & July 1, 2010.

DDB - GMG

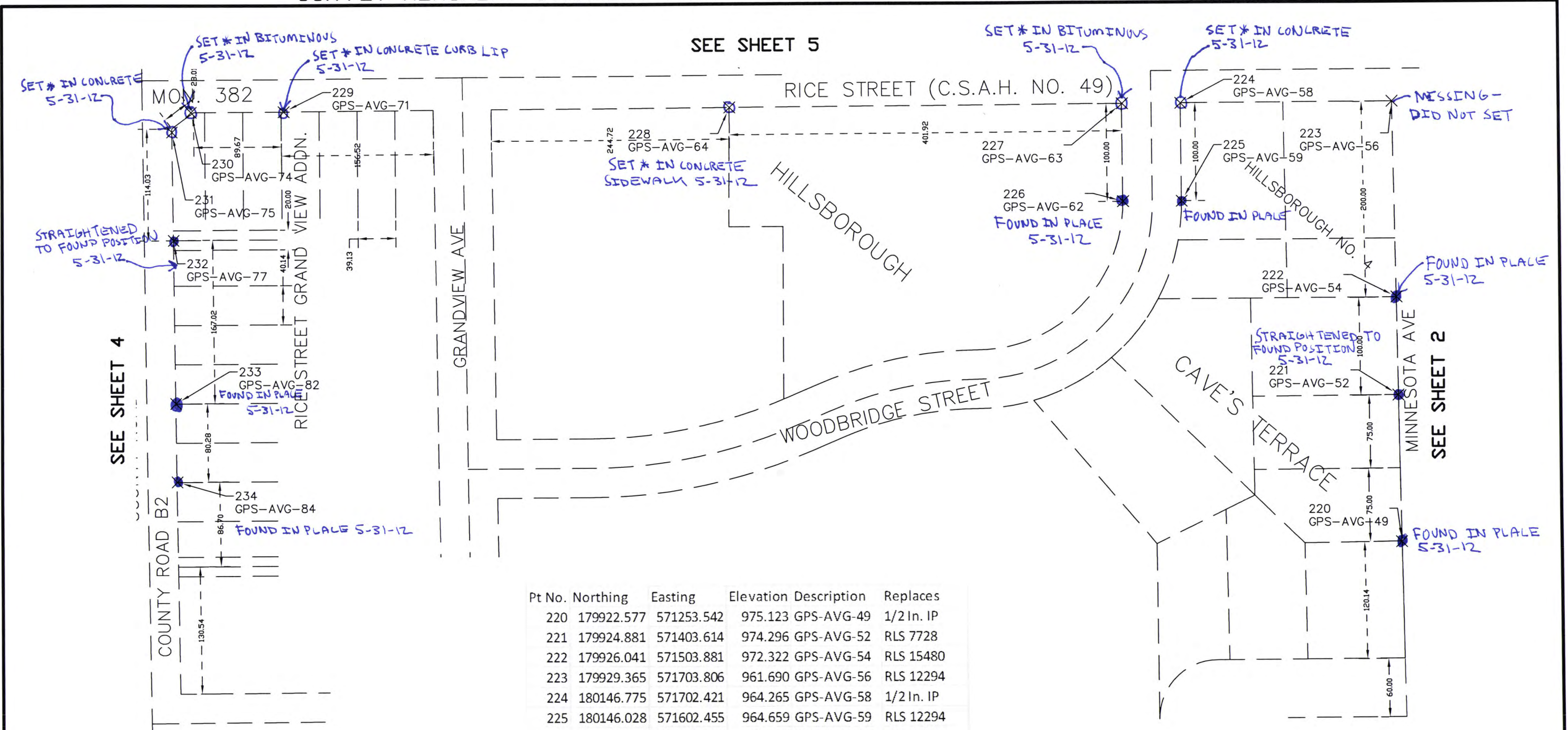
Base Station at Ramsey County
Bench Mark No. 9167.



RAMSEY COUNTY
SURVEYOR'S OFFICE



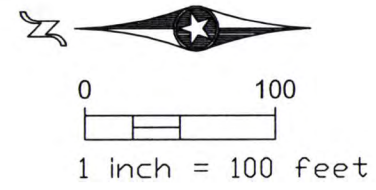
SURVEY MONUMENT STAKEOUT POINTS ON RICE STREET AND GRANDVIEW AVENUE



Pt No.	Northing	Easting	Elevation	Description	Replaces
220	179922.577	571253.542	975.123	GPS-AVG-49	1/2 In. IP
221	179924.881	571403.614	974.296	GPS-AVG-52	RLS 7728
222	179926.041	571503.881	972.322	GPS-AVG-54	RLS 15480
223	179929.365	571703.806	961.690	GPS-AVG-56	RLS 12294
224	180146.775	571702.421	964.265	GPS-AVG-58	1/2 In. IP
225	180146.028	571602.455	964.659	GPS-AVG-59	RLS 12294
226	180206.075	571602.214	964.932	GPS-AVG-62	RLS 12294
227	180206.448	571702.263	963.094	GPS-AVG-63	RLS 10947
228	180608.632	571699.918	970.677	GPS-AVG-64	RLS 10947
229	181067.467	571697.072	971.928	GPS-AVG-71	RLS
230	181162.538	571696.504	971.408	GPS-AVG-74	RLS
231	181182.215	571676.329	970.895	GPS-AVG-75	RLS 17765
232	181180.699	571565.852	969.511	GPS-AVG-77	RLS 10459
233	181178.431	571399.279	963.215	GPS-AVG-82	1 In. IP
234	181177.118	571319.045	962.590	GPS-AVG-84	RLS 9235

* SET 5/8 IN.
REBAR WITH
PLASTIC CAP

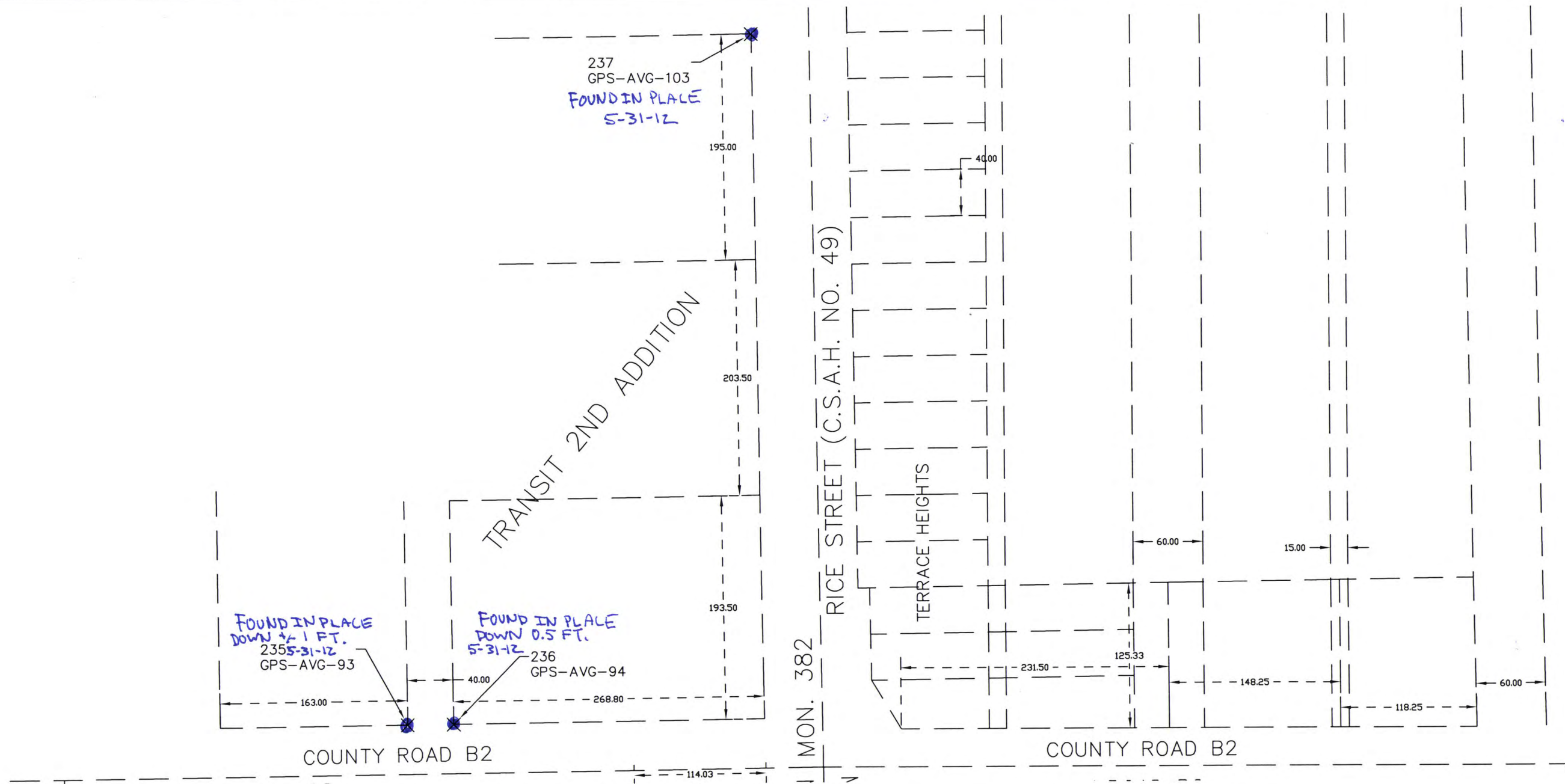
Field located with 4 or more sessions of RTK GPS on June 22-25 & July 1, 2010.
DDB - GMG
Base Station at Ramsey County Bench Mark No. 9167.



Data files location:
X:\Survey\29\23\12\Rice ST & 36



SURVEY MONUMENT STAKEOUT POINTS ON RICE STREET AND COUNTY ROAD B2



SEE SHEET 3

SEE SHEET 5



0 100
1 inch = 100 feet

Pt No.	Northing	Easting	Elevation	Description	Replaces
235	181251.117	571369.764	963.828	GPS-AVG-93	1/2 In. IP
236	181251.509	571409.849	963.062	GPS-AVG-94	1/2 In. IP
237	181846.985	571670.626	958.702	GPS-AVG-103	1/2 In. IP

964.649

Field located with 4 or more sessions of RTK GPS on June 22-25 & July 1, 2010.

DDB - GMG

Base Station at Ramsey County Bench Mark No. 9167.

Data files location:
X:\Survey\29\23\12\Rice ST & 36



SURVEY MONUMENT STAKEOUT POINTS ON RICE STREET, COUNTY ROAD B & MINNESOTA AVENUE

SEE SHEET 4

COUNTY ROAD B2

SEE SHEET 6

MON. 405

RICE STREET (C.S.A.H. NO. 49)

RLS 300

SCHROEDER'S RICE STREET 2ND ADDITION

SCHROEDER'S RICE STREET ADDITION

MINNESOTA AVE

SET * 6-1-12

SET * IN CONCRETE PED. RAMP 6-1-12

SEE SHEET 3

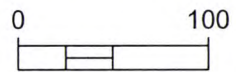
Pt No.	Northing	Easting	Elevation	Description	Replaces
238	180128.849	571802.360	963.064	GPS-AVG-140	1/2 In. IP
239	179929.866	571803.572	958.845	GPS-AVG-141	1/2 In. IP

Field located with 4 or more sessions of RTK GPS on June 22-25 & July 1, 2010.

DDB - GMG

Base Station at Ramsey County Bench Mark No. 9167.

* SET 5/8 IN. REBAR WITH PLASTIC CAP



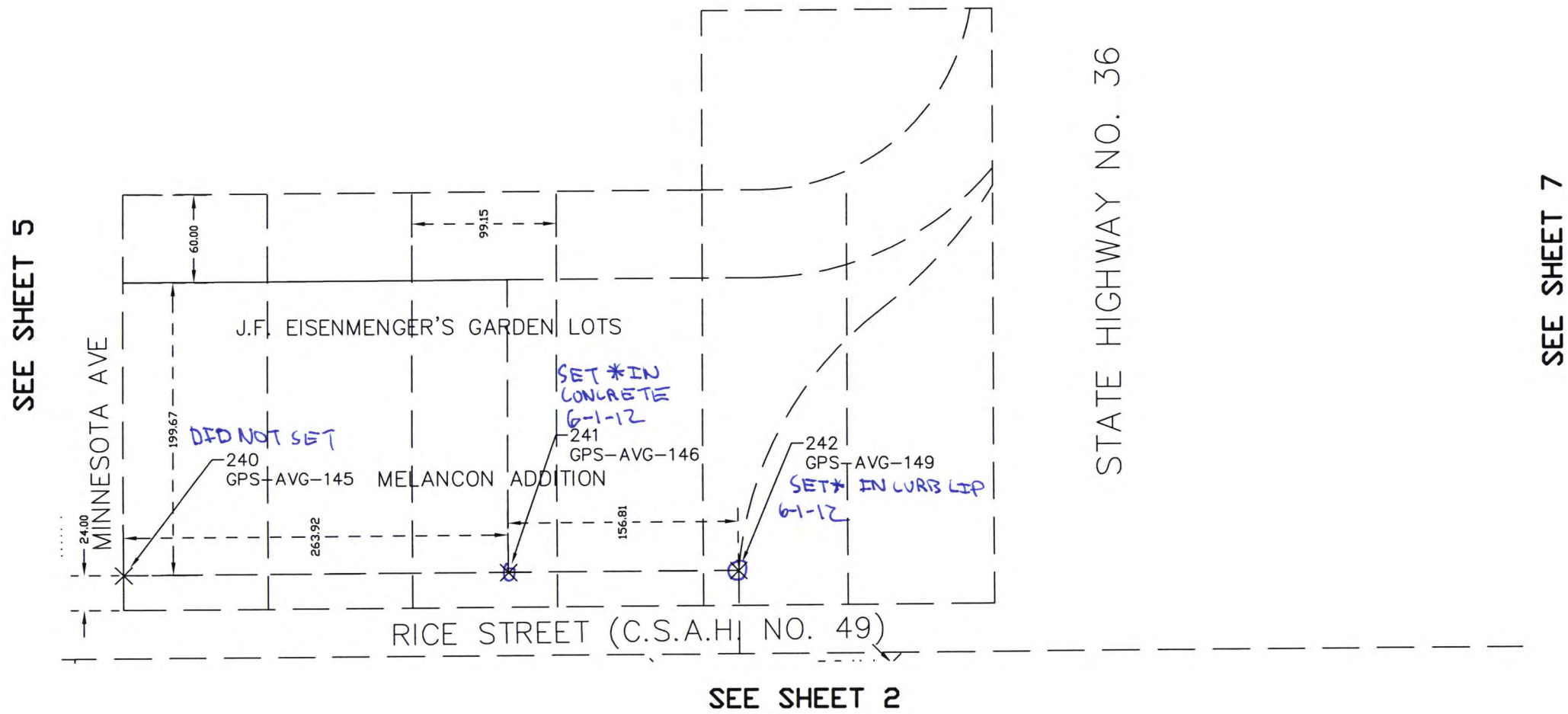
1 inch = 100 feet

Data files location:
Xi:\Survey\29\23\12\Rice ST & 36



RAMSEY COUNTY
SURVEYOR'S OFFICE

SURVEY MONUMENT STAKEDOUT POINTS ON RICE STREET AND MINNESOTA AVENUE



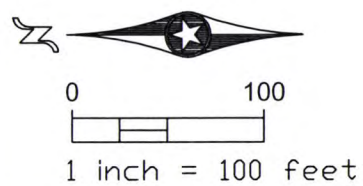
Pt No.	Northing	Easting	Elevation	Description	Replaces
240	179863.913	571794.003	958.659	GPS-AVG-145	RLS44890
241	179600.041	571795.659	953.908	GPS-AVG-146	RLS44890
242	179443.269	571796.515	947.043	GPS-AVG-149	RLS44890

Field located with 4 or more sessions of RTK GPS on June 22-25 & July 1, 2010.

DDB - GMG

Base Station at Ramsey County Bench Mark No. 9167.

* SET 5/8 IN. REBAR WITH PLASTIC CAP



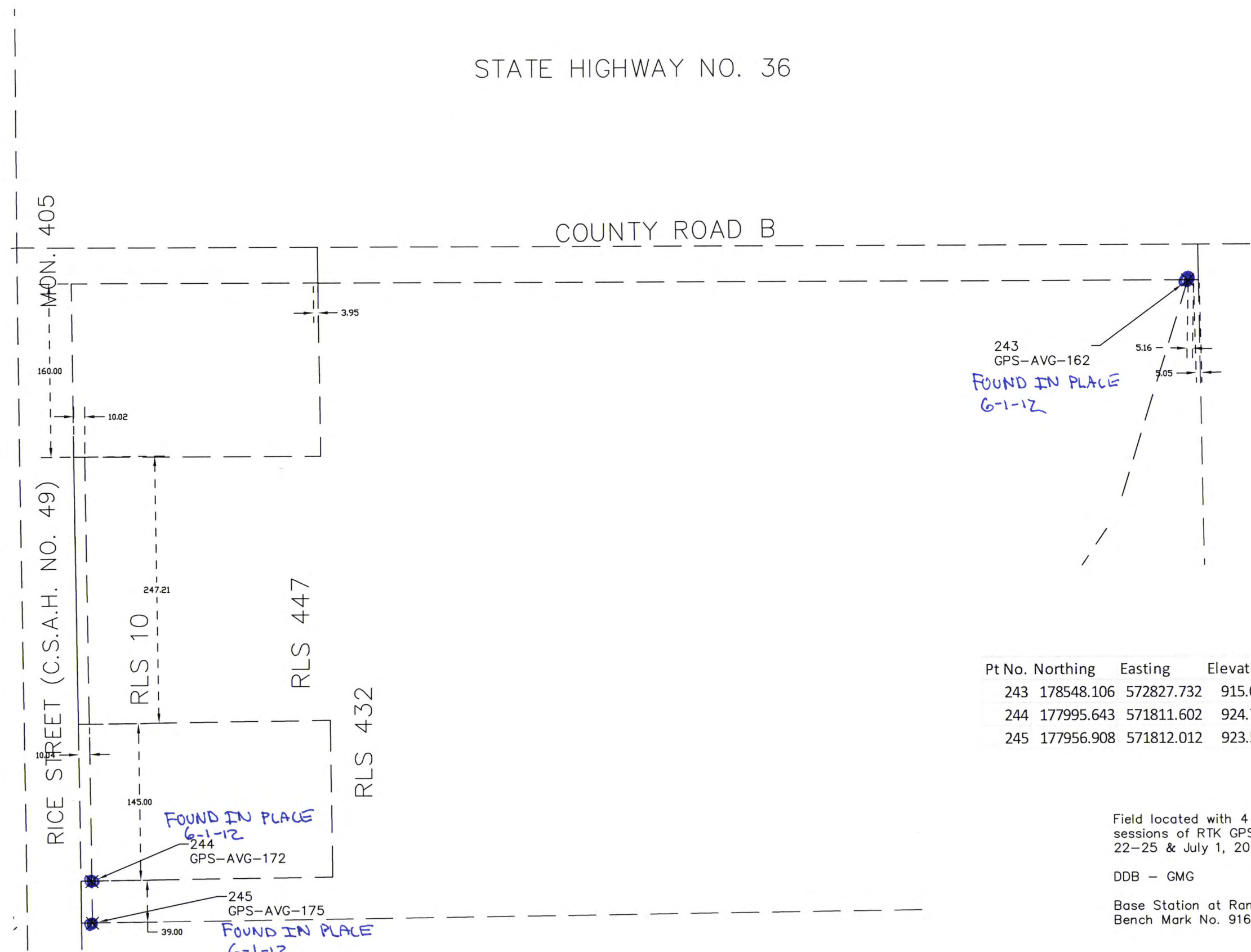
Data files location:
X:\Survey\29\23\12\Rice ST & 36



SURVEY MONUMENT STAKEOUT ON RICE STREET AND COUNTY ROAD B

SEE SHEET 6

STATE HIGHWAY NO. 36



243
GPS-AVG-162
FOUND IN PLACE
6-1-12

FOUND IN PLACE
6-1-12
244
GPS-AVG-172
FOUND IN PLACE
6-1-12
245
GPS-AVG-175

Pt No.	Northing	Easting	Elevation	Description	Replaces
243	178548.106	572827.732	915.066	GPS-AVG-162	1/2 In. IP
244	177995.643	571811.602	924.761	GPS-AVG-172	1/2 In. IP
245	177956.908	571812.012	923.511	GPS-AVG-175	RLS

Field located with 4 or more sessions of RTK GPS on June 22-25 & July 1, 2010.

DDB - GMG

Base Station at Ramsey County Bench Mark No. 9167.

Data files location:
X:\Survey\29\23\12\Rice ST & 36

