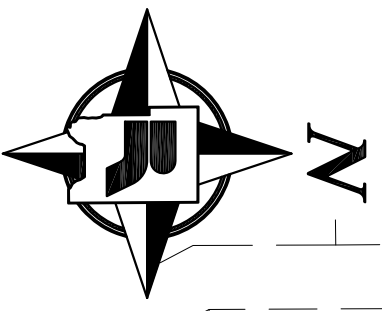
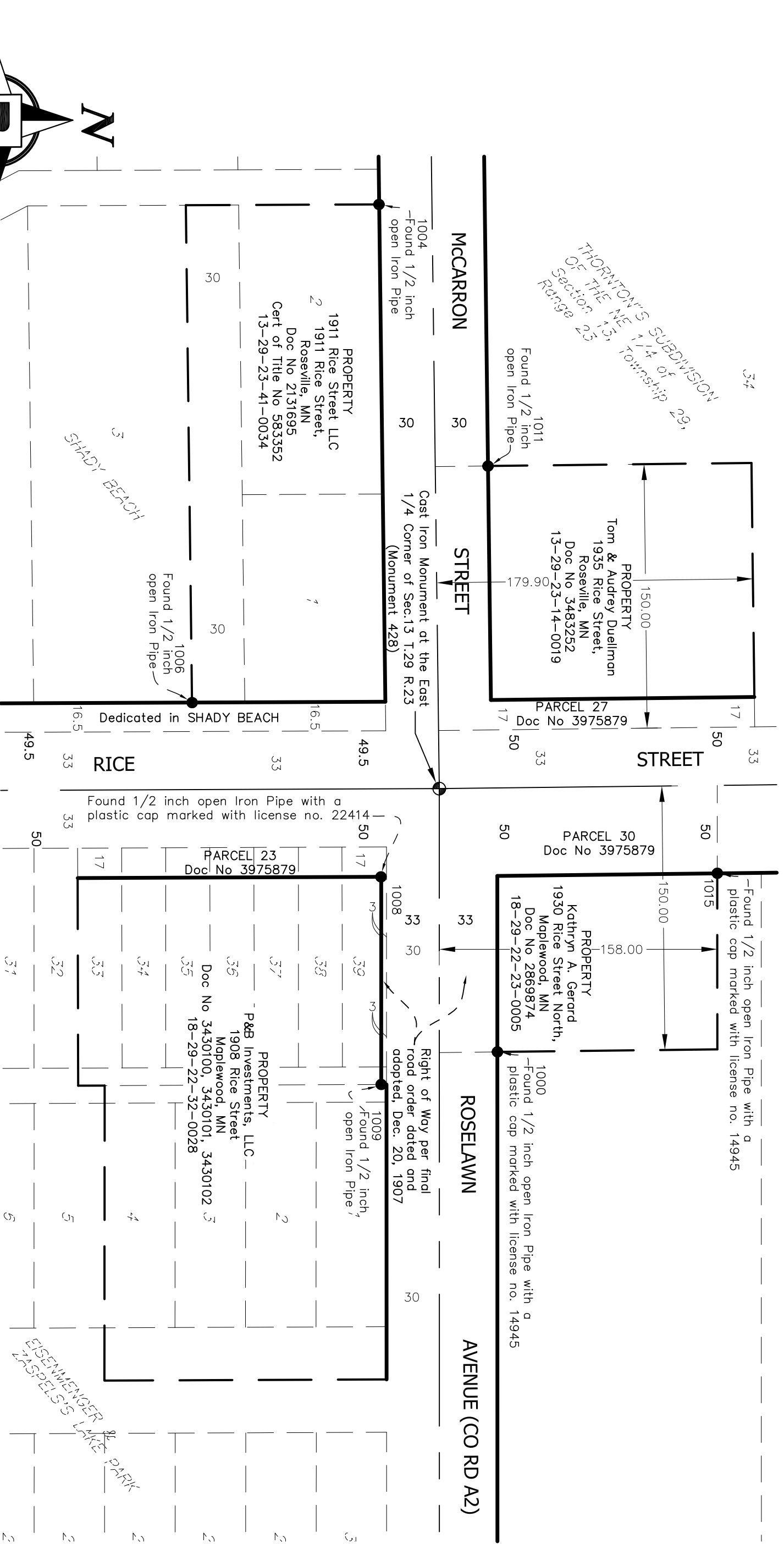


RICE & ROSELAWN INTERSECTION RIGHT OF WAY MAP



LEGEND

- Denotes found monument (size, type and Land Surveyor identification described on graphics).
- ⊕ Denotes Ramsey County cast iron monument.

Found Monuments

(Located May 23, 2013)
 Mon. 428,175953,604,571775,401
 1000,175986,655,571925,005
 1004,175919,346,571443,425
 1006,175813,144,571726,527
 1008,175920,478,571825,539
 1009,175920,608,571943,515
 1011,175981,300,571592,125
 1013,176111,660,571823,510

RAMSEY COUNTY PUBLIC WORKS
LAND SURVEY/GIS DIVISION
 1425 PAUL KIRKWOOD DRIVE
 ARDEN HILLS, MN 55112-3933
 651-266-7100

