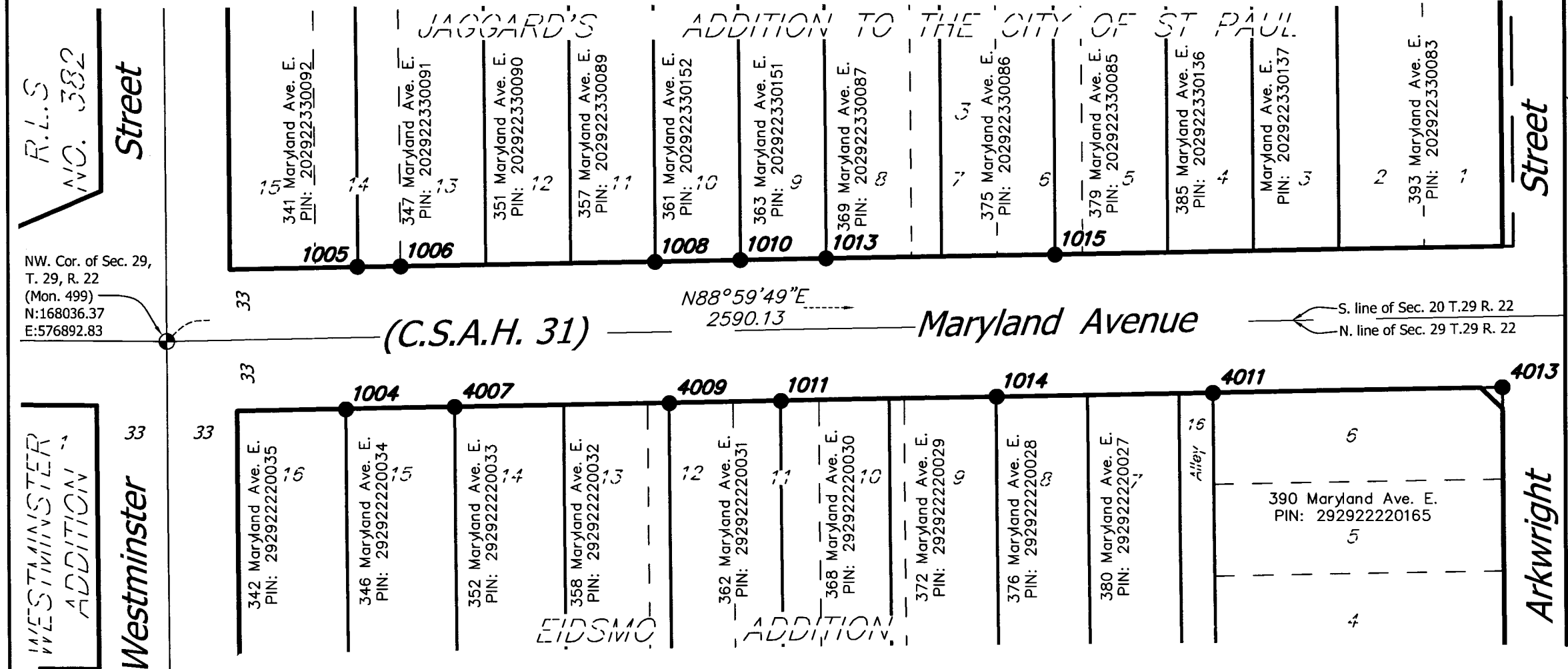


SURVEY MONUMENT REPLACEMENT EXHIBIT- MARYLAND AVENUE AT ARKWRIGHT STREET



MATCH LINE
SEE SHEET 2 OF 2 SHEETS

NOTES

This exhibit shows the monumentation found at or near the existing right of way prior to the reconstruction of Maryland Avenue. This exhibit shows the results of a detailed monument search performed by the Ramsey County Surveyor's Office.

The coordinate bearing basis for all the information shown hereon is based on the Ramsey County Coordinate System, NAD83 (1986 adj.)

Monuments were located using VRS GPS with a Trimble R8 GNSS antenna. The project was site calibrated on 5-15-12. It is calibrated to Ramsey County Monument Nos. 476, 477, 522 and 523 (See page 2 of 2). The location of each monument was observed 4 times during two separate sessions. The average of the observations is shown in the chart contained hereon.

LEGEND

- Denotes approximate existing right of way.
- Denotes approximate existing parcel line.
- Denotes found monument (size, type or Land Surveyor identification described in chart).
- Denotes Ramsey County cast iron monument.

| Point No. | Pre-reconstruction | | | Post-reconstruction | |
|-----------|--------------------|-----------|--|---------------------|---|
| | Northing | Easting | Description of Monument Found | Date Found | Found in Place/Reset* Date Found/Reset |
| 1004 | 168004.47 | 576976.98 | Found pinch top iron pipe | 5/15/2012 | Not Reset - under wall 7-17-14 |
| 1005 | 168071.07 | 576982.56 | Found 1/2 inch iron pipe with Lic. No. 10455 | 5/15/2012 | Reset * 7-17-14 |
| 1006 | 168071.23 | 577002.68 | Found pinch top iron pipe | 5/15/2012 | Reset * 7-17-14 |
| 1008 | 168073.26 | 577122.45 | Found 1/2 inch iron pipe with Lic. No. 9235 | 5/15/2012 | Reset * 7-16-14 |
| 1010 | 168074.02 | 577162.41 | Found rebar with illegible cap | 5/15/2012 | Reset * 7-16-14 |
| 1011 | 168008.14 | 577181.03 | Found 1/2 inch iron pipe with Lic. No. 19478 | 5/15/2012 | Reset * 7-15-14 |
| 1013 | 168074.71 | 577202.41 | Found pinch top iron pipe | 5/15/2012 | Reset * 7-16-14 |
| 1014 | 168010.09 | 577281.99 | Found 1/2 inch open iron pipe | 5/15/2012 | Reset * 7-11-14 |
| 1015 | 168076.48 | 577309.29 | Found pinch top iron pipe | 5/15/2012 | Reset * 7-16-14 |
| 4007 | 168005.54 | 577027.95 | Found pinch top iron pipe | 5/15/2012 | Reset * 7-15-14 |
| 4009 | 168007.21 | 577129.01 | Found 1/2 inch open iron pipe | 5/15/2012 | Reset * 7-15-14 |
| 4011 | 168011.76 | 577383.37 | Found 1/2 inch iron pipe with Lic. No. 15480 | 5/15/2012 | Reset * 7-15-14 |
| 4013 | 168014.25 | 577518.32 | Found 1/2 inch iron pipe with Lic. No. 16456 | 5/15/2012 | Reset * 7-15-14 |

*Set a 5/8 in. by 14 in. rebar with a plastic cap embossed "Ramsey County 45816"

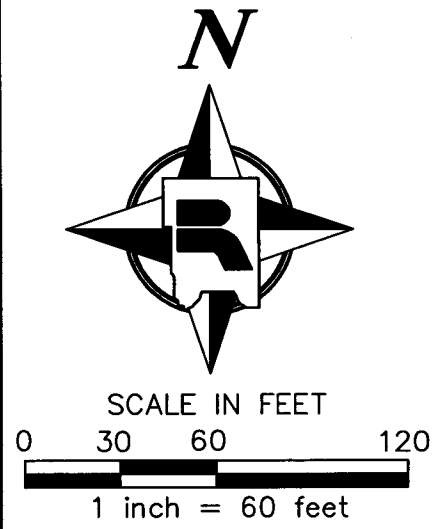
I hereby certify that this document was prepared by me or under my direct supervision and that I am a duly Licensed Land Surveyor under the laws of the State of Minnesota.

Daniel D. Baar 4-3-13

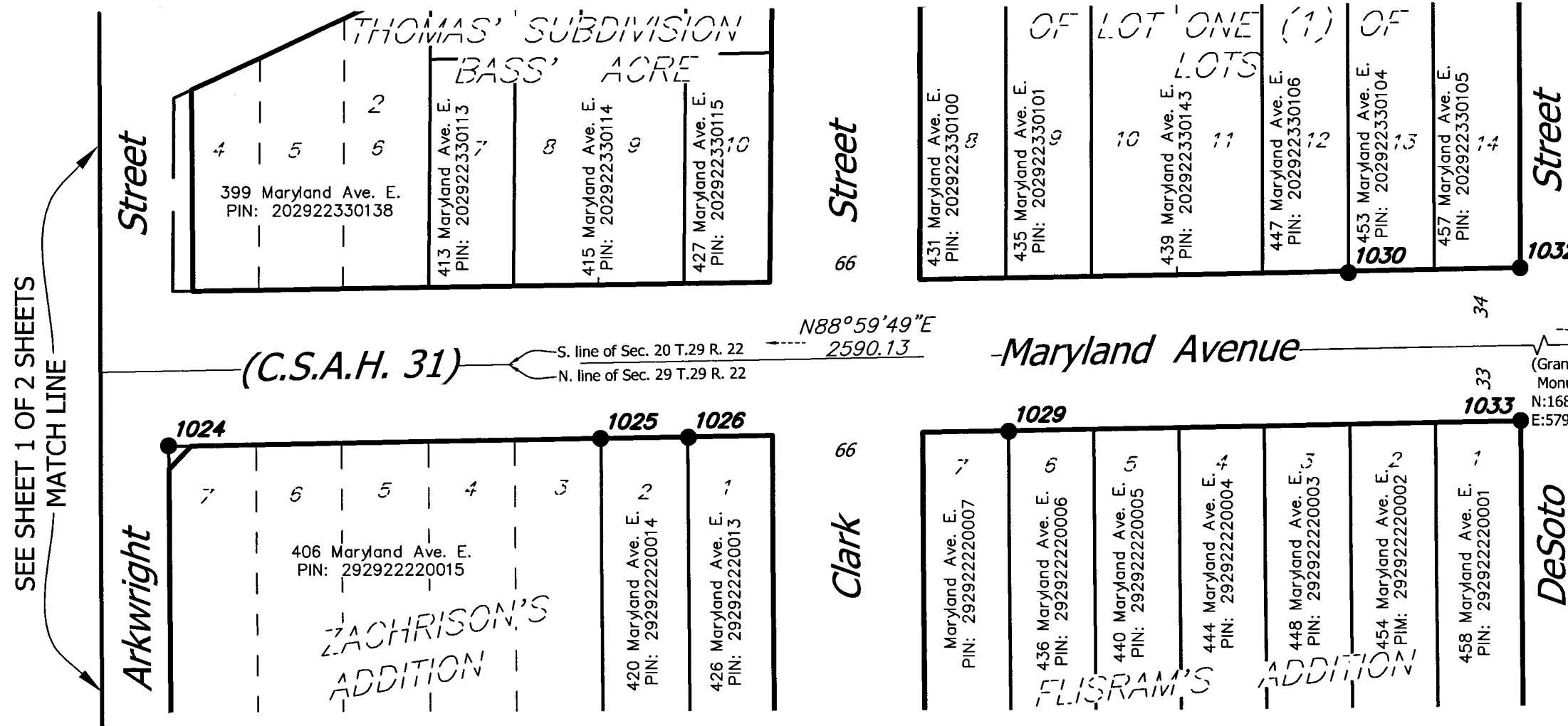
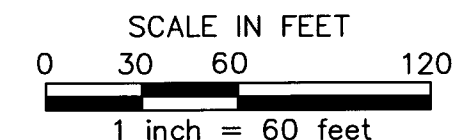
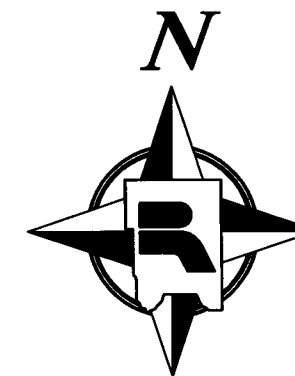
Daniel D. Baar, L.S.
Deputy County Surveyor
Minnesota License No. 45816

Date
Rev. 10-2-14
Added post construction notes

RAMSEY COUNTY PUBLIC WORKS
LAND SURVEY/GIS DIVISION
1425 PAUL KIRKWOLD DRIVE
ARDEN HILLS, MN 55112-3933
651-266-7100
<http://www.co.ramsey.mn.us/cs/index.htm>



SURVEY MONUMENT REPLACEMENT EXHIBIT- MARYLAND AVENUE AT ARKWRIGHT STREET



LEGEND

- Denotes approximate existing right of way.
- Denotes approximate existing parcel line.
- Denotes found monument (size, type or Land Surveyor identification described in chart).
- Denotes Ramsey County cast iron monument.
- Denotes granite monument.

| Point No. | Pre-reconstruction | | | | Post-reconstruction | |
|-----------|--------------------|-----------|---------------------------------|------------|-----------------------|------------------|
| | Northing | Easting | Description of Monument Found | Date Found | Found in Place/Reset* | Date Found/Reset |
| 1024 | 168015.58 | 577578.57 | Found 1/2 inch open iron pipe | 5/15/2012 | Reset * | 7-16-14 |
| 1025 | 168018.67 | 577768.52 | Found 1/2 inch open iron pipe | 5/15/2012 | Reset * | 7-15-14 |
| 1026 | 168019.18 | 577806.93 | Found 1/2 inch open iron pipe | 5/15/2012 | Reset * | 7-11-14 |
| 1029 | 168021.58 | 577947.13 | Found 1/2 inch open iron pipe | 5/15/2012 | Found in place | 7-15-14 |
| 1030 | 168090.73 | 578096.18 | Found 3/8 inch solid iron pipe | 5/15/2012 | Found in place | 7-15-14 |
| 1032 | 168092.76 | 578171.18 | Found stone monument | 5/15/2012 | Found in place | 7-15-14 |
| 1033 | 168025.93 | 578171.24 | Found square bar under sidewalk | 5/15/2012 | Found in place | 7-15-14 |

*Set a 5/8 in. by 14 in. rebar with a plastic cap embossed "Ramsey County 45816"

| Project Calibration Points | | | |
|----------------------------|-----------|-----------|---------------------------------------|
| Mon. No. | Northing | Easting | Description of Monument |
| 476 | 170671.52 | 576877.02 | West 1/4 Corner of Sec.20, T.29, R.22 |
| 477 | 170715.79 | 579489.60 | Center of Sec.20, T.29, R.22 |
| 522 | 165402.71 | 576905.29 | West 1/4 Corner of Sec.29, T.29, R.22 |
| 523 | 165446.39 | 579525.17 | Center of Sec.29, T.29, R.22 |

RAMSEY COUNTY PUBLIC WORKS
LAND SURVEY/GIS DIVISION
 1425 PAUL KIRKWOLD DRIVE
 ARDEN HILLS, MN 55112-3933
 651-266-7100
<http://www.co.ramsey.mn.us/cs/index.htm>

