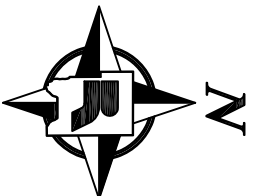
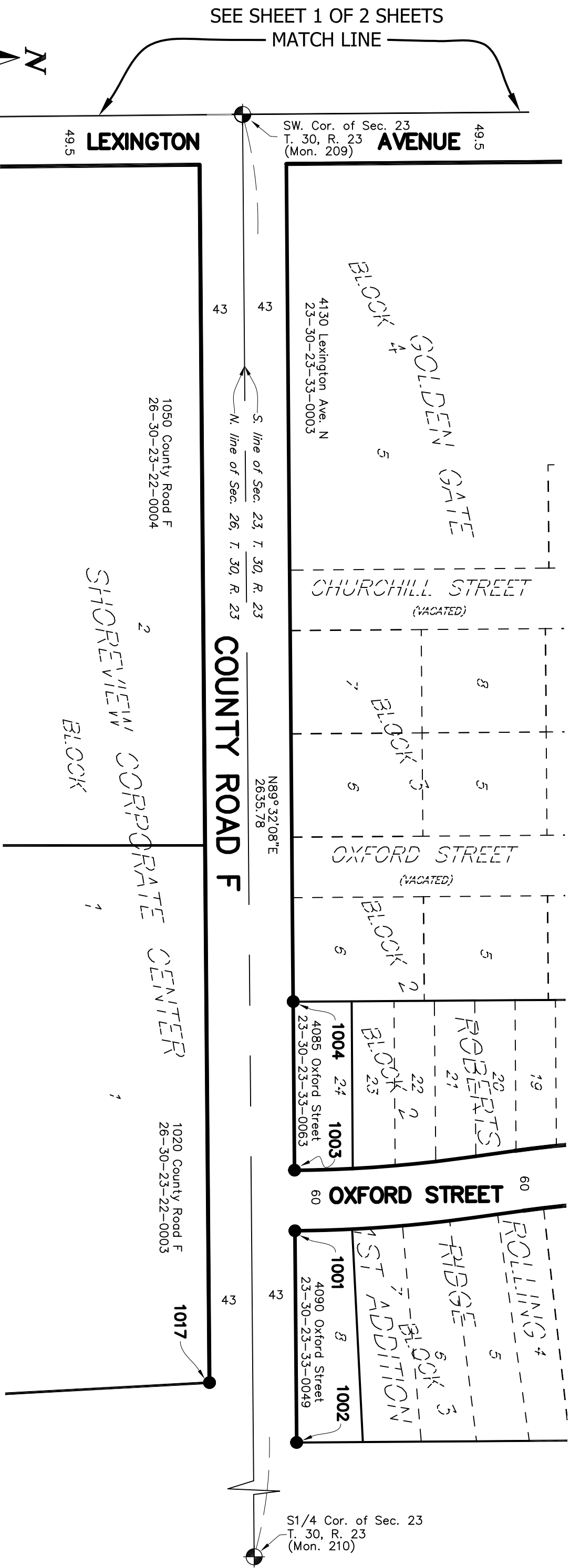


SURVEY MONUMENT REPLACEMENT EXHIBIT - COUNTY ROAD F



SEE NOTES ON SHEET 1 OF 2



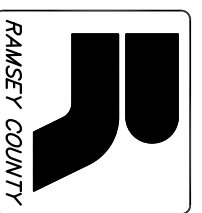
Point No.	Northing	Easting	Description of Monument Found	Date Found	Found in Place/Reset*	Date Found/Reset
1001	199897.17	562119.70	Ramsey County Capped Rebar	9/20/2012		
1002	199898.85	562329.73	Ramsey County Capped Rebar	9/20/2012		
1003	199896.81	562059.57	1/2 inch iron pipe with cap inscribed 41578	9/20/2012		
1004	199895.50	561892.29	1/2 inch iron pipe with cap inscribed 41578	9/20/2012		
1017	199812.50	562270.34	Ramsey County Capped Rebar	10/11/2012		

*Set a 5/8 inch by 14 inch rebar with a plastic cap embossed "Ramsey County 45816"

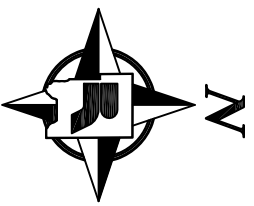
LEGEND

- Denotes approximate existing Parcel Line.
- Denotes approximate pre-construction public right of way line.
- Denotes found monument (size, type, and Land Surveyor License Number described in chart).
- Denotes Ramsey County cast iron monument.

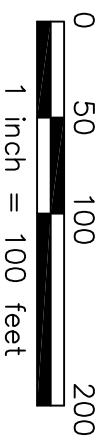
RAMSEY COUNTY PUBLIC WORKS
LAND SURVEY / GIS DIVISION
 1425 PAUL KIRKWOOD DRIVE
 ARDEN HILLS, MN 55112-3933
 651-266-7100



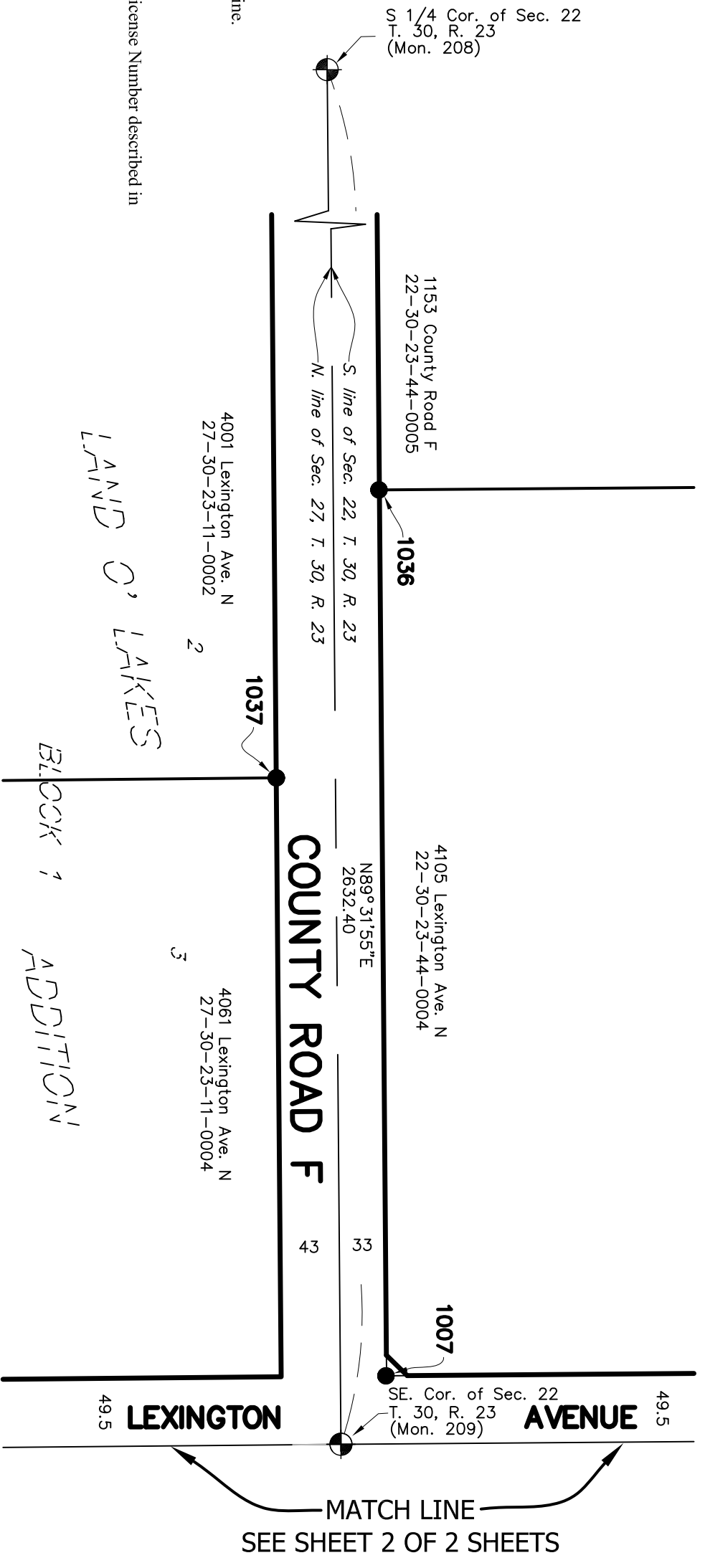
SURVEY MONUMENT REPLACEMENT EXHIBIT - COUNTY ROAD F



SCALE IN FEET



S 1/4 Cor. of Sec. 22
T. 30, R. 23
(Mon. 208)



LEGEND

- Denotes approximate pre-construction public right of way line.
- Denotes approximate existing Parcel Line.
- Denotes found monument (size, type, and Land Surveyor License Number described in chart).
- Denotes Ramsey County cast iron monument.

NOTES

This exhibit shows the monumentation found at or near the existing right of way lines prior to the 2013 reconstruction of Lexington Avenue and County Road F along with the intersections contained within. This exhibit shows the results of a detailed monument search performed by the Ramsey County Surveyor's Office.

The coordinate and bearing basis for all the information shown hereon is based on the Ramsey County Coordinate System, NAD83 (1986 adj.).

The S1/4 Corner of Sec. 22, T. 30, R. 23 (Mon. 208) The SE Corner of Sec. 22, T. 30, R. 23 (Mon. 209)
 N: 199823.737 N: 199845.246
 E: 558379.827 E: 561012.137

Monuments were located using VRS GPS with a Trimble R8 GNSS antenna. The project was site calibrated on 9-20-12. It was calibrated horizontally to Ramsey County Monument No. 209 and verified on Ramsey County Monument No. 185. The location of each monument was observed multiple times during two separate RTK sessions. The results of the observed coordinates are shown in the chart contained hereon.

Point No.	Pre-Reconstruction			Post-Reconstruction	
	Northing	Easting	Description of Monument Found	Found in Place/Reset*	Date Found/Reset
1007	199877.93	560962.40	1/2 inch iron pipe with cap inscribed 10832		9/20/2012
1036	199872.86	560318.85	1/2 inch iron pipe with cap inscribed 10832		10/16/2012
1037	199798.33	560528.04	1/2 inch iron pipe with cap inscribed 23021		10/16/2012

*Set a 5/8 inch by 14 inch rebar with a plastic cap embossed "Ramsey County 45816"

I hereby certify that this document was prepared by me or under my direct supervision and that I am a duly Licensed Land Surveyor under the laws of the State of Minnesota.

Daniel D. Baar, L.S. Date
 Deputy County Surveyor

(T:)Design/PROJECTS/P-3305 Lexington and County Road F/County Surveyor/Drawings/CFEExhibit.dwg

RAMSEY COUNTY PUBLIC WORKS
LAND SURVEY / GIS DIVISION
 1425 PAUL KIRKWOOD DRIVE
 ARDEN HILLS, MN 55112-3933
 651-266-7100

