





SURVEY MONUMENT REPLACEMENT EXHIBIT

LEXINGTON AVENUE

LEGEND

-  Denotes approximate pre-construction public right of way line.
-  Denotes approximate existing Parcel Line.
-  Denotes found monument (size, type, and Land Surveyor License Number described in chart).
-  Denotes Ramsey County cast iron monument.

NOTES

This exhibit shows the monumentation found at or near the existing right of way lines prior to the 2013 reconstruction of Lexington Avenue and County Road F along with the intersections contained within. This exhibit shows the results of a detailed monument search performed by the Ramsey County Surveyor's Office.

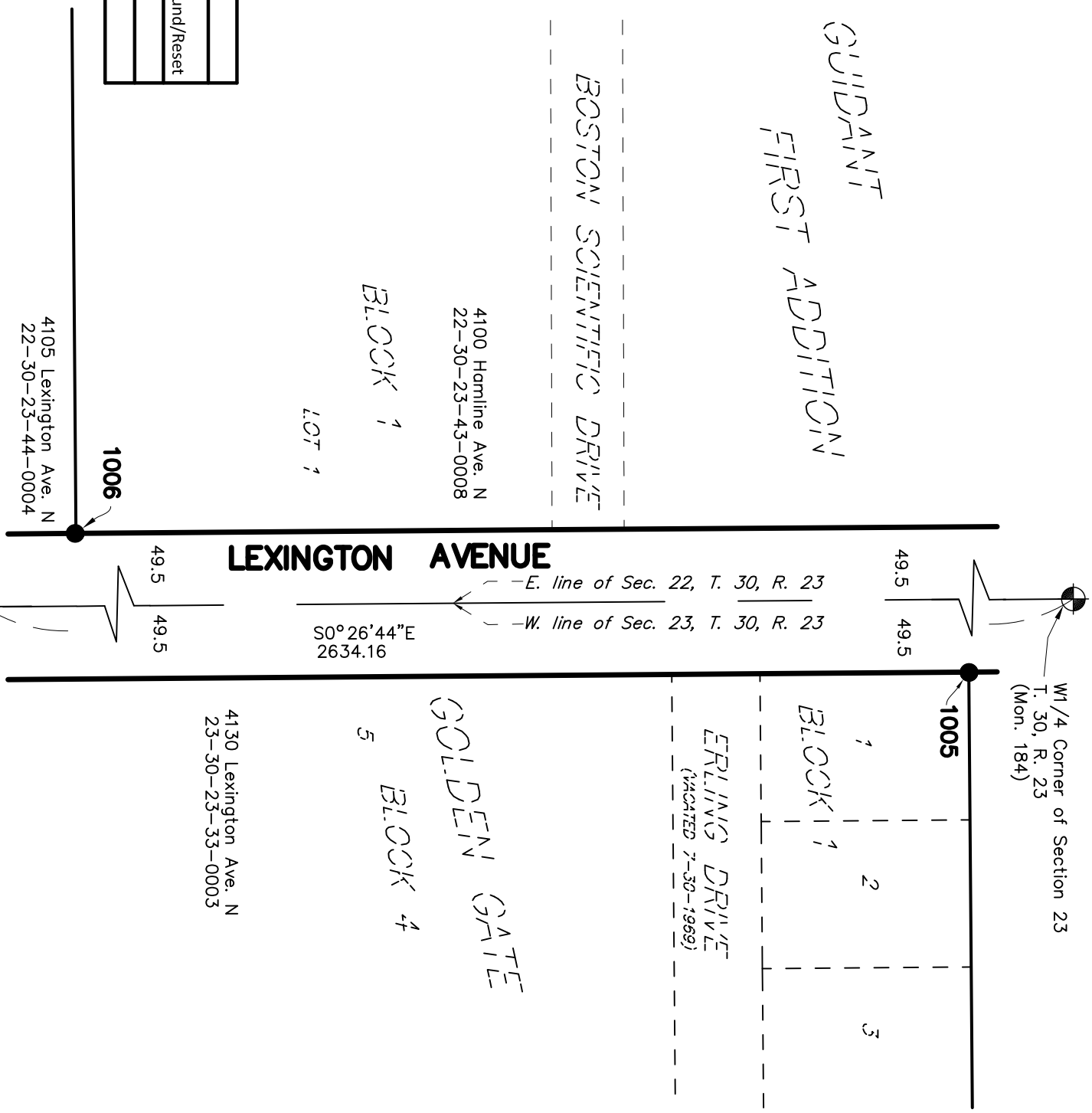
The coordinate and bearing basis for all the information shown hereon is based on the Ramsey County Coordinate System, NAD83 (1986 adj.).

The E1/4 Corner of Sec. 27, T. 30, R. 23 (Mon. 234) The NE Corner of Sec. 27, T. 30, R. 23 (Mon. 209)
 N: 197204.816 N: 199845.246
 E: 561036.909 E: 561012.137

Monuments were located using VRS GPS with a Trimble R8 GNSS antenna. The project was site calibrated on 9-20-12. It was calibrated horizontally to Ramsey County Monument No. 209 and verified on Ramsey County Monument No. 185. The location of each monument was observed multiple times during two separate RTK sessions. The results of the observations are shown in the chart contained hereon.

Pre-Reconstruction				Post-Reconstruction	
Point No.	Northing	Easting	Description of Monument Found	Found in Place/Reset*	Date Found/Reset
1005	200835.76	561054.18	1/2 inch iron pipe with cap inscribed 21729 Leaning NE'ly		9/20/2012
1006	200227.88	560959.66	1/2 inch iron pipe with cap inscribed 13295		9/20/2012

*Set a 5/8 inch by 14 inch rebar with a plastic cap embossed "Ramsey County 45816"



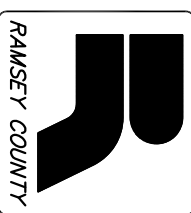
I hereby certify that this document was prepared by me or under my direct supervision and that I am a duly Licensed Land Surveyor under the laws of the State of Minnesota.

Daniel D. Baar, L.S.
 Deputy County Surveyor
 Minnesota License No. 45816

Date _____

SEE SHEET 2 OF 3 SHEETS





RAMSEY COUNTY PUBLIC WORKS
 LAND SURVEY / GIS DIVISION
 1425 PAUL KIRKWOOD DRIVE
 ARDEN HILLS, MN 55112-3933
 651-266-7100



SURVEY MONUMENT REPLACEMENT EXHIBIT

LEXINGTON AVENUE

LEGEND

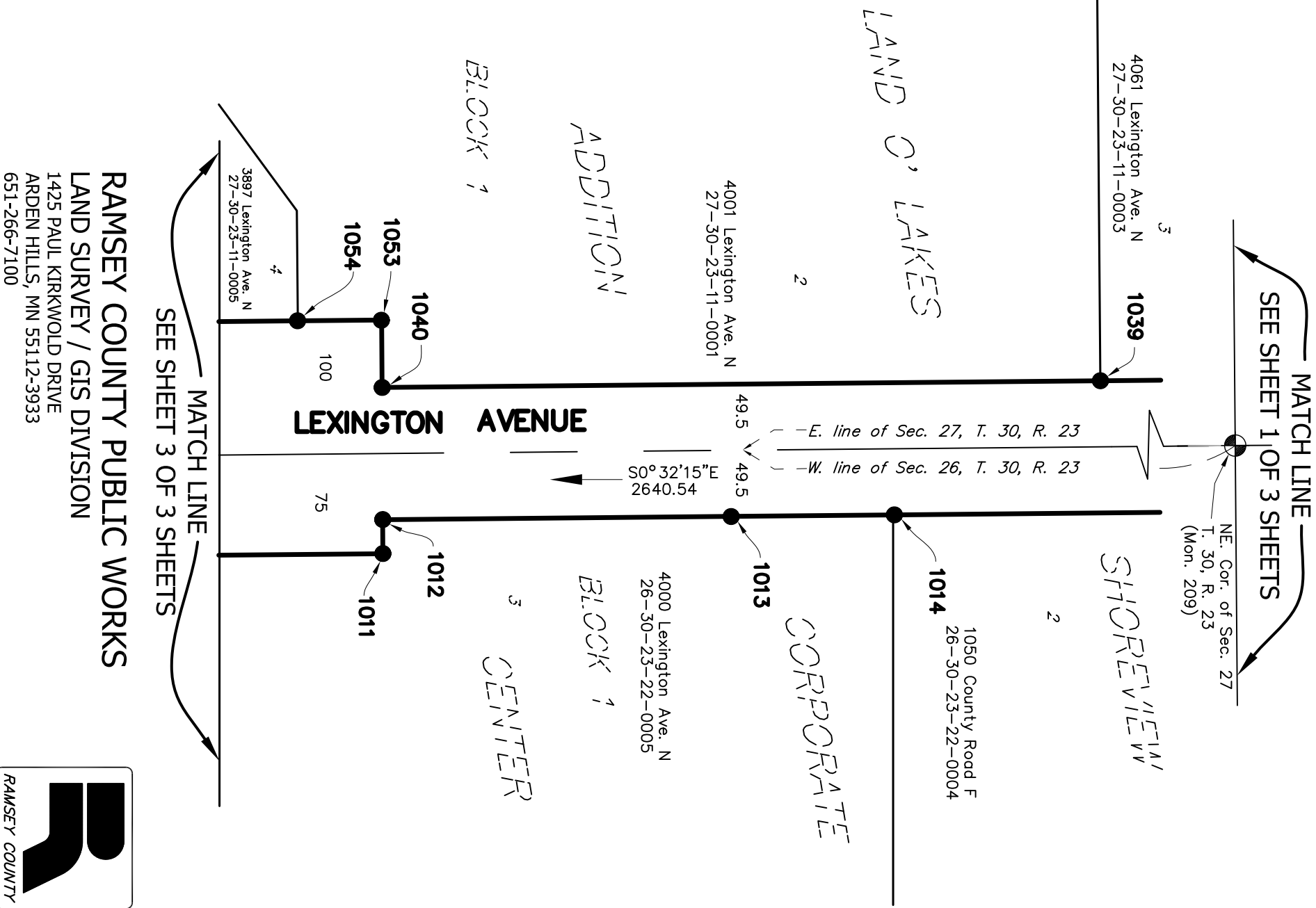
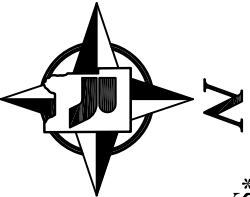
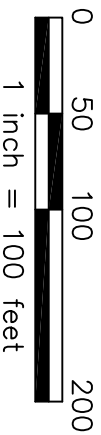
-  Denotes approximate pre-construction public right of way line.
-  Denotes approximate existing Parcel Line.
-  Denotes found monument (size, type, and Land Surveyor License Number described in chart).
-  Denotes Ramsey County cast iron monument.

SEE NOTES ON SHEET 1 OF 3

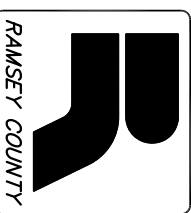
Point No.	Northing	Easting	Description of Monument Found	Pre-Reconstruction		Post-Reconstruction	
				Date Found	Found in Place/Reset*	Date Found/Reset	
1011	198764.66	561097.16	1/2 inch iron pipe with cap inscribed 8612	10/11/2012			
1012	198764.56	561071.71	1/2 inch iron pipe with cap inscribed 8612	10/11/2012			
1013	199025.41	561069.44	1/2 inch iron pipe with cap inscribed 8612	10/11/2012			
1014	199147.62	561068.19	1/2 inch iron pipe with cap inscribed 15480	10/11/2012			
1039	199301.90	560967.72	1/4 inch Rebar with cap inscribed 23002	10/16/2012			
1040	198764.13	560972.76	1/2 inch iron pipe with cap inscribed 15480	10/16/2012			
1053	198763.51	560922.40	1/2 inch open iron pipe	10/16/2012			
1054	198700.77	560922.81	1/2 inch iron pipe with broken and unreadable cap	10/16/2012			

*Set a 5/8 inch by 14 inch rebar with a plastic cap embossed "Ramsey County 45816"

SCALE IN FEET



RAMSEY COUNTY PUBLIC WORKS
 LAND SURVEY / GIS DIVISION
 1425 PAUL KIRKWOOD DRIVE
 ARDEN HILLS, MN 55112-3933
 651-266-7100







SURVEY MONUMENT REPLACEMENT EXHIBIT

LEXINGTON AVENUE

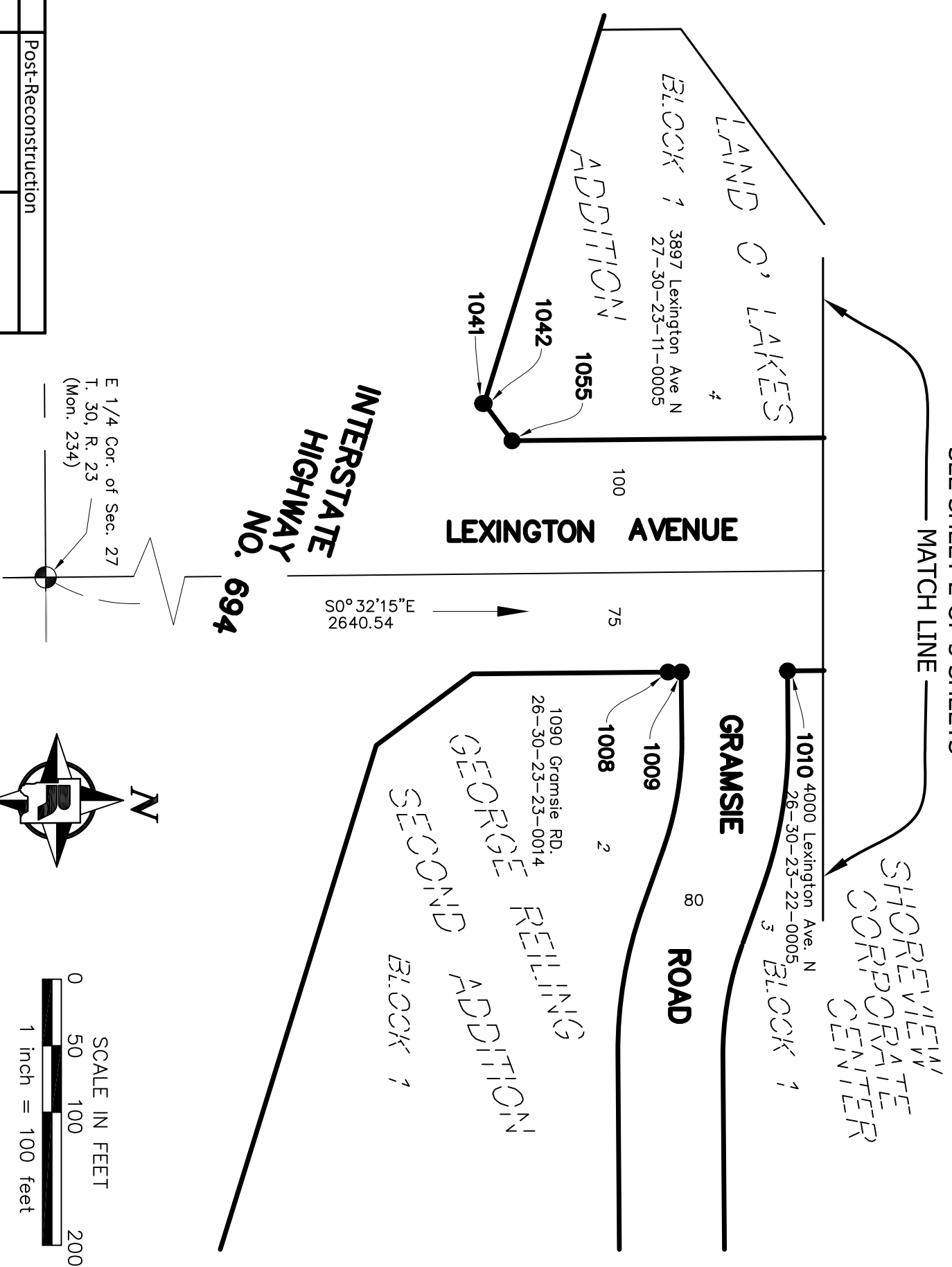
SEE SHEET 2 OF 3 SHEETS

MATCH LINE

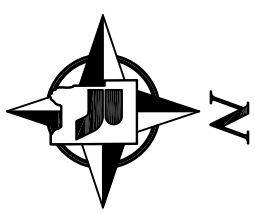
- LEGEND**
-  Denotes approximate pre-construction public right of way line.
 -  Denotes approximate existing Parcel Line.
 -  Denotes found monument (size, type, and Land Surveyor License Number described in chart).
 -  Denotes Ramsey County cast iron monument.

Point No.	Northing	Easting	Pre-Reconstruction		Post-Reconstruction	
			Description of Monument Found	Date Found	Found in Place/Reset*	Date found/Reset
1008	198525.82	561099.52	Found 1/2 inch iron pipe with cap inscribed 9018	10/11/2012		
1009	198535.74	561099.47	Found 1/2 inch iron pipe with broken and unreadable cap	10/11/2012		
1010	198615.67	561098.67	Found 1/2 inch iron pipe with cap inscribed 16321	10/11/2012		
1041	198386.54	560897.62	Found 1/2 inch open iron pipe	10/16/2012		
1042	198387.53	560897.62	Found 1/2 inch iron pipe with cap inscribed 8612	10/16/2012		
1055	198408.54	560925.67	Found 1/2 inch iron pipe with cap inscribed 15480	10/16/2012		

*Set a 5/8 inch by 14 inch rebar with a plastic cap embossed "Ramsey County 45816"



E 1/4 Cor. of Sec. 27
T. 30, R. 23
(Mon. 234)



SCALE IN FEET
0 50 100 200
1 inch = 100 feet

RAMSEY COUNTY PUBLIC WORKS
LAND SURVEY / GIS DIVISION
1425 PAUL KIRKWOOD DRIVE
ARDEN HILLS, MN 55112-3933
651-266-7100

