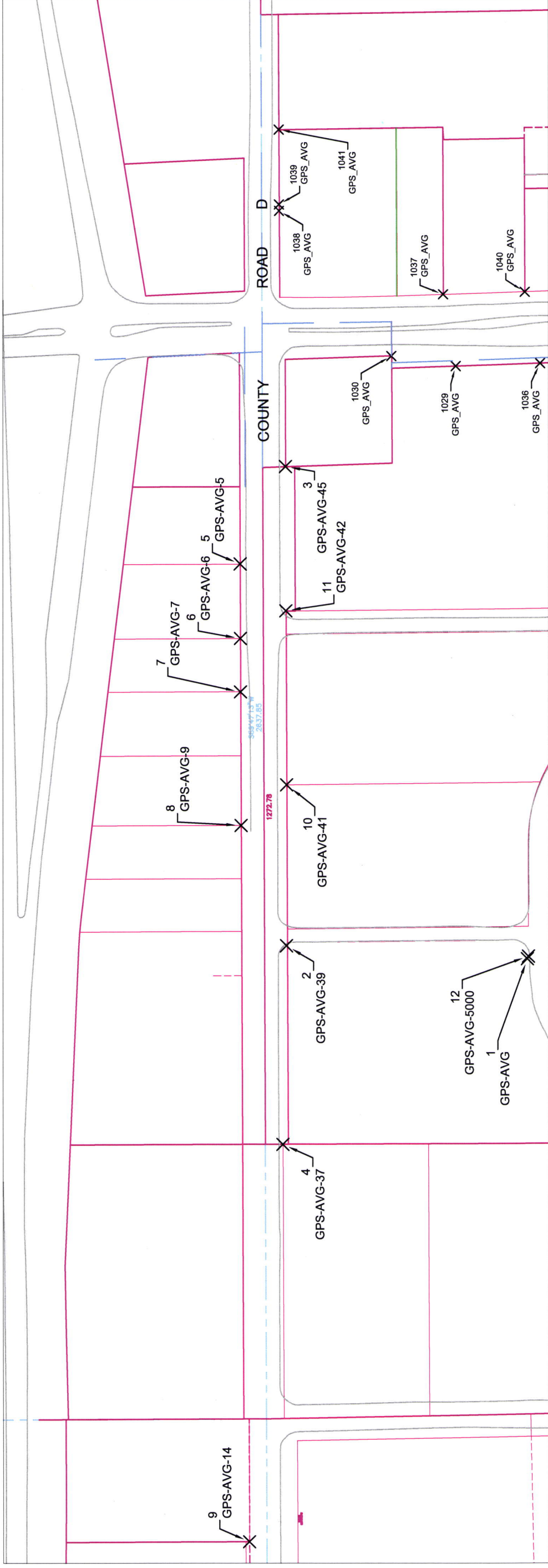


RIGHT-OF-WAY MONUMENTS ON COUNTY ROAD D



0 200
1 inch = 200 feet

Ramsey County Coordinate System
NAD83 (1986 adj.)

FDIP = 1/2 in. open I.P.

Field located with RTK GPS on
December 1, 4 and 7, 2009. Base Station
at Ramsey County Benchmark No. 9116.

GMG - RMW

Data files location:
X:\Survey\29\22\COUNTY ROAD D -FIELD

Monument ID	Coordinates	Status/Notes
1	188926.776 593358.995 928.153	GPS-AVG
2	189378.818 593382.742 932.466	GPS-AVG-39
3	189380.743 594282.448 941.361	GPS-AVG-45
4	189386.056 593008.357 924.962	GPS-AVG-37
5	189465.905 594099.452 938.844	GPS-AVG-5
6	189465.425 593959.421 937.944	GPS-AVG-6

Monument ID	Coordinates	Status/Notes
7	189465.157 593859.212 937.582	GPS-AVG-7
8	189464.162 593609.4 935.63	GPS-AVG-9
9	189449.19 592260.735 933.743	GPS-AVG-14
10	189378.618 593685.569 937.331	GPS-AVG-41
11	189379.851 594011.491 938.116	GPS-AVG-42
12	188924.778 593363.757 927.869	GPS-AVG-5000



Note: See White Bear Avenue Right of Way Monuments worksheet for coordinates for corners numbered 1,000 and up
SET REBAR CAPPED WITH PLASTIC CAP STAMPED RAMSEY COUNTY