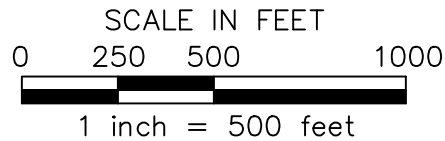
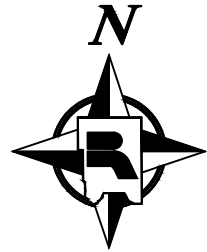
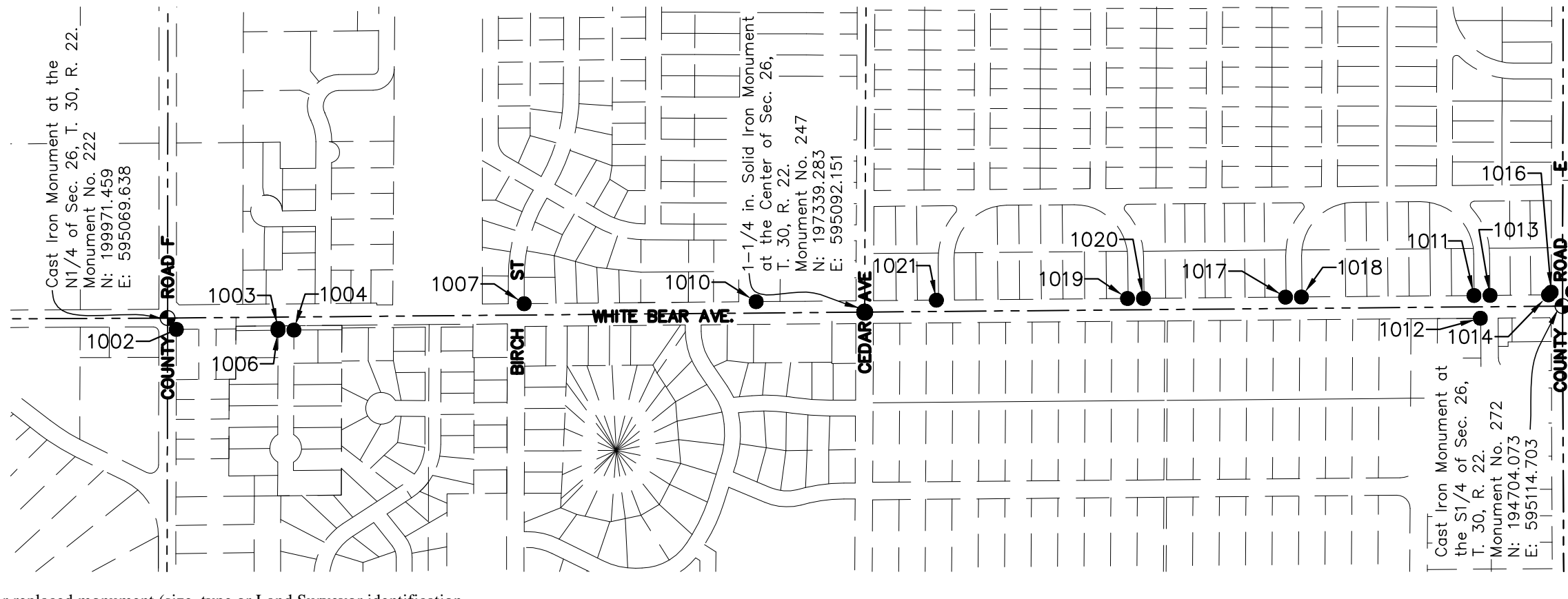


# SURVEY MONUMENT REPLACEMENT EXHIBIT - WHITE BEAR AVENUE -HIGHWAY 694 TO COUNTY ROAD F-



### LEGEND

- Denotes found or replaced monument (size, type or Land Surveyor identification described in chart).
- ⊕ Denotes Ramsey County cast iron monument.



MATCH LINE  
SEE SHEET 2 OF 2 SHEETS

### NOTES

This exhibit shows the monumentation found at or near the existing right of way prior to the concrete rehabilitation of White Bear Avenue and the intersections contained within. This exhibit shows the results of a detailed monument search performed by the Ramsey County Surveyor's Office.

The coordinate and bearing basis for all the information shown hereon is based on the Ramsey County Coordinate System, NAD83 (1986 adj.).

The Center of Sec. 26, T. 30, R. 22 (Mon. 247)      The E1/4 Corner of Sec. 26, T. 30, R. 22 (Mon. 248)  
N: 197339.283      N: 197327.760  
E: 595092.151      E: 597734.219

The Center of Sec. 35, T. 30, R. 22 (Mon. 297)      The E1/4 Corner of Sec. 35, T. 30, R. 22 (Mon. 298)  
N: 192062.183      N: 192066.776  
E: 595121.964      E: 597760.611

Monuments were located using VRS GPS with a Trimble R8 GNSS antenna. The project was site calibrated on 4-6-2012. It is calibrated horizontally to Ramsey County Monument Nos. 247, 248, 297 and 298. The location of each monument was observed 4 times during two separate sessions. The average of the observations is shown in the chart contained hereon.

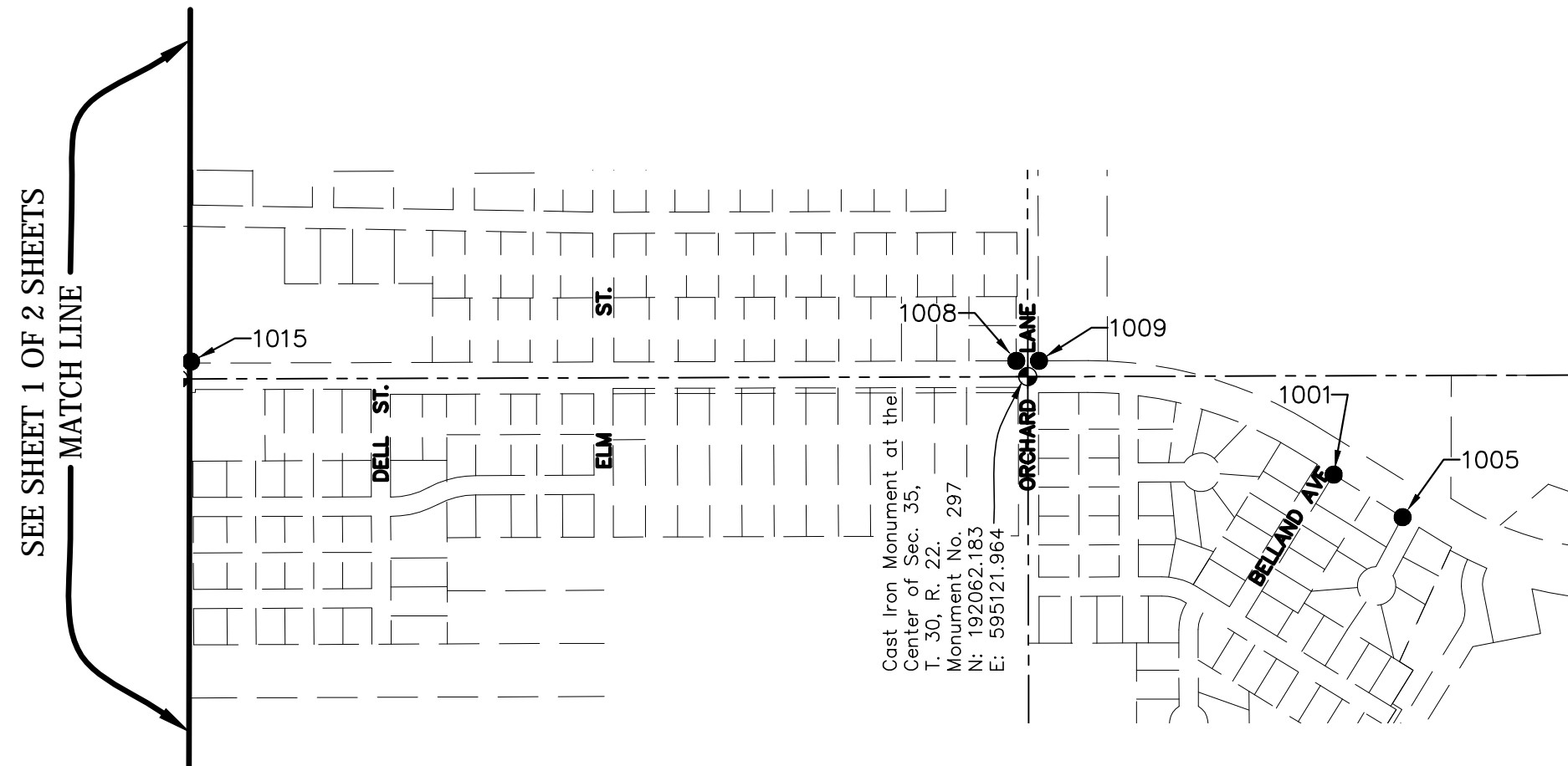
Pre-reconstruction				Post-reconstruction		
Point No.	Northing	Easting	Description of Monument Found	Date Found	Found in Place/Reset*	Date Found/Reset
1002	199938.51	595026.79	Found 1/2" Rebar	4/6/2012	Set*	6/11/2012
1003	199554.52	595030.71	Found pinch top iron pipe	4/6/2012	Found in Place	6/11/2012
1004	199494.71	595024.21	Found 1/2" iron pipe marked with lic. no. 12002	4/6/2012	Found in Place	6/11/2012
1006	199554.56	595023.63	Found 1/2" iron pipe marked with lic. no. 12002	4/6/2012	Found in Place	6/11/2012
1007	198625.37	595123.83	Found 1/2" open iron pipe - bent	4/6/2012	Found in Place	6/11/2012
1010	197749.06	595131.58	Found 1" open iron pipe	4/6/2012	Found in Place	6/11/2012
1011	195038.43	595154.85	Found 1/2" iron pipe marked with lic. no. 17551	4/6/2012	Found in Place	6/11/2012
1012	195014.29	595068.92	Found 1/2" iron pipe marked with lic. no. 8612	4/6/2012	Found in Place	6/11/2012
1013	194977.87	595155.26	Found 1/2" iron pipe marked with lic. no. 9018	4/6/2012	Found in Place	6/11/2012
1014	194756.94	595157.21	Found 1/2" open iron pipe (located East edge)	4/6/2012	Found in Place	6/11/2012
1016	194746.87	595167.21	Found 1/2" iron pipe marked with lic. no. 9808	4/6/2012	Found in Place	6/11/2012
1017	195750.08	595148.71	Found pinch top iron pipe	4/6/2012	Found in Place	6/11/2012
1018	195690.20	595149.13	Found pinch top iron pipe	4/6/2012	Found in Place	6/11/2012
1019	196346.79	595143.63	Found pinch top iron pipe	4/6/2012	Found in Place	6/11/2012
1020	196286.70	595143.93	Found pinch top iron pipe	4/6/2012	Found in Place	6/11/2012
1021	197068.47	595137.28	Found 1/2" open iron pipe	4/6/2012	Found in Place	6/11/2012

\*Set a 5/8 in. by 14 in. rebar with a plastic cap embossed "Ramsey County 45816"

**RAMSEY COUNTY SURVEYOR'S OFFICE**  
**DEPARTMENT OF PUBLIC WORKS**  
 1425 PAUL KIRKWOLD DRIVE  
 ARDEN HILLS, MN 55112-3933  
 651-266-7100

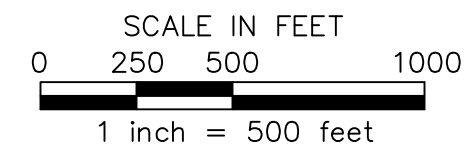


# SURVEY MONUMENT REPLACEMENT EXHIBIT - WHITE BEAR AVENUE -HIGHWAY 694 TO COUNTY ROAD F-



Point No.	Pre-reconstruction			Date Found	Post-reconstruction	
	Northing	Easting	Description of Monument Found		Found in Place/Reset*	Date Found/Reset
1001	191110.33	594817.09	Found pinch top iron pipe	4/6/2012	Found in Place	6/11/2012
1005	190895.94	594684.70	Found pinch top iron pipe	4/6/2012	Found in Place	6/11/2012
1008	192098.04	595171.26	Found 1/2" iron pipe marked with lic. no. 10459	4/6/2012	Found in Place	6/11/2012
1009	192027.24	595171.41	Found 1/2" iron pipe marked with lic. no. 25718	4/6/2012	Set*	6/11/2012
1015	194665.92	595169.33	Found 1/2" iron pipe marked with lic. no. 9808	4/6/2012	Set*	6/11/2012

\*Set a 5/8 in. by 14 in. rebar with a plastic cap embossed "Ramsey County 45816"



## LEGEND

- Denotes found or replaced monument (size, type or Land Surveyor identification described in chart).
- ⊕ Denotes Ramsey County cast iron monument.

**RAMSEY COUNTY SURVEYOR'S OFFICE**  
**DEPARTMENT OF PUBLIC WORKS**  
 1425 PAUL KIRKWOLD DRIVE  
 ARDEN HILLS, MN 55112-3933  
 651-266-7100

