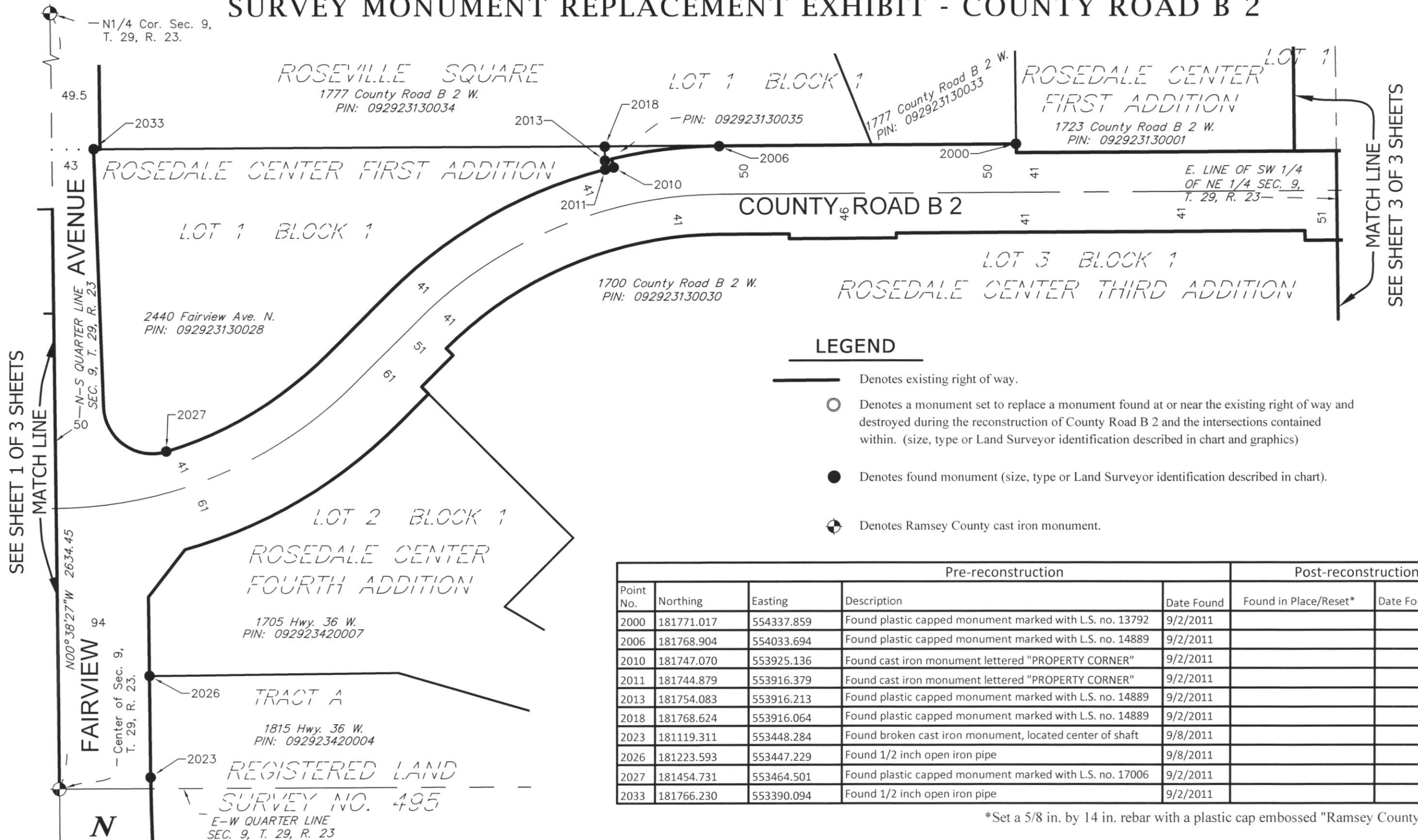


SURVEY MONUMENT REPLACEMENT EXHIBIT - COUNTY ROAD B 2

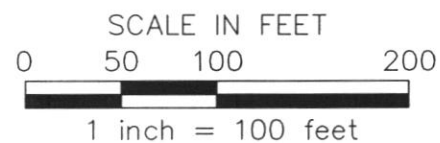


LEGEND

- Denotes existing right of way.
- Denotes a monument set to replace a monument found at or near the existing right of way and destroyed during the reconstruction of County Road B 2 and the intersections contained within. (size, type or Land Surveyor identification described in chart and graphics)
- Denotes found monument (size, type or Land Surveyor identification described in chart).
- Denotes Ramsey County cast iron monument.

Point No.	Pre-reconstruction				Post-reconstruction	
	Northing	Easting	Description	Date Found	Found in Place/Reset*	Date Found/Reset
2000	181771.017	554337.859	Found plastic capped monument marked with L.S. no. 13792	9/2/2011		
2006	181768.904	554033.694	Found plastic capped monument marked with L.S. no. 14889	9/2/2011		
2010	181747.070	553925.136	Found cast iron monument lettered "PROPERTY CORNER"	9/2/2011		
2011	181744.879	553916.379	Found cast iron monument lettered "PROPERTY CORNER"	9/2/2011		
2013	181754.083	553916.213	Found plastic capped monument marked with L.S. no. 14889	9/2/2011		
2018	181768.624	553916.064	Found plastic capped monument marked with L.S. no. 14889	9/2/2011		
2023	181119.311	553448.284	Found broken cast iron monument, located center of shaft	9/8/2011		
2026	181223.593	553447.229	Found 1/2 inch open iron pipe	9/8/2011		
2027	181454.731	553464.501	Found plastic capped monument marked with L.S. no. 17006	9/2/2011		
2033	181766.230	553390.094	Found 1/2 inch open iron pipe	9/2/2011		

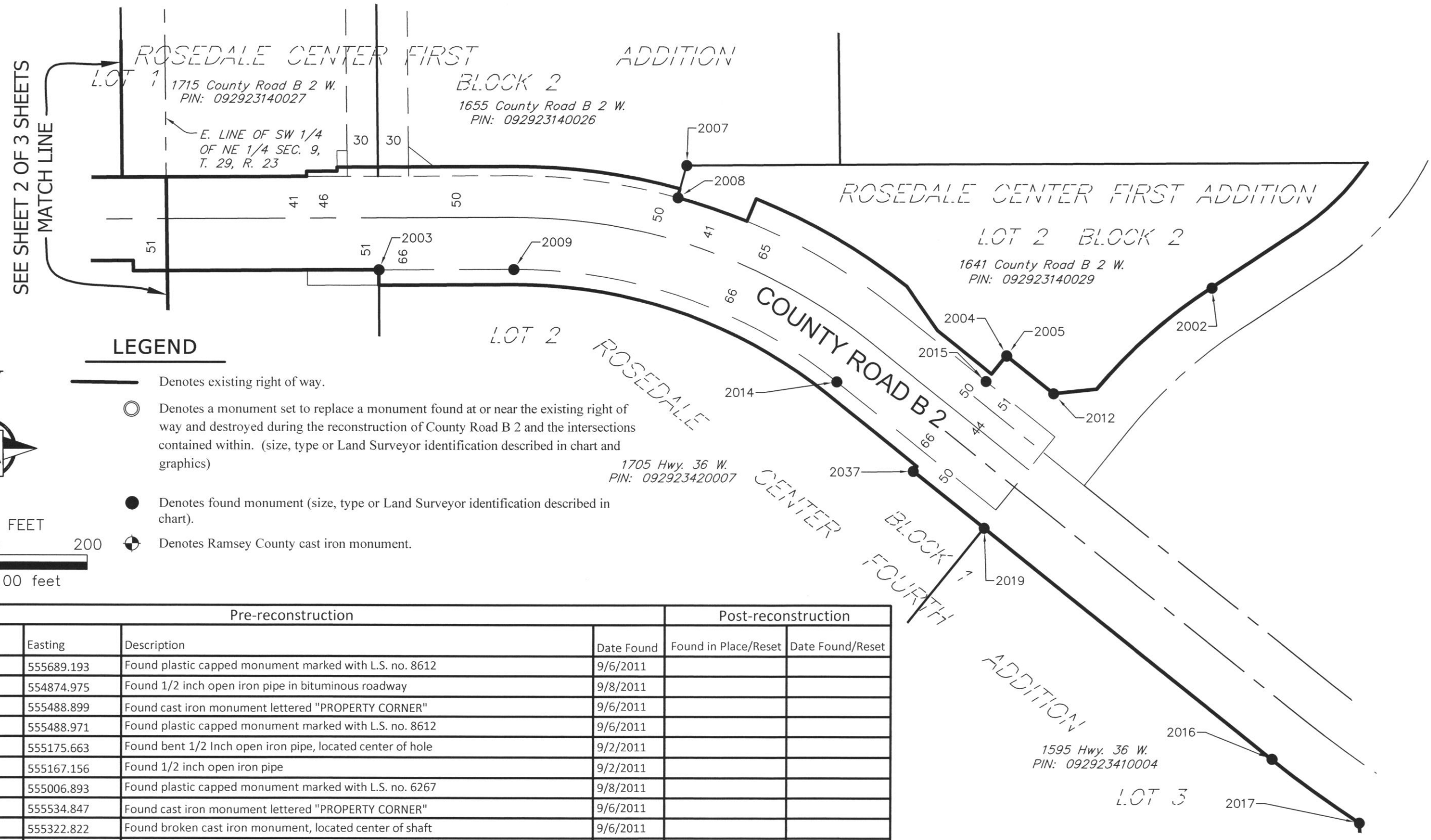
*Set a 5/8 in. by 14 in. rebar with a plastic cap embossed "Ramsey County 45816"



RAMSEY COUNTY SURVEYOR'S OFFICE
 DEPARTMENT OF PUBLIC WORKS
 1425 PAUL KIRKWOLD DRIVE
 ARDEN HILLS, MN 55112-3933
 651-266-7100



SURVEY MONUMENT REPLACEMENT EXHIBIT - COUNTY ROAD B 2



LEGEND

- Denotes existing right of way.
- Denotes a monument set to replace a monument found at or near the existing right of way and destroyed during the reconstruction of County Road B 2 and the intersections contained within. (size, type or Land Surveyor identification described in chart and graphics)
- Denotes found monument (size, type or Land Surveyor identification described in chart).
- Denotes Ramsey County cast iron monument.



SCALE IN FEET
 0 50 100 200
 1 inch = 100 feet

Point No.	Pre-reconstruction			Post-reconstruction		
	Northing	Easting	Description	Date Found	Found in Place/Reset	Date Found/Reset
2002	181656.342	555689.193	Found plastic capped monument marked with L.S. no. 8612	9/6/2011		
2003	181672.818	554874.975	Found 1/2 inch open iron pipe in bituminous roadway	9/8/2011		
2004	181589.263	555488.899	Found cast iron monument lettered "PROPERTY CORNER"	9/6/2011		
2005	181588.936	555488.971	Found plastic capped monument marked with L.S. no. 8612	9/6/2011		
2007	181775.618	555175.663	Found bent 1/2 Inch open iron pipe, located center of hole	9/2/2011		
2008	181744.087	555167.156	Found 1/2 inch open iron pipe	9/2/2011		
2009	181673.402	555006.893	Found plastic capped monument marked with L.S. no. 6267	9/8/2011		
2012	181552.245	555534.847	Found cast iron monument lettered "PROPERTY CORNER"	9/6/2011		
2014	181563.399	555322.822	Found broken cast iron monument, located center of shaft	9/6/2011		
2015	181564.063	555468.737	Found plastic capped monument marked with L.S. no. 8612, bent, located center of hole	9/6/2011		
2016	181194.386	555749.552	Found cast iron monument lettered "PROPERTY CORNER"	9/6/2011		
2017	181132.066	555835.260	Found cast iron monument lettered "PROPERTY CORNER"	9/6/2011		
2019	181420.351	555467.362	Found plastic capped monument marked with L.S. no. 14945	9/6/2011		
2037	181475.990	555397.864	Found 1/2 inch open iron pipe	9/6/2011		

*Set a 5/8 in. by 14 in. rebar with a plastic cap embossed "Ramsey County 45816"

RAMSEY COUNTY SURVEYOR'S OFFICE
 DEPARTMENT OF PUBLIC WORKS
 1425 PAUL KIRKWOLD DRIVE
 ARDEN HILLS, MN 55112-3933
 651-266-7100

