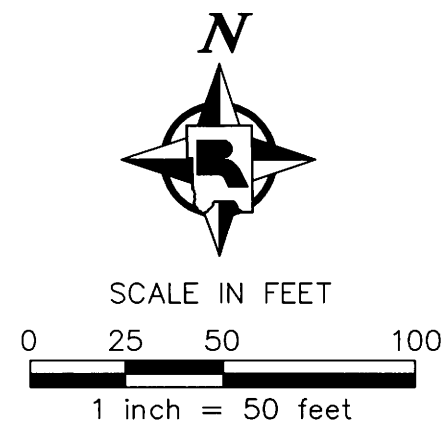


SURVEY MONUMENT REPLACEMENT EXHIBIT - MARYLAND AVENUE



LEGEND

- Denotes approximate existing right of way.
- Denotes a monument set to replace a monument found at or near the existing right of way and destroyed during the reconstruction of Maryland Avenue and the intersections contained within. (size, type or Land Surveyor identification described in chart and graphics)
- Denotes found monument (size, type or Land Surveyor identification described in chart).
- ⊕ Denotes Ramsey County cast iron monument.

NOTES

This exhibit shows the monumentation found at or near the existing right of way prior to the reconstruction of Maryland Avenue and the intersections contained within. This exhibit shows the results of a detailed monument search performed by the Ramsey County Surveyor's Office.

The coordinate and bearing basis for all the information shown hereon is based on the Ramsey County Coordinate System, NAD83 (1986 adj.).

The N1/4 Corner of Sec. 25, T. 29, R. 23 (Mon. 496)	The NE Corner of Sec. 25, T. 29, R. 23 (Mon. 497)
N: 168028.581	N: 168040.860
E: 569153.476	E: 571792.897

Monuments were located using VRS GPS with a Trimble R8 GNSS antenna. The project was site calibrated on 6-14-11. It is calibrated horizontally to Ramsey County Monument Nos. 475 and 497. It is calibrated horizontally and vertically to MNDOT PHALEN (NAVD88). The location of each monument was observed 4 times during two separate sessions. The average of the observations is shown in the chart contained hereon.

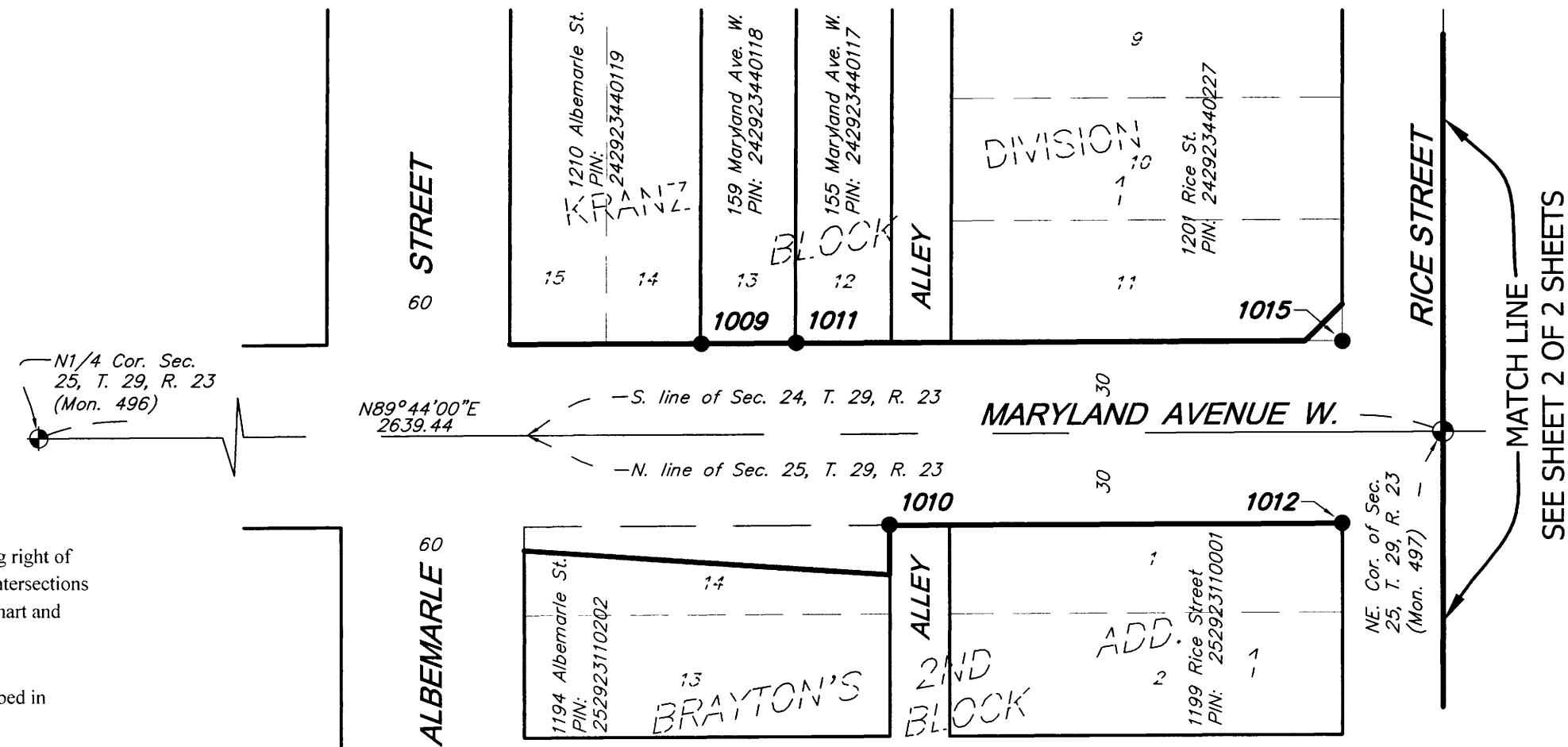
I hereby certify that this document was prepared by me or under my direct supervision and that I am a duly Licensed Land Surveyor under the laws of the State of Minnesota.

Daniel D. Baar 2-28-12
 Daniel D. Baar, L.S. Date
 Ramsey County Surveyor Rev. 11-8-12
 Minnesota License No. 45816

RAMSEY COUNTY SURVEYOR'S OFFICE
 DEPARTMENT OF PUBLIC WORKS
 1425 PAUL KIRKWOLD DRIVE
 ARDEN HILLS, MN 55112-3933
 651-266-7100



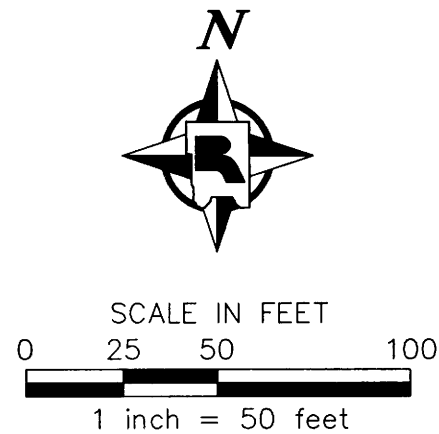
S:\29\23\25\Maryland Ave at Rice St\RiceMarylandMonExhibit.dwg



Point No.	Pre-reconstruction				Post-reconstruction	
	Northing	Easting	Description of Monument Found	Date Found	Found in Place/Reset*	Date Found/Reset
1009	168069.70	571550.25	Found 1/2 inch open iron pipe	6/14/2011	SET*	8/9/12
1010	168010.15	571611.25	Found 1 1/2 inch outer diameter open iron pipe	6/17/2011	SET*	8/9/12
1011	168070.02	571581.24	Found 1/2 inch open iron pipe	6/14/2011	SET*	8/9/12
1012	168010.77	571759.83	Found 1 inch solid pin	6/14/2011	SET*	8/9/12
1015	168070.61	571760.07	Found Mag Nail in concrete curb	6/14/2011	NOT FOUND/NOT SET	—

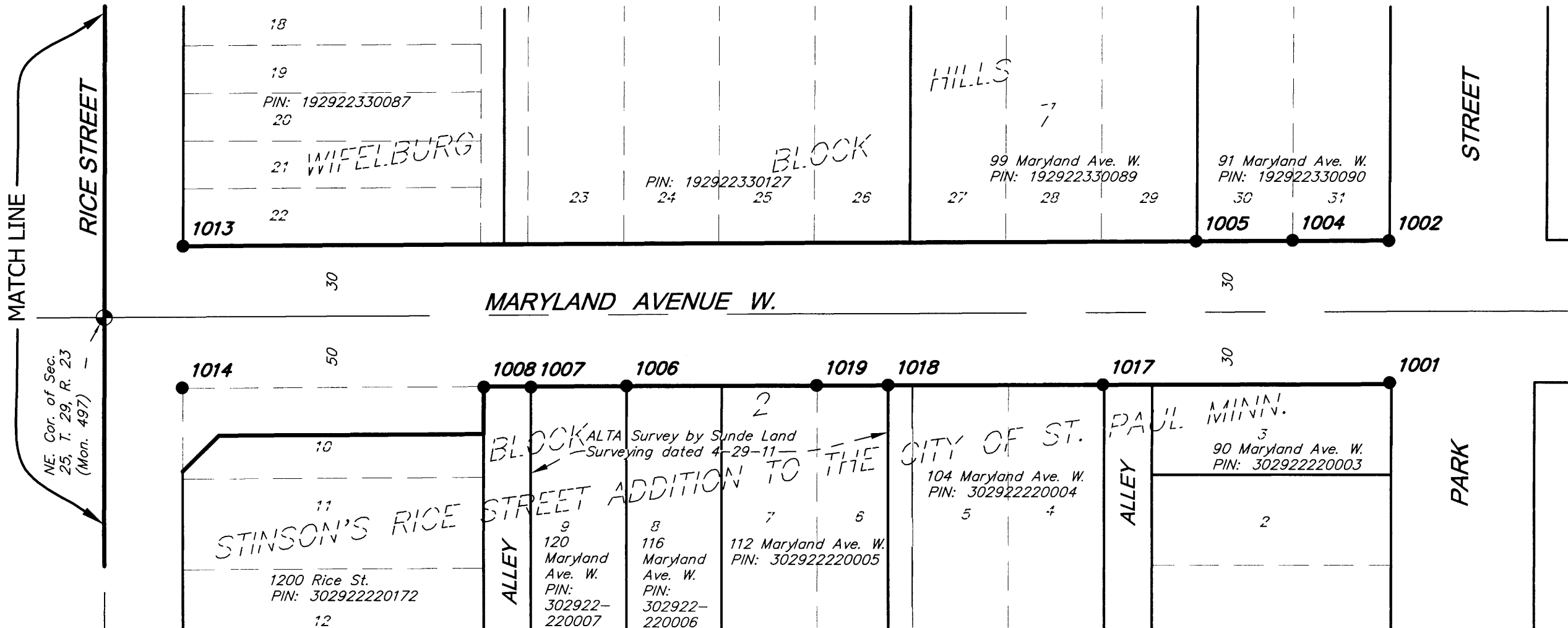
*Set a 5/8 in. by 14 in. rebar with a plastic cap embossed "Ramsey County 45816"

SURVEY MONUMENT REPLACEMENT EXHIBIT - MARYLAND AVENUE



SEE SHEET 1 OF 2 SHEETS

MATCH LINE



Point No.	Pre-reconstruction			Post-reconstruction	
	Northing	Easting	Description of Monument Found	Date Found	Found in Place/Reset* Date Found/Reset
1001	168013.57	572331.63	Found 8 inch by 8 inch granite monument	6/14/2011	FOUND IN PLACE 8/8/12
1002	168073.43	572331.13	Found 1-1/2 inch iron pipe under concrete sidewalk	6/17/2011	SET * 8/8/12
1004	168073.53	572290.93	Found 1 inch solid iron pin	6/14/2011	FOUND IN PLACE 8/8/12
1005	168073.14	572250.64	Found plastic capped monument marked with L.S. no. 14887	6/14/2011	FOUND ** 8/8/12
1006	168011.95	572012.30	Found 1/2 inch open iron pipe	6/14/2011	SET * 8/9/12
1007	168011.48	571972.41	Found 5/8 inch solid iron pin	6/14/2011	SET * 8/9/12
1008	168011.49	571952.39	Found 1/2 inch open iron pipe	6/14/2011	SET * 8/9/12
1013	168070.98	571825.94	Found 1/2 inch open iron pipe	6/14/2011	SET * 8/8/12
1014	168011.25	571825.61	Found stone block corner monument	6/14/2011	FOUND C.I.M. 8/9/12
1017	168012.62	572211.77	Found 1/2 inch open iron pipe	6/14/2011	SET * 8/9/12
1018	168012.35	572122.02	Found plastic capped monument marked with L.S. no. 15480	6/14/2011	SET * 8/9/12
1019	168012.21	572092.19	Found plastic capped monument marked with L.S. no. 15480	6/14/2011	SET * 8/9/12

LEGEND

- Denotes approximate existing right of way.
- Denotes a monument set to replace a monument found at or near the existing right of way and destroyed during the reconstruction of Maryland Avenue and the intersections contained within. (size, type or Land Surveyor identification described in chart and graphics)
- Denotes found monument (size, type or Land Surveyor identification described in chart).
- Denotes Ramsey County cast iron monument.

*Set a 5/8 in. by 14 in. rebar with a plastic cap embossed "Ramsey County 45816"

**** FOUND 1/2 IN. OPEN IRON PIPE 0.4 FT. NORTH OF LOCATION OF MONUMENT WITH LIC. NO. 14887. DID NOT FIND MONUMENT WITH LIC. NO. 14887; DID NOT RESET.**

RAMSEY COUNTY SURVEYOR'S OFFICE
 DEPARTMENT OF PUBLIC WORKS
 1425 PAUL KIRKWOLD DRIVE
 ARDEN HILLS, MN 55112-3933
 651-266-7100

