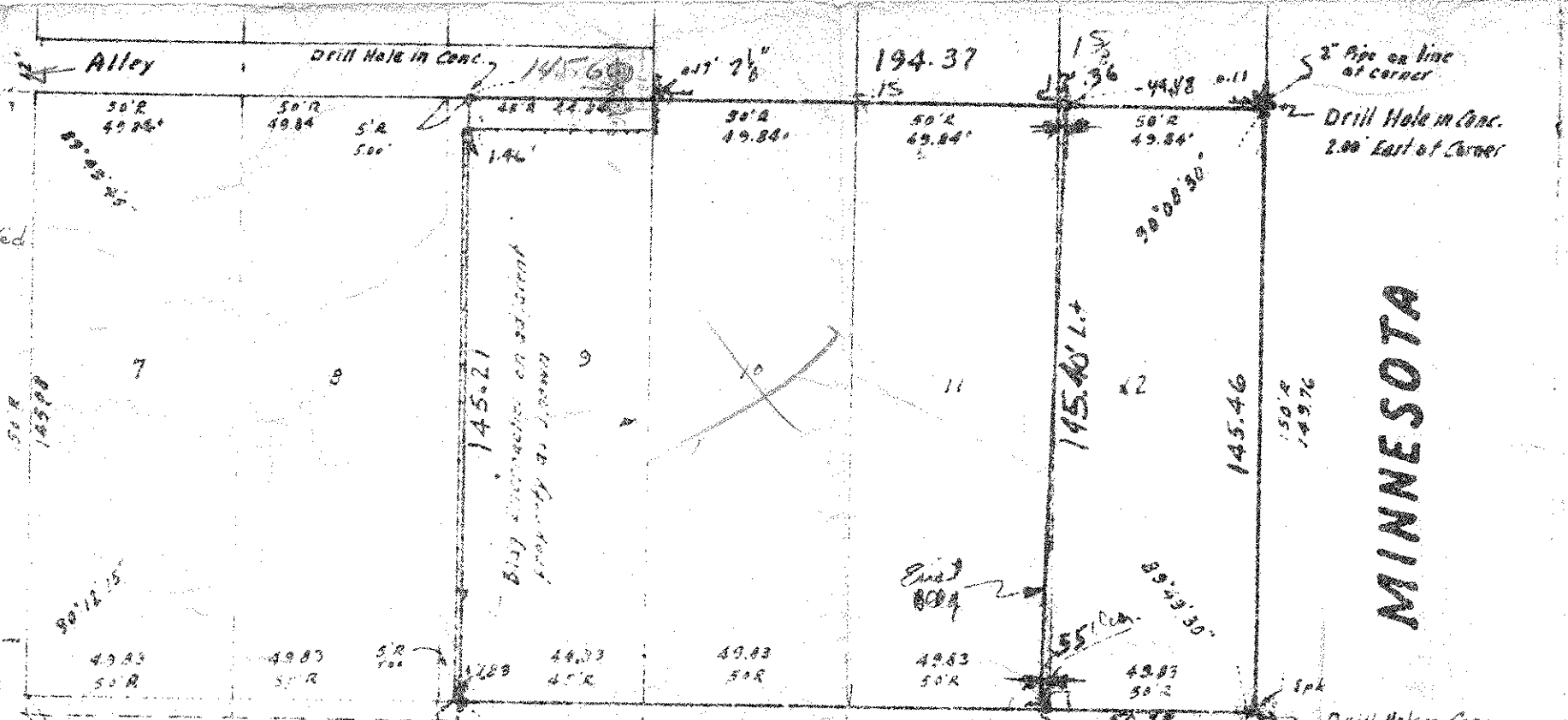


144.20
 2 Alley
 To 4th
 Pl Cedar
 to a.B. as staked
 145.6

CEDAR



E. KELLOGG

BLVD.

MINNESOTA

Note
 Abstract on lot 2 shows 144.4' to 144.5' legal clarification needed before final plat on said lot.
 Equal area may be made on other lots as shown.

146.8
 148.3
 145.8

*