

# CERTIFICATE OF SURVEY

N1=9,970.0000  
E1=199,781.6730

S 90.0000 E  
HD=212.5760

N2=9,970.0000  
E2=199,994.2490

N 12.2726 E  
HD=30.7300

N3=10,000.0065  
E3=200,000.0778

N 12.2827 E  
HD=30.7300

N4=10,030.0111  
E4=200,007.5150

S 12.2618 W  
HD=0.0114

N5=10,030.0000  
E5=200,007.5130

N 10.4358 E  
HD=86.5206

N6=10,115.0149  
E6=200,023.6278

N 80.3903 W  
HD=202.1533

N7=10,147.8550  
E7=199,824.1590

N 72.0930 W  
HD=101.7950

N8=10,179.0386  
E8=199,727.2590

HD=24.2459

N9=10,176.0045  
E9=199,783.0310

S 12.1931 W  
HD=150.0632

N10=10,030.0000  
E10=199,671.0025

SS  
S 12.1933 W  
HD=4.2090

N11=10,025.0000  
E11=199,670.1000

TRAV  
SS  
S 90.0000 E  
HD=336.5100

N12=10,030.0000  
E12=200,007.5130

TRAV  
S 90.0000 E  
HD=142.0000

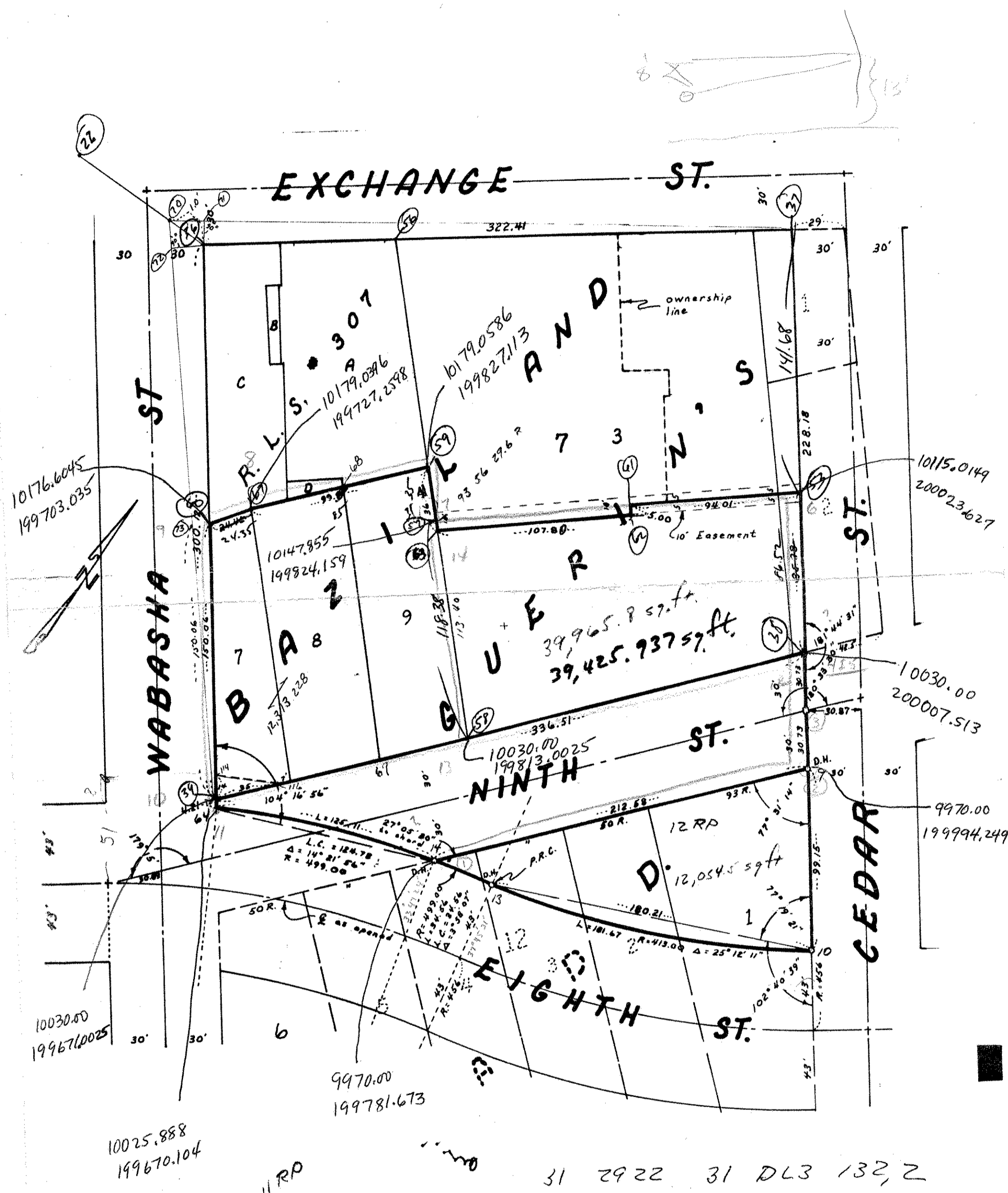
N13=10,030.0000  
E13=199,813.0025

N 5.2428 E  
HD=118.3819

N14=10,147.8550  
E14=199,824.1590

N 5.2429 E  
HD=31.3431

N15=10,179.0586  
E15=199,827.1130



NOTE: Distances & Angles shown are subject to slight adjustment

SEE D-1343-2  
DWG-1412 DR 5

31 2922 31 DL3 132, 2