

LOTS 1 TO 5 & 26 TO 30. BLK. 3.

BIRMINGHAM'S 2ND ADD.

JOHN B. IRVINE SUR.

ROOM 508 GLOBE BLDG

ST PAUL MINN

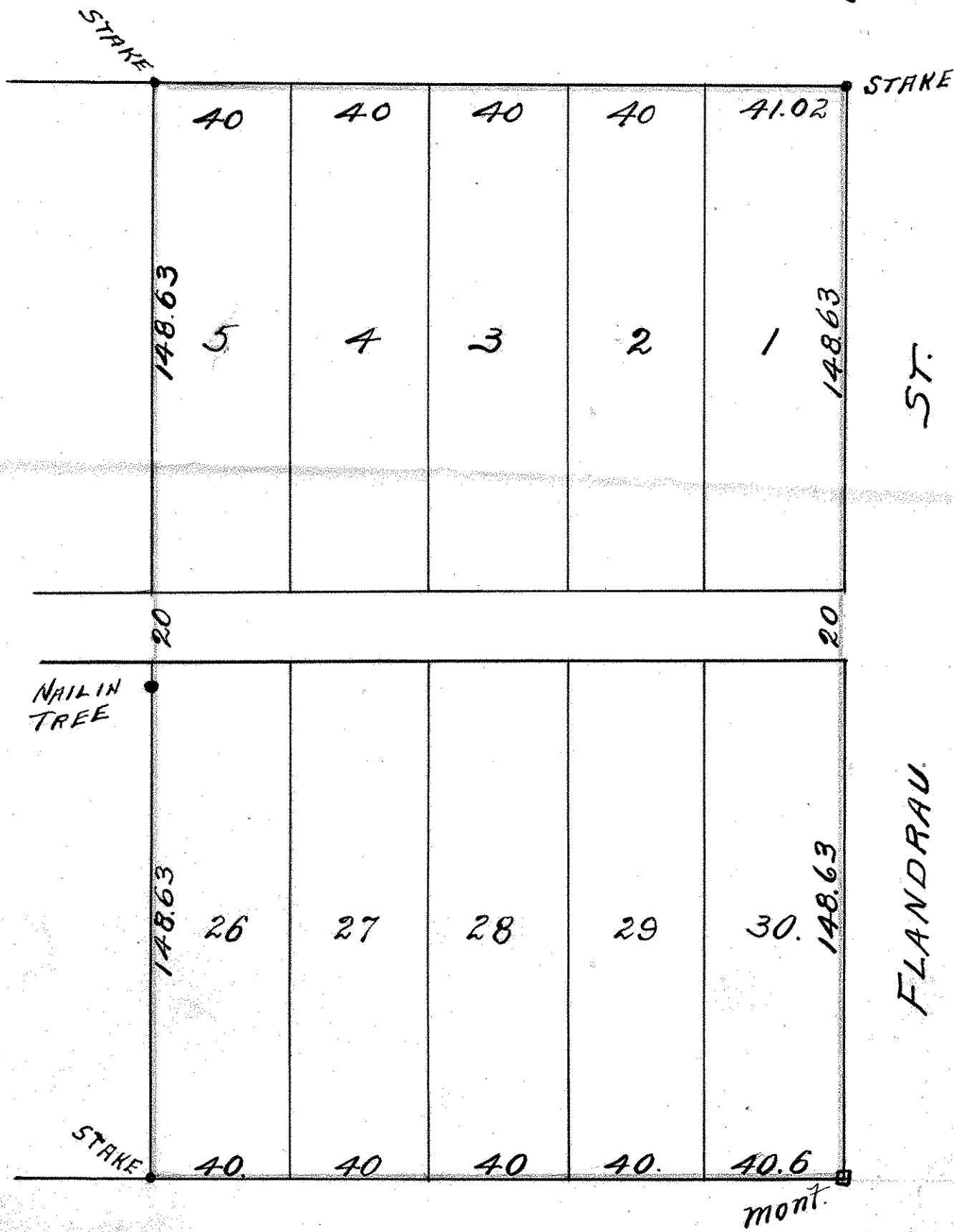
Mch. 28 - 05 Mont.

SCALE 40' = 1"

SCALE 40' = 1"

BRAND ST.

60.



KERWIN ST.

FLANDRAU ST.