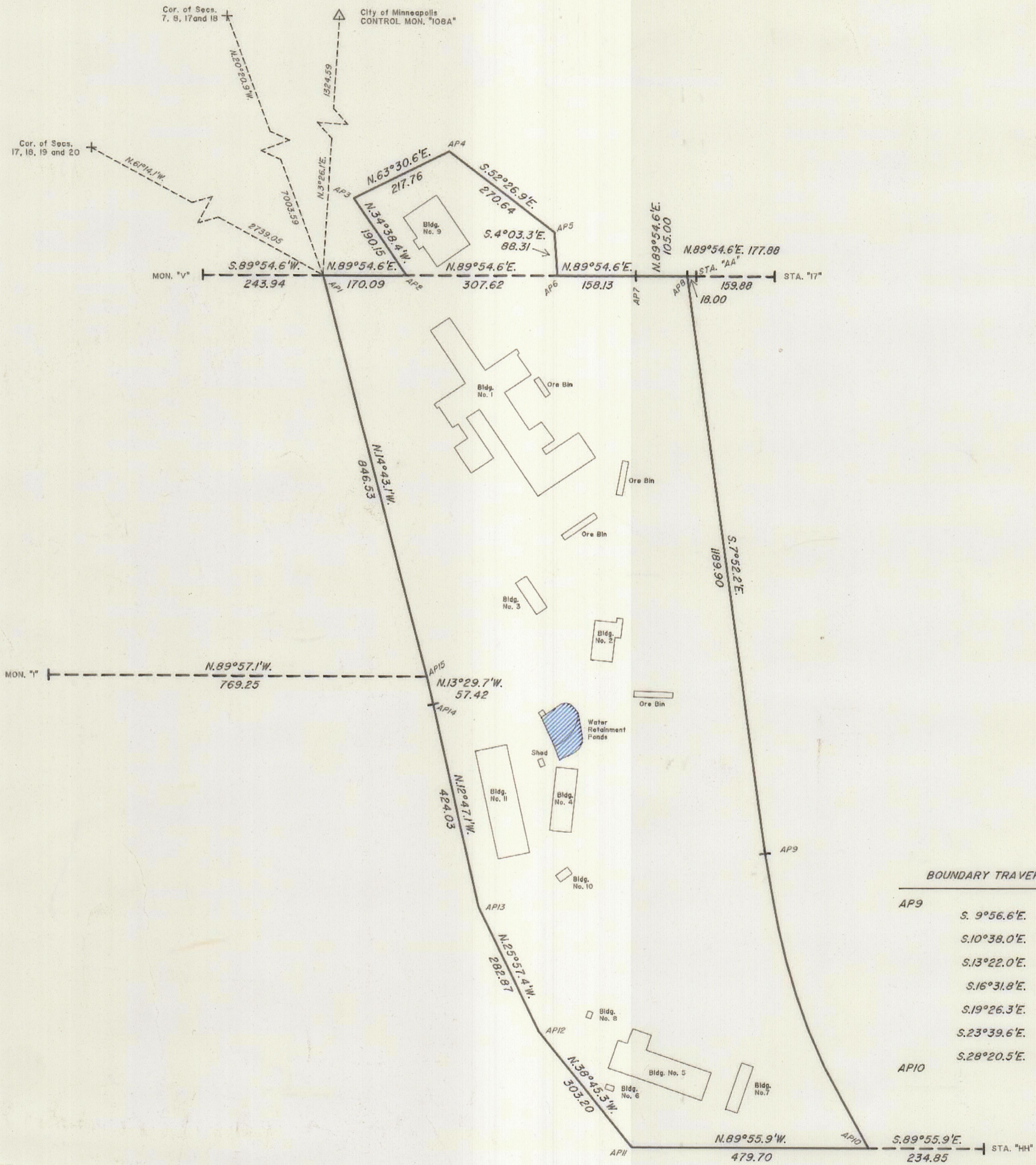


TOWNSHIP 28 NORTH, RANGE 23 WEST, OF THE FOURTH PRINCIPAL MERIDIAN, MINNESOTA.

DEPENDENT RESURVEY AND SURVEY

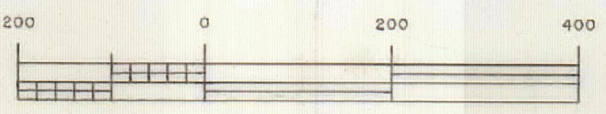
U.S. BUREAU OF MINES, TWIN CITIES RESEARCH CENTER, WITHIN THE FORT SNELLING MILITARY RESERVATION



BOUNDARY TRAVERSE

AP9	S. 9°56.6'E.	73.98
	S.10°38.0'E.	80.78
	S.13°22.0'E.	70.02
	S.16°31.8'E.	70.66
	S.19°26.3'E.	79.89
	S.23°39.6'E.	80.19
AP10	S.28°20.5'E.	187.62

Latitude: 44°53'48.82" N.
 Longitude: 93°11'38.48" W.
 "NAD 83"



Area Resurveyed and Surveyed: 27.32 ac.

STATE OF MINNESOTA
 DEPARTMENT OF STATE
 FILED
 FEB 19 1998
Jan Anderson Stone
 Secretary of State

A history of surveys is contained in the field note record.

This plat represents the dependent resurvey and survey of the U.S. Bureau of Mines, Twin Cities Research Center, located within the Fort Snelling Military Reservation, designed to restore the original corners in their true locations according to the best evidence in, Township 28 North, Range 23 West, Fourth Principal Meridian, Minnesota.

Survey executed by William H. Herbst, Cadastral Surveyor, beginning October 7, 1997 and completed October 28, 1997, pursuant to Special Instructions dated October 1, 1997, for Group No. 179, Minnesota.

Planimetric features shown hereon were derived from direct field ties, as they are for informational purposes only, said ties are not reported in the field note record.

UNITED STATES DEPARTMENT OF THE INTERIOR
 BUREAU OF LAND MANAGEMENT
 Springfield, Virginia December 5, 1997

This plat is strictly conformable to the approved field notes, and the survey, having been correctly executed in accordance with the requirements of law and the regulations of this Bureau, is hereby accepted.

For the Director
Joseph J. Kopas
 Chief Cadastral Surveyor
 Eastern States