

27 29-23

GOMSTOCK AND DAVIS INC.

3092 N. LEXINGTON AVE. ST. PAUL, MN. 55113 483-4408

SURVEYED FOR: Port Authority, City of St. Paul

DESCRIPTION: (Total-contains 127,979 sq.ft.)

Lot 4, Block 1, Energy Park No. 2. Ramsey County, Minnesota

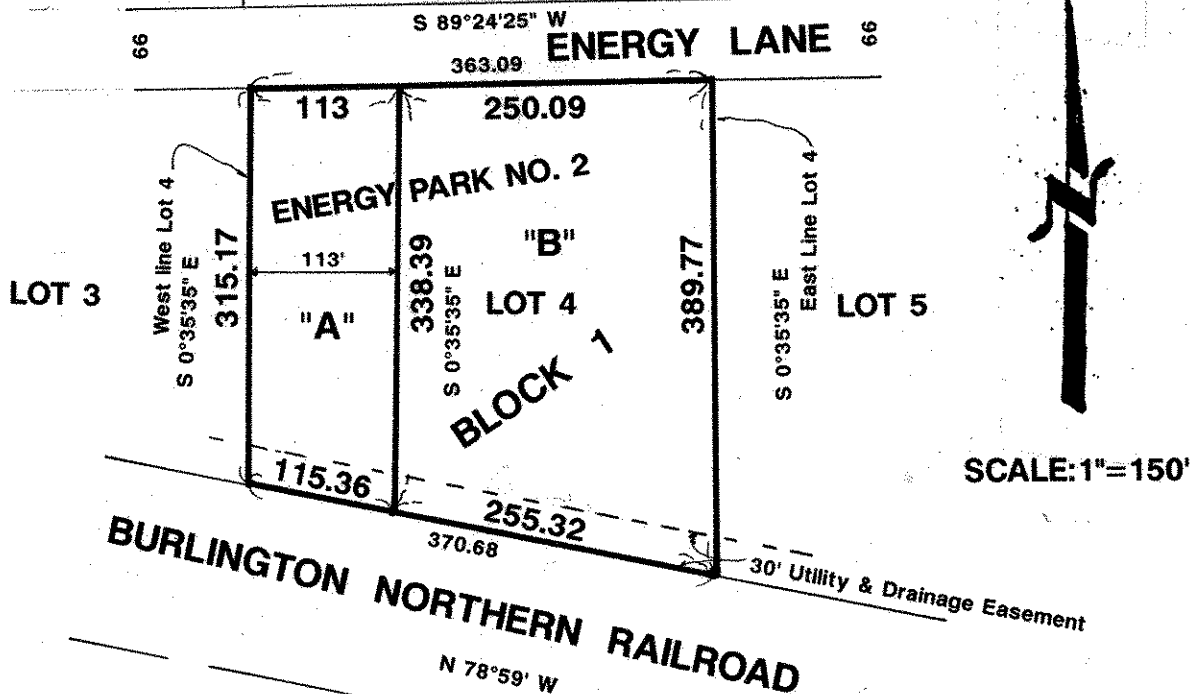
DESCRIPTION: (Parcel A-contains 36926 sq.ft.)

The West 113 feet, as measured at right angles to the West line, of Lot 4, Block 1, Energy Park No. 2. Ramsey County, Minnesota.

DESCRIPTION: (Parcel B-contains 91053 sq.ft.)

Lot 4, Block 1, Energy Park No. 2, except the West 113 feet thereof as measured at right angles to West line. Ramsey County, Minnesota

***Only easements as per final plat shown hereon.



I hereby certify that this survey, plan plat, preliminary plat or report was prepared by me or under my direct supervision and that I am a duly Registered Land Surveyor under the laws of the State of Minnesota.

Dwight Schmed

10459
Reg. No.

6/4/93
Date

931305
Job No.

Book No.