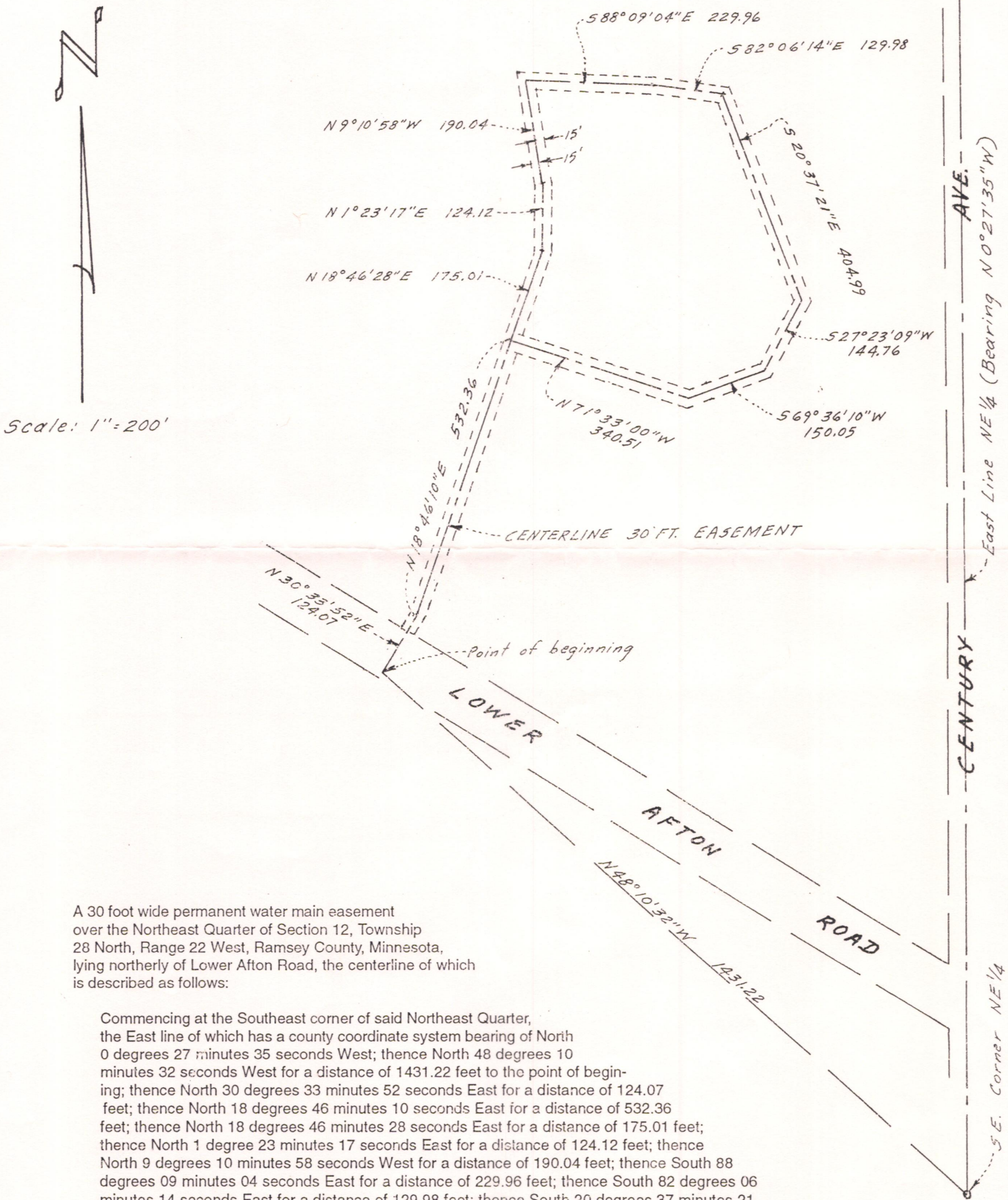


CERTIFICATE OF SURVEY

By
DEPARTMENT OF PUBLIC WORKS
OF RAMSEY COUNTY

I hereby certify that this survey was prepared by me and that I am a duly Registered Land Surveyor under the laws of the State of Minnesota.

Ronald F. Meyer Reg. No. 9051 Date: July 8, 1992



A 30 foot wide permanent water main easement over the Northeast Quarter of Section 12, Township 28 North, Range 22 West, Ramsey County, Minnesota, lying northerly of Lower Afton Road, the centerline of which is described as follows:

Commencing at the Southeast corner of said Northeast Quarter, the East line of which has a county coordinate system bearing of North 0 degrees 27 minutes 35 seconds West; thence North 48 degrees 10 minutes 32 seconds West for a distance of 1431.22 feet to the point of beginning; thence North 30 degrees 33 minutes 52 seconds East for a distance of 124.07 feet; thence North 18 degrees 46 minutes 10 seconds East for a distance of 532.36 feet; thence North 18 degrees 46 minutes 28 seconds East for a distance of 175.01 feet; thence North 1 degree 23 minutes 17 seconds East for a distance of 124.12 feet; thence North 9 degrees 10 minutes 58 seconds West for a distance of 190.04 feet; thence South 88 degrees 09 minutes 04 seconds East for a distance of 229.96 feet; thence South 82 degrees 06 minutes 14 seconds East for a distance of 129.98 feet; thence South 20 degrees 37 minutes 21 seconds East for a distance of 404.99 feet; thence South 27 degrees 23 minutes 09 seconds West for a distance of 144.76 feet; thence South 69 degrees 36 minutes 10 seconds West for a distance of 150.05 feet; thence North 71 degrees 33 minutes 00 seconds West for a distance of 340.51 feet being the centerline of said described easement and there terminating.